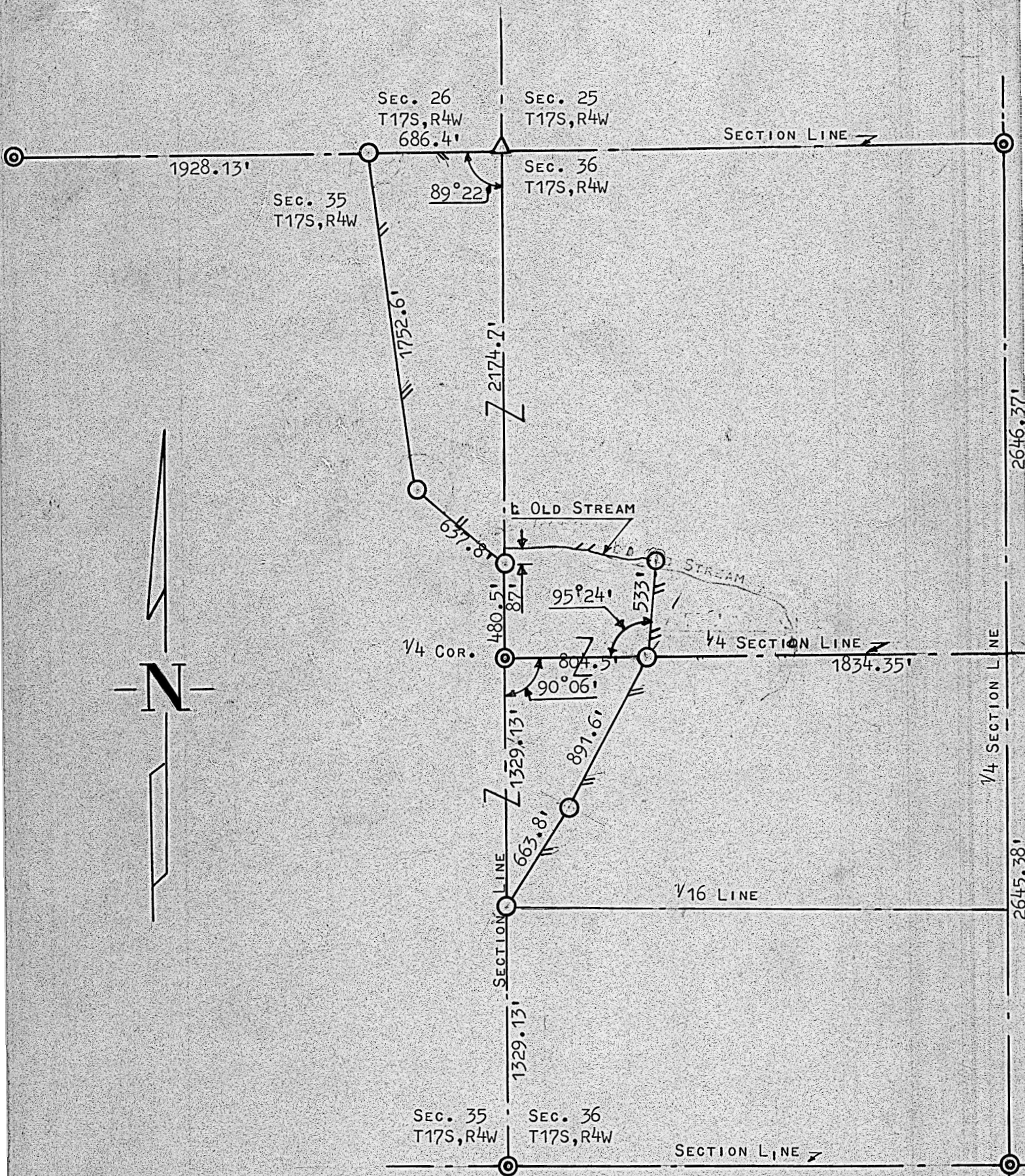


A SURVEY IN SECTIONS 35 & 36
T17S, R4W
CORRECTED PLAT



- △ STONE FOUND THIS SURVEY.
- ⊙ PINS SET U.S. GOV. SURVEY.
- PINS SET THIS SURVEY.

STATE OF KANSAS) SS
COUNTY OF McPHERSON)



I, FRANCIS D. WAGNER, COUNTY ENGINEER OF McPHERSON COUNTY, KANSAS, DO HEREBY CERTIFY THAT I DID CAUSE TO BE DONE ON THE 18TH DAY OF MAY, 1961, A SURVEY TO DETERMINE THE WEST BOUNDARY LINE, OF THE FARM KNOWN AS THE J. W. BEAN FARM, BETWEEN SECTION 35 AND 36, T17S, R4W OF THE 6TH P.M., AND THAT THE ACCOMPANYING PLAT IS A TRUE EXHIBIT OF SAID SURVEY.

Francis D. Wagner

FRANCIS D. WAGNER
COUNTY ENGINEER
McPHERSON COUNTY

MAY 25, 1961

Surveyed for C.N. Hoffman