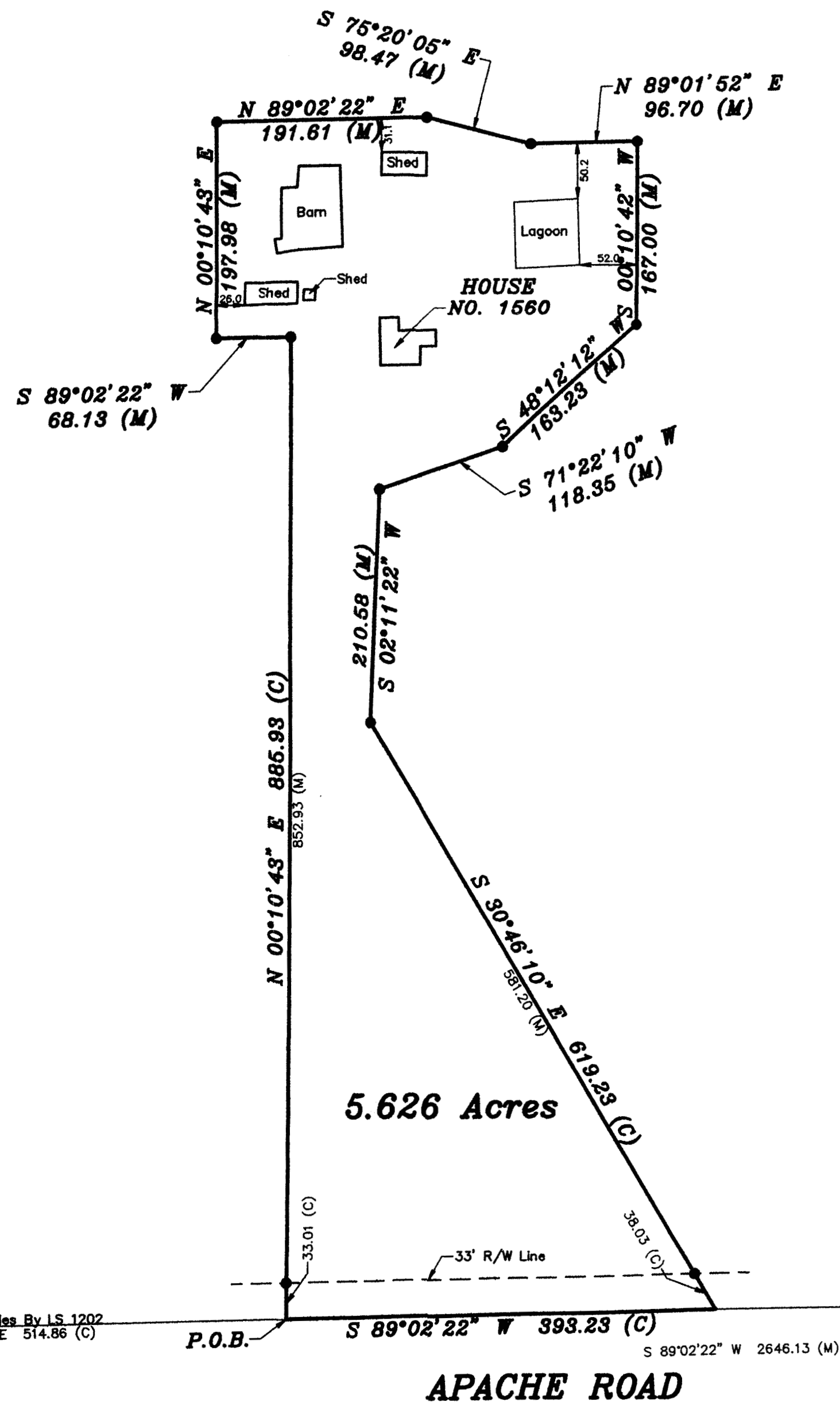


Save 9/28/2015 4:39:44 PM by KLOUTZEN
Plot Date & Time Tuesday, September 29, 2015 2:14:16 PM Dwg Path \\Fs2\company\LD\GSSFILES\2015\20150673 C3d\dwg\20150673 Auto S Grd



DESCRIPTION:

A portion of the Southeast Quarter of Section 34, Township 21 South, Range 3 West of the 6th Principal Meridian, McPherson County, Kansas described as follows:

Commencing at the Southwest corner of said Southeast Quarter; thence on a NAD 83 Kansas South Zone bearing of North 89°02'22" East on the South line of said Southeast Quarter a distance of 514.86 feet to the point of beginning; thence North 00°10'43" East a distance of 885.93 feet; thence South 89°02'22" West a distance of 68.13 feet; thence North 00°10'43" East a distance of 197.98 feet; thence North 89°02'22" East parallel with said South line a distance of 191.61 feet; thence South 75°20'05" East a distance of 98.47 feet; thence North 89°01'52" East a distance of 96.70 feet; thence South 00°10'42" West a distance of 167.00 feet; thence South 48°12'12" West a distance of 163.23 feet; thence South 71°22'10" West a distance of 118.35 feet; thence South 02°11'22" West a distance of 210.58 feet; thence South 30°46'10" East a distance of 619.23 feet to said South line; thence South 89°02'22" West on said South line a distance of 393.23 feet to the point of beginning.

Containing 5.626 Acres and subject to a road right of way easement across the South 33.00 feet thereof, and any other easements or restrictions of record.

SURVEYOR'S CERTIFICATE:

I hereby certify this plat to be a true, correct and complete representation of the property described hereon, as surveyed under my supervision, this 28th day of September, 2015



Prepared For:		Description:	
KALI GRABER		A PORTION OF THE SE 1/4 SECTION 34, T21S, R3W McPHERSON COUNTY, KANSAS	
Prepared By:		Garber Surveying Service, P.A.	
GSS		HUTCHINSON (Main Office) 2908 North Plum St. 67502 Ph. 620-665-7032 Fax 620-663-7401 McPHERSON (Branch Office) 115 East Martin 67460 Ph. 620-241-4441 Fax 620-241-4458 NEWTON (Branch Office) 511 North Poplar St. 67114 Ph. 316-283-5053 Fax 316-283-5073	
Drawn By:	KLL	Scale: 1"=100'	Date of Field Work: September 22, 2015
Checked By:	NDS	Date: 09/28/2015	Sheet 1 of 1 Sheet(s)
			Job No: G2015-673