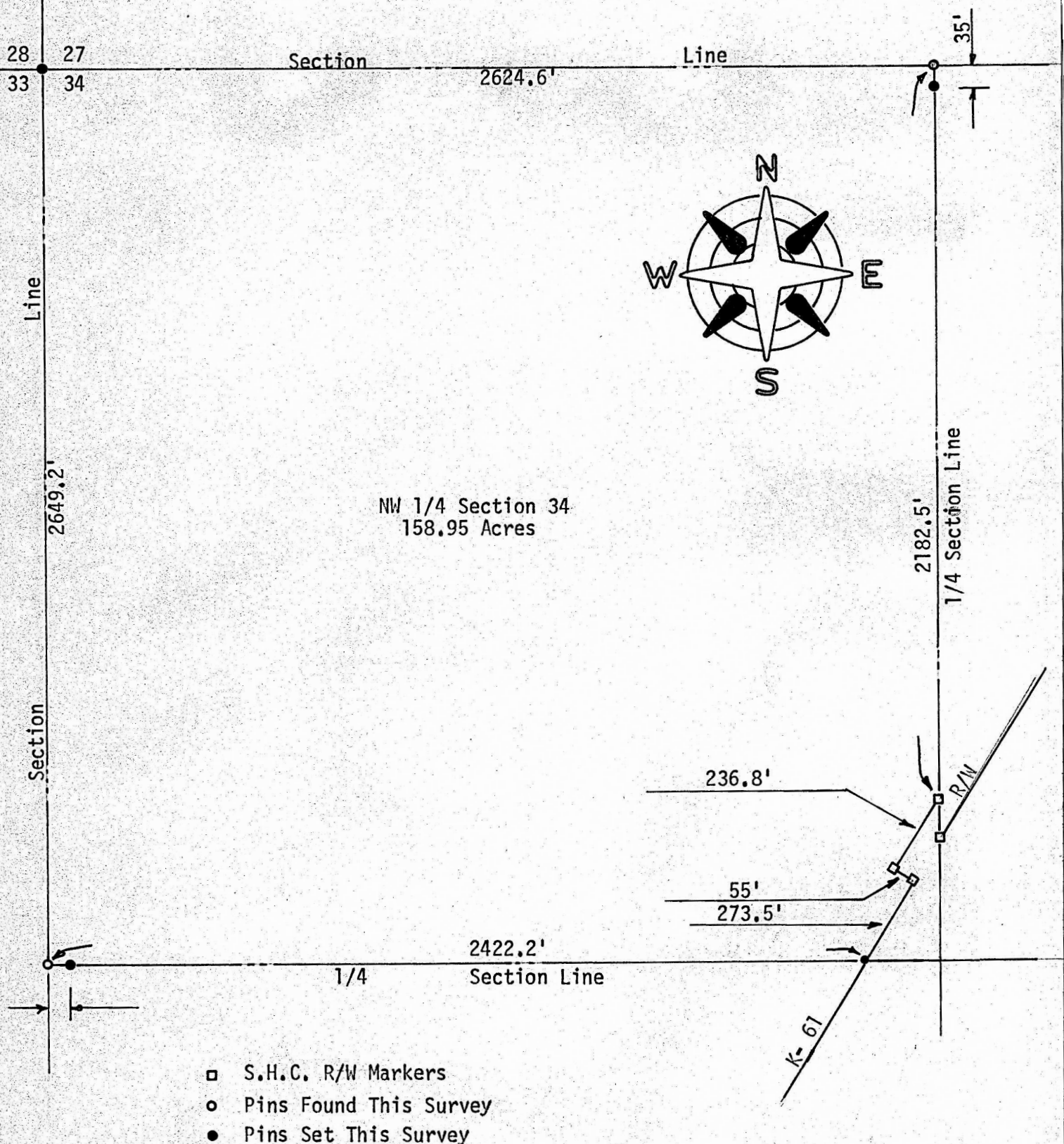


SURVEY OF THE NW 1/4
SECTION 34, T20S, R4W
MC PHERSON, KANSAS



State of Kansas)
County of McPherson) SS

I, F. R. Rankin, County Engineer of McPherson County, Kansas, do hereby certify that under my supervision a survey was made of the NW 1/4 Section 34, T20S, R4W of the 6th P.M. and the above plat is a true exhibit of said survey as far as it is known to me.

Survey requested by D. F. Neufeldt

Signed this 19 day of November, 1973

F. R. Rankin
F. R. Rankin, P. E.
Administrator of P.W. & County Engineer
McPherson County, Kansas



MICROFILM