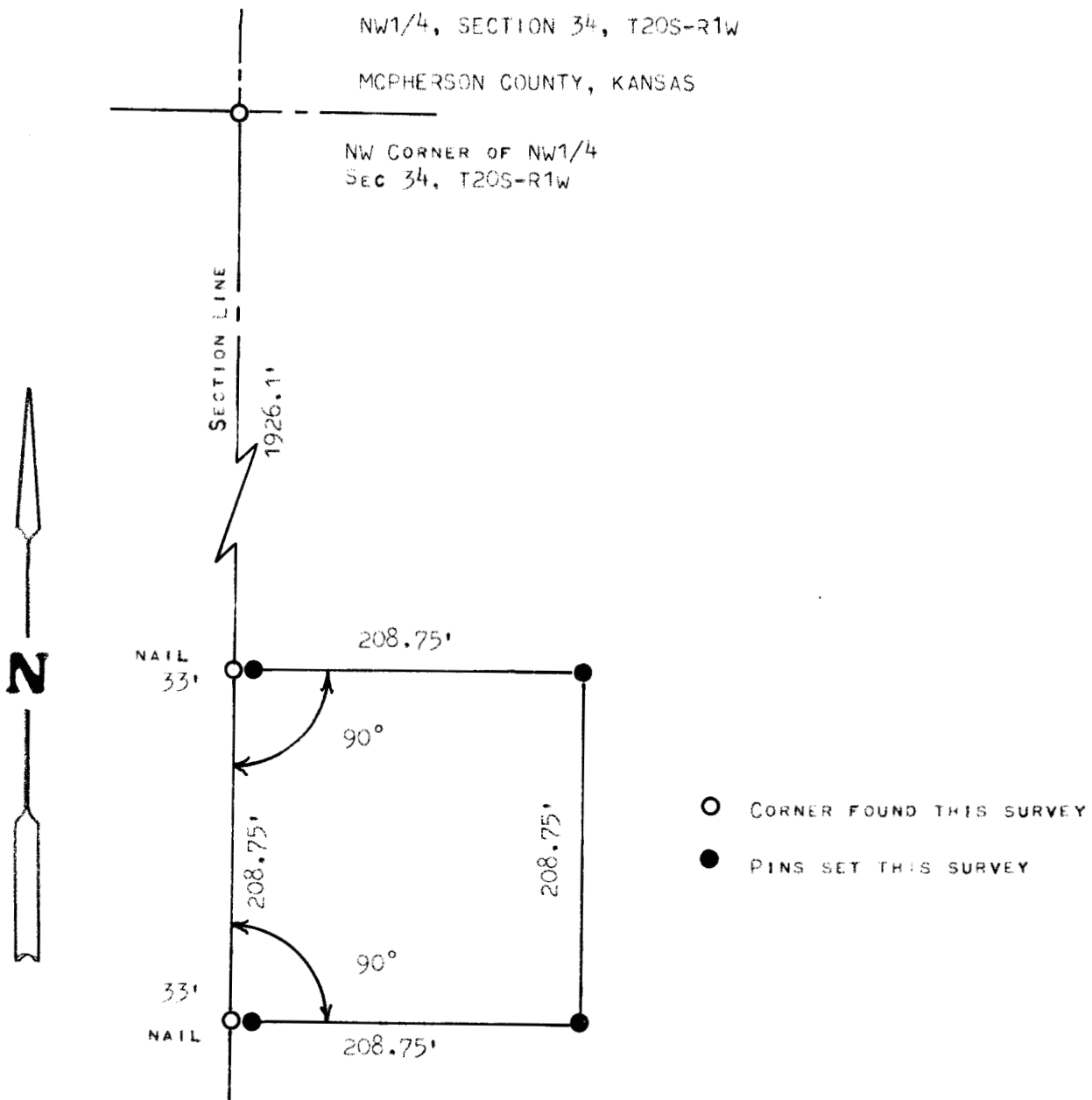


A SURVEY OF A TRACT OF LAND IN THE

NW1/4, SECTION 34, T20S-R1W

MCPHERSON COUNTY, KANSAS

NW CORNER OF NW1/4
SEC 34, T20S-R1W



STATE OF KANSAS)
COUNTY OF MCPHERSON) SS

I, MELVIN FERGUSON, PROFESSIONAL ENGINEER OF THE STATE OF KANSAS DO HEREBY CERTIFY THAT UNDER MY SUPERVISION A SURVEY WAS MADE IN THE NW1/4, SECTION 34, T20S, R1W OF THE 6TH P.M. AND DESCRIBED AS FOLLOWS;
BEGINNING 1926.1 FEET SOUTH OF THE NW CORNER OF SAID NW1/4, SECTION 34, T20S, R1W; THENCE EAST RIGHT ANGLE 208.75 FEET; THENCE SOUTH PARALLEL WITH SECTION LINE 208.75 FEET; THENCE WEST TO SECTION LINE 208.75 FEET; THENCE NORTH ON SECTION LINE 208.75 FEET AND TO THE PLACE OF BEGINNING, SAID TRACT OF LAND CONTAINS 1.0 ACRES MORE OR LESS, AND THAT THE ABOVE PLAT IS A TRUE EXHIBIT OF SAID SURVEY AS FAR AS IT IS KNOWN TO ME.

SURVEY CALLED FOR BY LARRY LARSON

SIGNED THIS 12 DAY OF NOVEMBER, 1976

MELVIN FERGUSON
PROFESSIONAL ENGINEER
MCPHERSON, KANSAS

