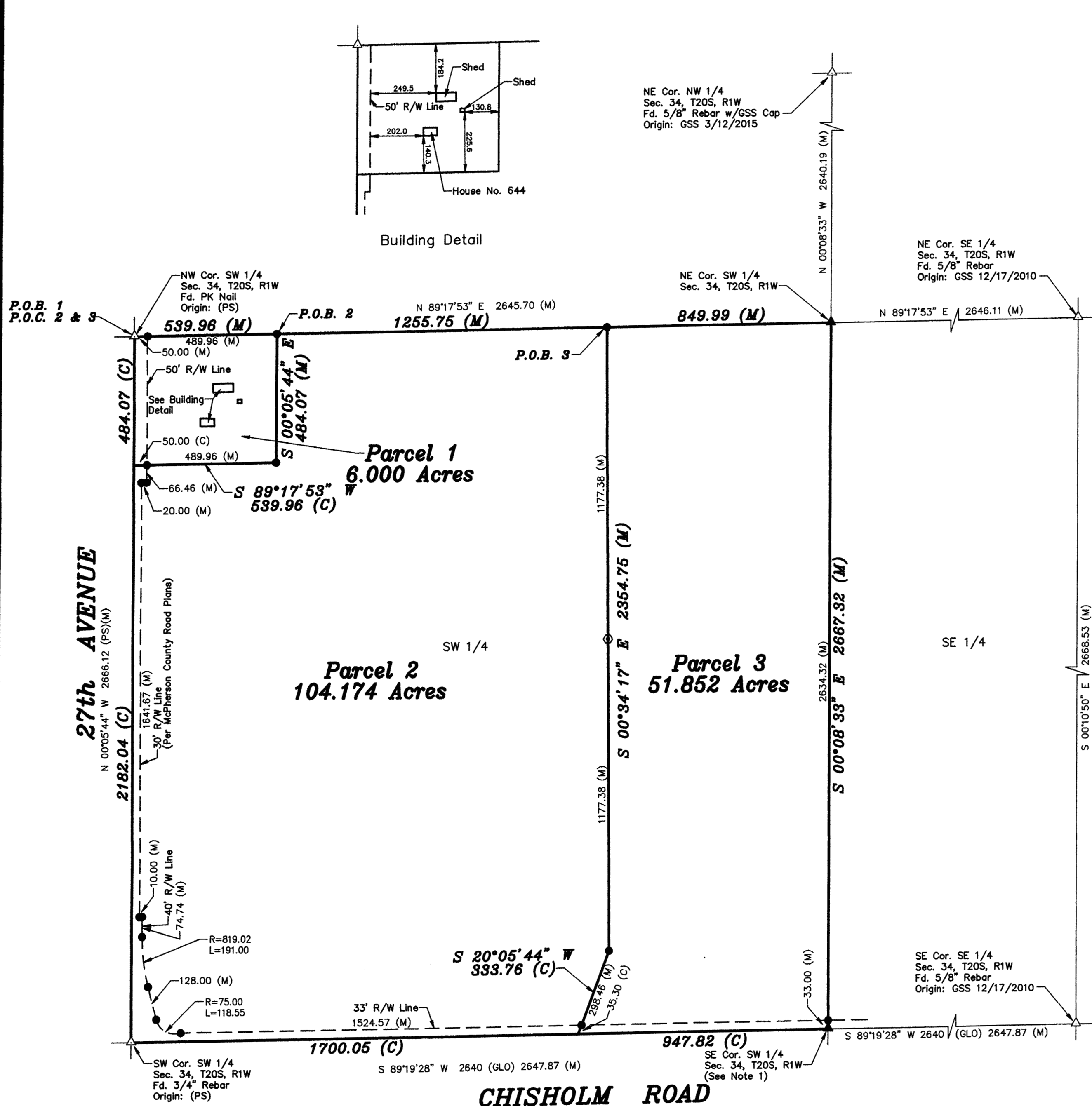


Saved 9/23/2016 8:46:38 AM by ALOPEZ
Plot Date & Time Friday, September 23, 2016 8:54:58 AM Dwg Path U:\DD\GSSFILES\2016\20160606 C3.dwg\20160606 Auto S Grd



SURVEYOR'S CERTIFICATE:

I hereby certify this plat to be a true, correct and complete representation of the property described hereon, as surveyed under my supervision, this 23rd day of September, 2016.



Prepared For:		Description:	
GARETH N. SCHMIDT		A PORTION OF THE SW 1/4 SECTION 34, T20S, R1W McPHERSON COUNTY, KS.	
Prepared By:		Garber Surveying Service, P.A.	
GSS		HUTCHINSON (Main Office) 2908 North Plum St. 67502 Ph. 620-665-7032 Fax 620-663-7401 McPHERSON (Branch Office) 115 East Marlin 67460 Ph. 620-241-4441 Fax 620-241-4458 NEWTON (Branch Office) 511 North Poplar St. 67114 Ph. 316-283-5053 Fax 316-283-5073	
Drawn By: AL	Scale: 1"=300'	Date of Field Work: 9/20/2016	Job No:
Checked By: NDS	Date: 9/23/2016	Sheet 1 of 1 Sheet(s)	G2016-606