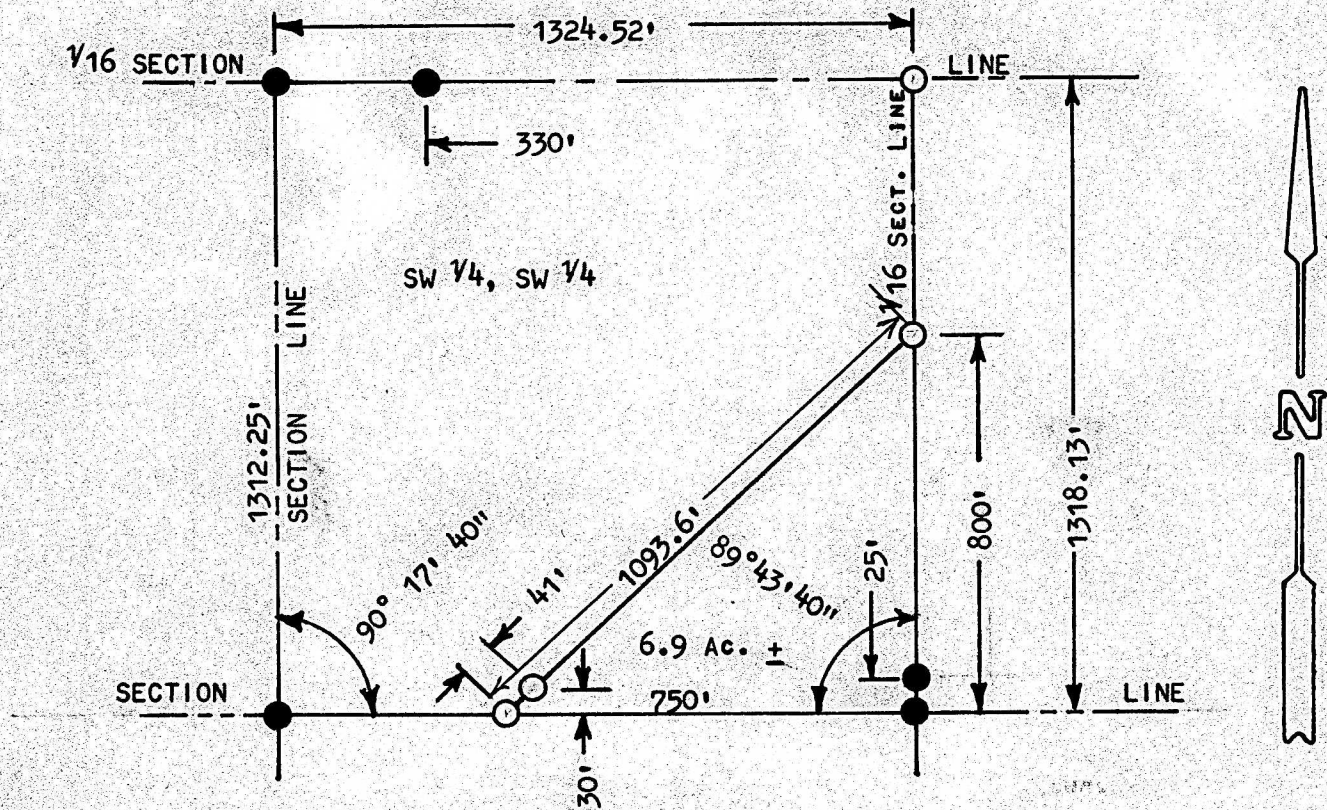


A SURVEY OF A TRACT OF LAND IN THE SW 1/4, SW 1/4,
SECTION 34, T19S-R3W, MCPHERSON COUNTY, KANSAS



STATE OF KANSAS)
COUNTY OF MCPHERSON) SS

I, MELVIN FERGUSON, COUNTY ENGINEER OF MCPHERSON COUNTY, KANSAS, DO HEREBY CERTIFY THAT UNDER MY SUPERVISION A SURVEY WAS MADE OF A TRACT OF LAND IN THE SW 1/4 OF THE SW 1/4 OF SECTION 34, T19S, R3W, OF THE 6TH P.M., AND DESCRIBED AS FOLLOWS:

BEGINNING AT THE SE CORNER OF SAID SW 1/4, SW 1/4, SECTION 34, T19S-R3W; THENCE WEST, ON SECTION LINE, 750 FEET; THENCE NORTHEASTERLY 1093.6 FEET, TO A POINT ON 1/16 SECTION LINE 800 FEET NORTH OF SAID SE CORNER, SW 1/4, SW 1/4, SECTION 34; THENCE SOUTH ON 1/16 SECTION LINE, 800 FEET, TO POINT OF BEGINNING. SAID TRACT CONTAINS 6.9 ACRES, MORE OR LESS.

I ALSO CERTIFY THAT THE ABOVE PLAT IS A TRUE EXHIBIT OF SAID SURVEY AS FAR AS IT IS KNOWN TO ME.

SURVEY CALLED FOR BY JERRY NELSON.

SIGNED THIS 27th DAY OF JUNE, 1974.

Melvin Ferguson
MELVIN FERGUSON
COUNTY ENGINEER
MCPHERSON COUNTY, KANSAS
6772
KANSAS
PROFESSIONAL ENGINEER

MICROFILM