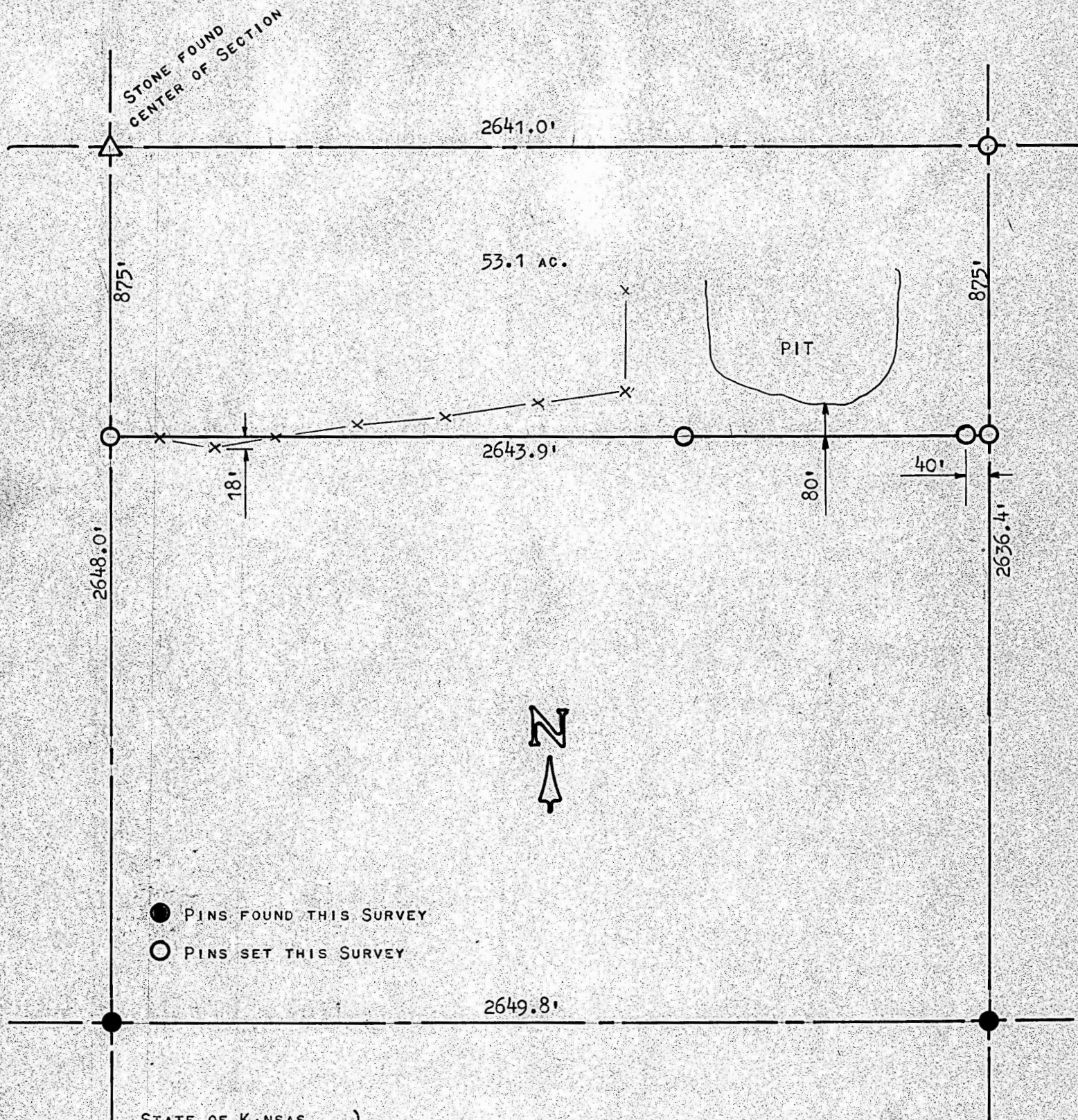


A SURVEY IN THE SE1/4 OF SECTION 34, TOWNSHIP 19  
SOUTH - RANGE 3 WEST



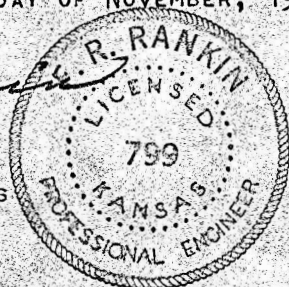
STATE OF KANSAS )  
COUNTY OF McPHERSON )<sup>SS</sup>

I, FRANCIS RANKIN, COUNTY ENGINEER OF McPHERSON CO., KANSAS, DO HEREBY CERTIFY THAT UNDER MY SUPERVISION A SURVEY WAS MADE OF THE NORTH 875 FEET OF THE SE1/4 OF SECTION 34, T19S - R3W OF THE 6TH P.M. SAID TRACT CONTAINS 53.1 ACRES MORE OR LESS AND THE ABOVE PLAT IS A TRUE EXHIBIT OF SAID SURVEY AS FAR AS IT IS KNOWN TO ME.

SURVEY CALLED FOR BY AL HAWKINSON.

SIGNED ON THIS \_\_\_\_\_ DAY OF NOVEMBER, 1971.

*F.R. Rankin*  
F.R. RANKIN  
COUNTY ENGINEER  
McPHERSON Co., KANSAS



MICROFILM