

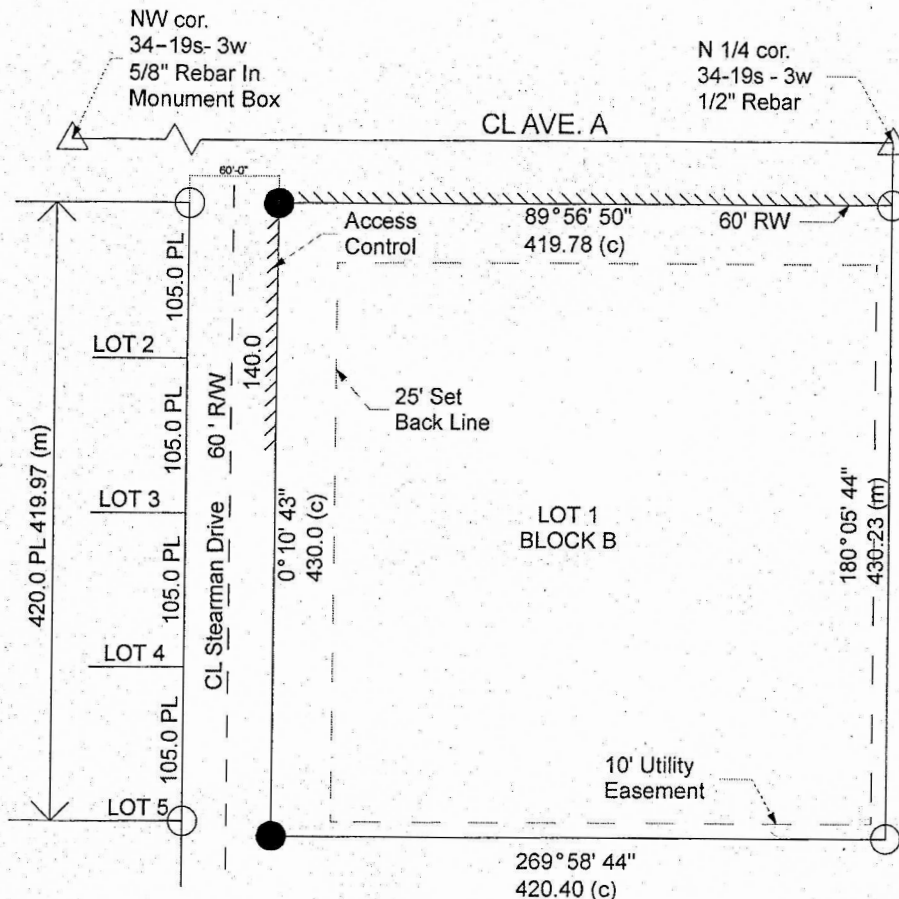
KING

ENTERPRISE GROUP

King Enterprise Group, Inc. • 1401 S. Hwy. 81 Bypass • McPherson, KS 67460 • 620-241-3095

Survey for: BPU

DESCRIPTION: Lot 1, Block B, Barnstormer's Field First Addition, a subdivision in the Northwest Quarter of Section 34, Township 19 South, Range 3 West of the 6th Principal Meridian, McPherson County, Kansas.



Scale
1" = 130'
BASIS OF BEARING
IS ASSUMED

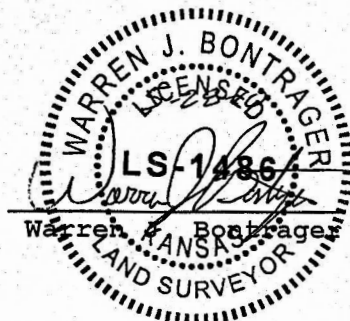
DATE OF FIELD WORK: March 30, 2010

SURVEYOR'S CERTIFICATE:

I hereby certify this plat to be a true, correct and complete representation of the property described above, as surveyed by me, this 28th day of May, 2010.

Legend:

- m - Measured Distance
- pl- Platted
- c - Calculated Distance
- △ - Sectional Monument Found
- - 5/8" x 24" Iron Rebar Found
- - 5/8" x 24" Iron Rebar Set



RECEIVED

MAY 7 8 2010