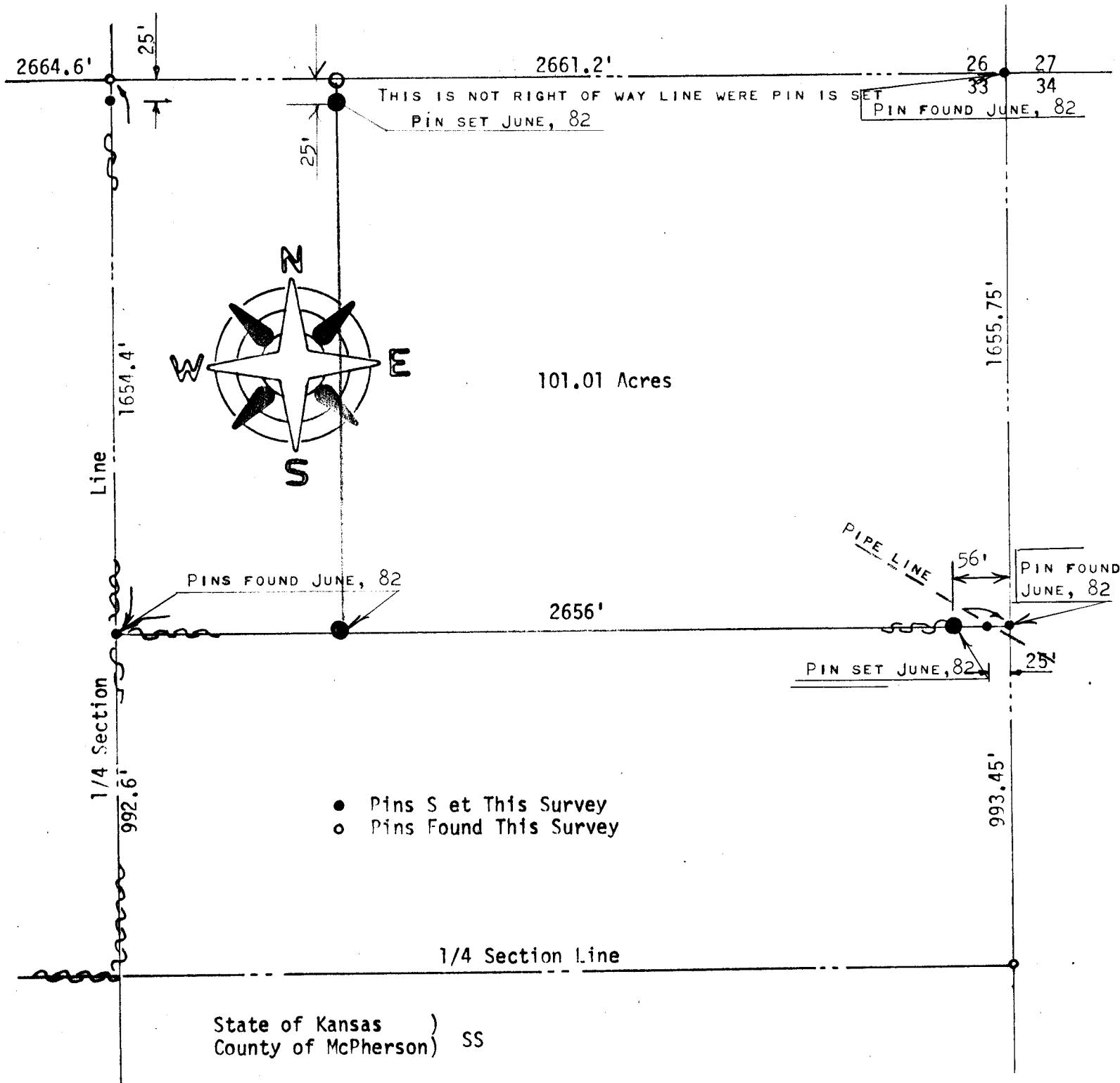


SURVEY OF PART OF THE NE 1/4
SECTION 33, T20S, R4W
MC PHERSON, KANSAS



I, F. R. Rankin, County Engineer of McPherson County, Kansas, do hereby certify that under my supervision a survey was made of the N 1/2, NE 1/4 and the N 1/4, S 1/2, NE 1/4 Section 33, T20S, R4W of the 6th P.M. and the above plat is a true exhibit of said survey as far as it is known to me.

Survey requested by D. F. Neufeldt

Signed this 19 day of November, 1973

F. R. Rankin, P. E.
Administrator of P.W. & County Eng.
McPherson County, Kansas

