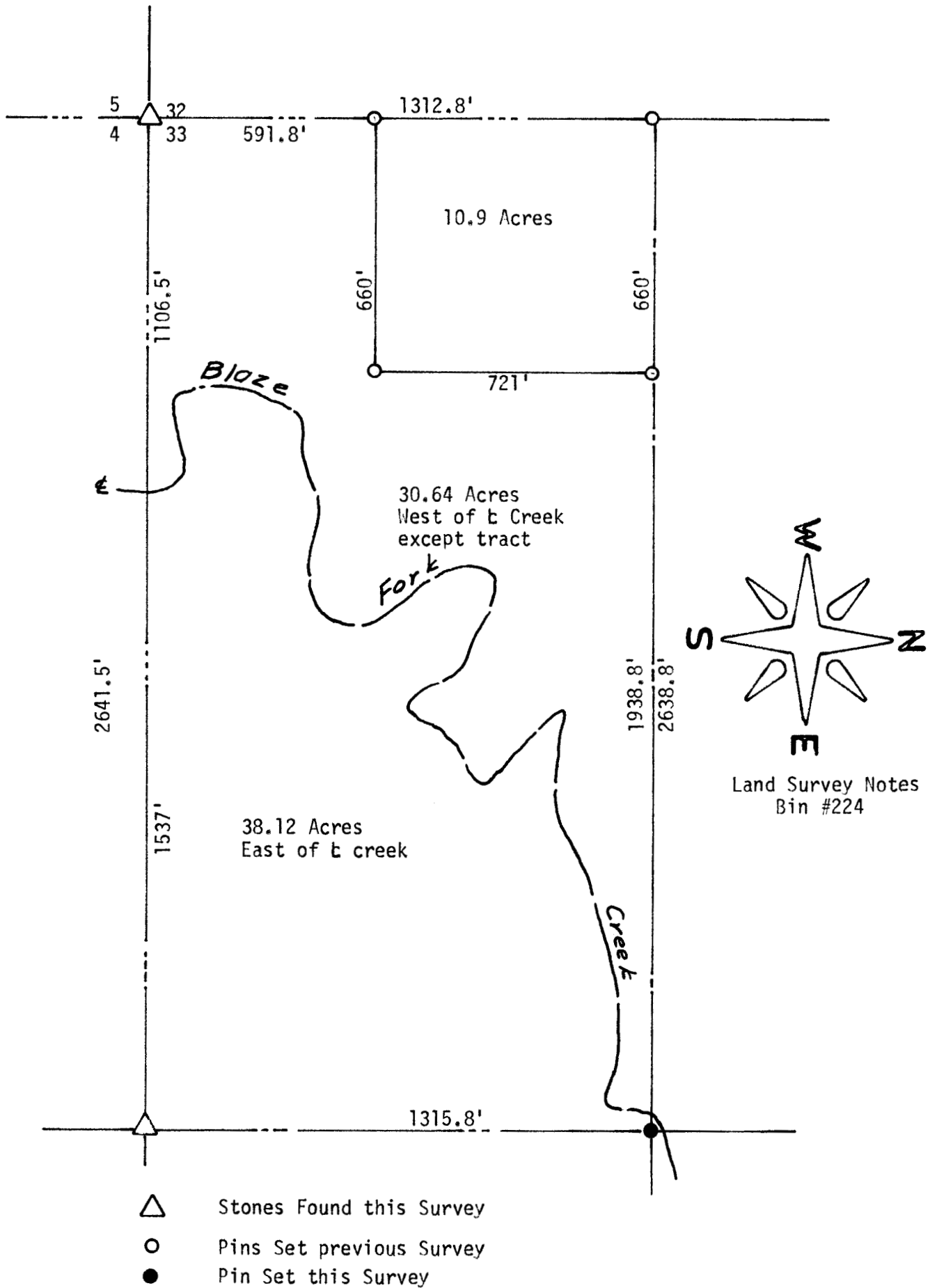


AREA SURVEY S1/2, SW 1/4
SECTION 33, T19S, R4W
MC PHERSON, KANSAS

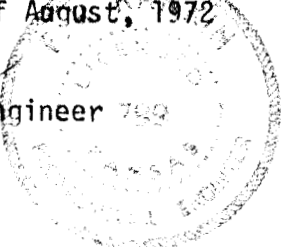


State of Kansas)
County of McPherson) SS

I, F. R. Rankin, County Engineer of McPherson County, Kansas, do hereby certify that under my supervision a land survey was made to determine the acres East and West of Blaze Fork Creek in the S1/2, SW1/4 Section 33, T19S, R4W of the 6th P.M. The above plat is a true exhibit of said survey as far as it is known to me.

Survey requested by Marvin Krenbier
Signed this 3 day of August, 1972

F. R. Rankin, County Engineer
McPherson, Kansas



McPHERSON