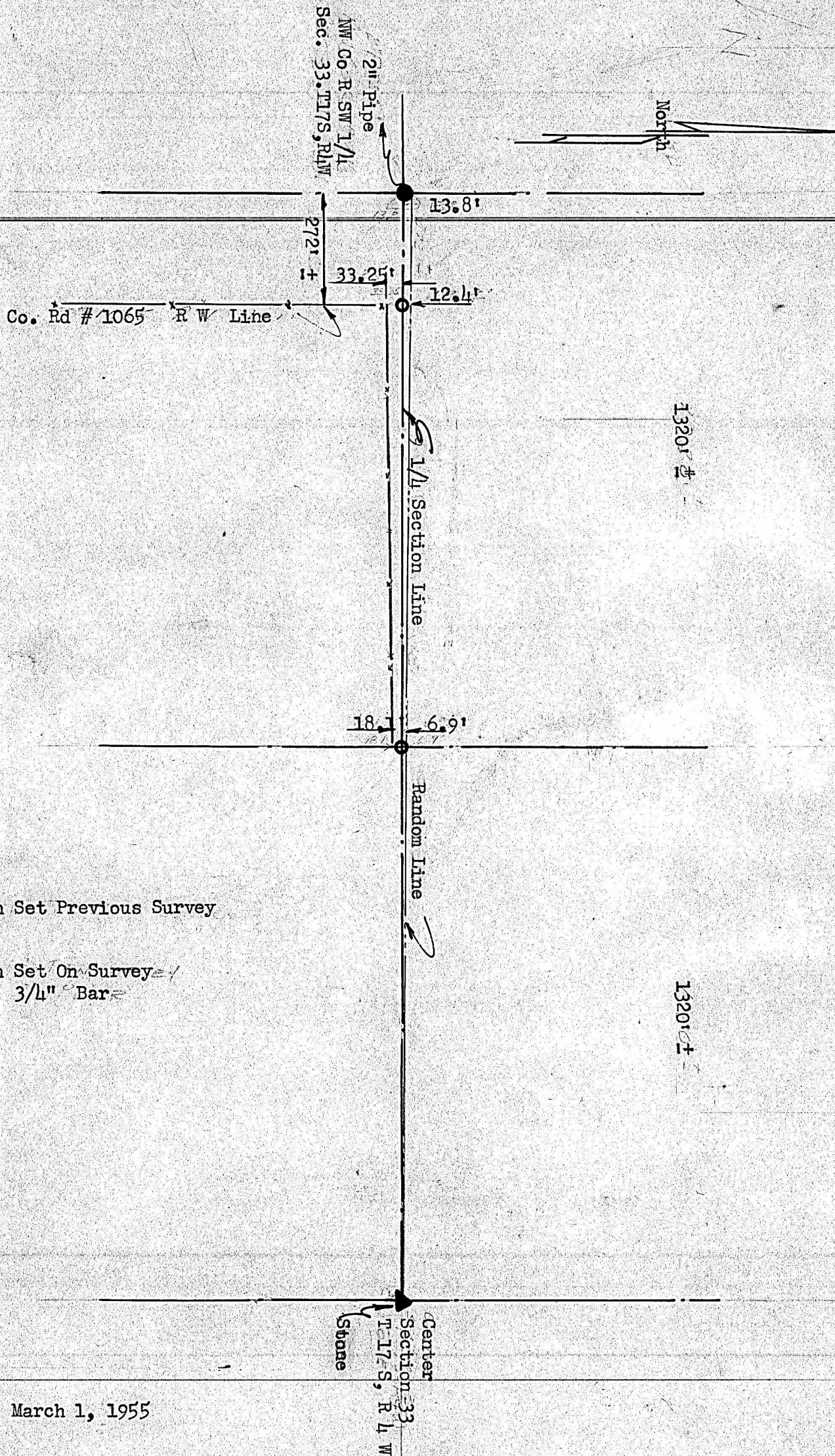


# A SURVEY IN THE SW 1/4 SECTION

33, T 17 S, R 4 W



● Pin Set Previous Survey

○ Pin Set On-Survey  
3/4" Bar

March 1, 1955

McPherson County) SS  
State of Kansas )

I, Francis D. Wagner, County Engineer of McPherson County, Kansas, do hereby certify that I did cause to be done on the 1st day of March, 1955, a survey to determine the Quarter Section line between the NW 1/4 Section 33, T 17 S, R 4 W, of the 6th P.M., and that the accompanying plat is a true exhibit of said Survey.

*Francis D. Wagner*