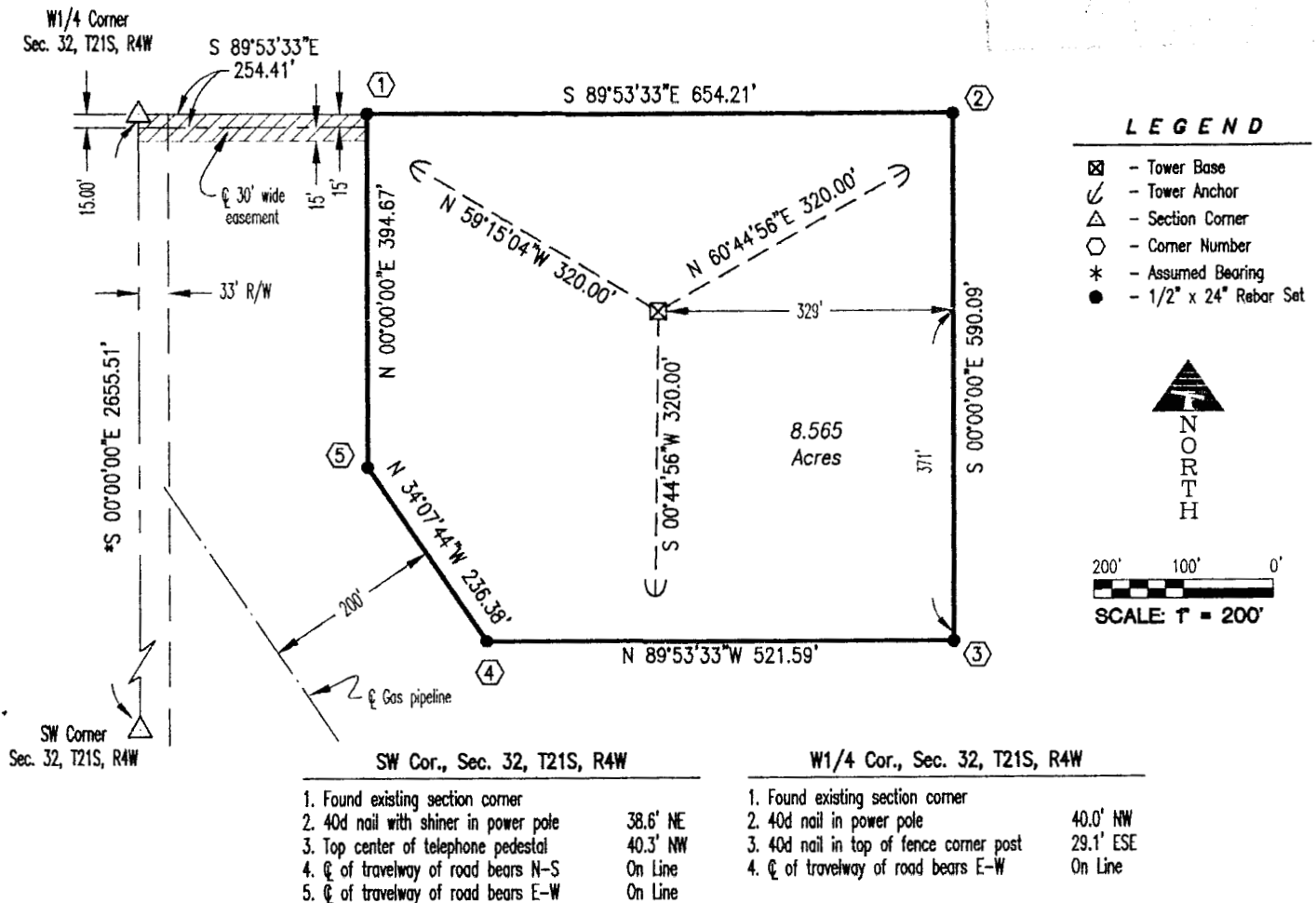


CERTIFICATE OF SURVEY

KINI L.C.

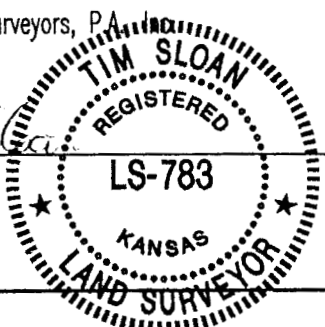
Inman/Buhler Cell Site



Sloan & Meier Surveyors, P.A.

By: Tim Sloan

Tim Sloan, R.L.S.
Vice President



103 South 4th Street, Suite 1 • Manhattan, Kansas 66502 • (785) 776-0541 • FAX 776-9760 • smsurv@flintheills.com

Project #A980615