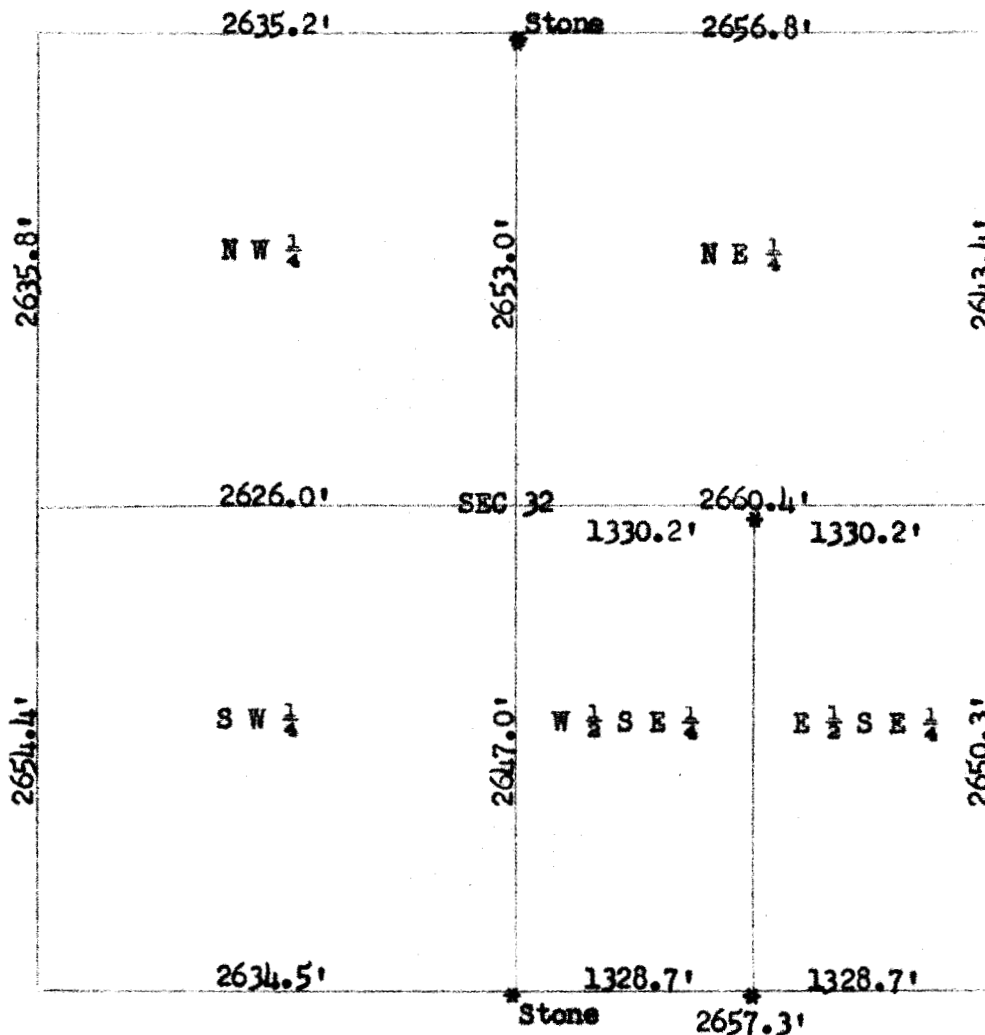


22

[illegible]

State of Kansas, County of McPherson, ss

I, Francis D. Wagner, County Engineer of McPherson County, Kansas, do hereby certify that I did on the 5th day of July, 1950, survey and divide the SE $\frac{1}{4}$  of Section 32, T-21-S, R-1-W, in the County of McPherson, Kansas, and that the accompanying plat is a true exhibit of said survey.

FRANCIS D. WAGNER  
County Engineer  
McPherson County