

(SEAL)

Register of Deeds

Deputy

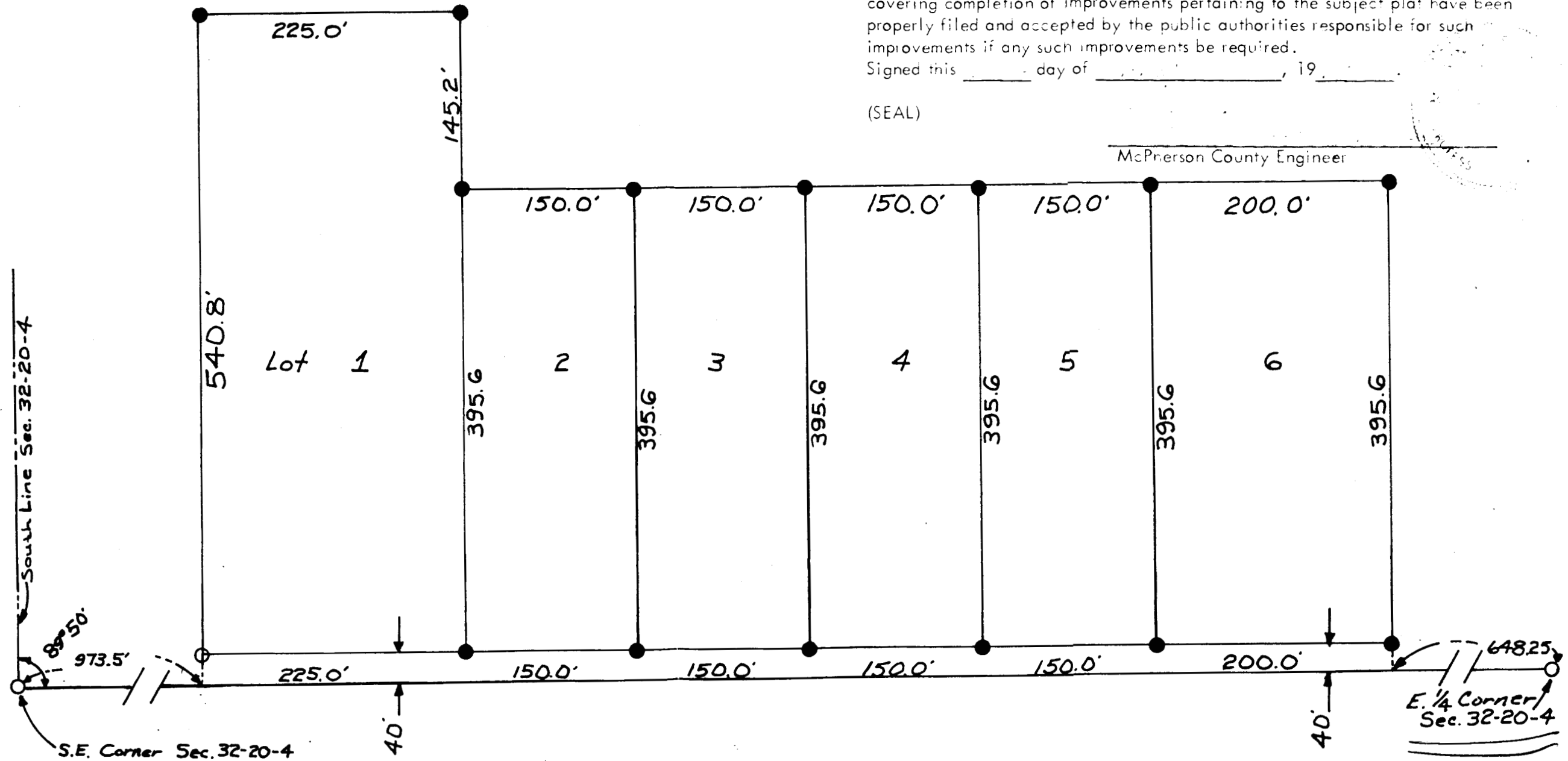
CERTIFICATE AS TO COUNTY PUBLIC IMPROVEMENT \$

I, the undersigned, do hereby certify that the required guarantees covering completion of improvements pertaining to the subject plat have been properly filed and accepted by the public authorities responsible for such improvements if any such improvements be required.

Signed this \_\_\_\_\_ day of \_\_\_\_\_, 19\_\_\_\_.

(SEAL)

McPherson County Engineer



COUNTY FILE

LEGEND

○ Iron Pin Found

● Iron Pin Set

NORTH  
SCALE 1" = 100'



**GREAT PLAINS**  
ENGINEERS & SURVEYORS  
McPherson, Kansas

PROJ. MC-7812

DATE 5-1-1978

SHEET 1 OF 1

SEE BIN 83 E

MICROFILM