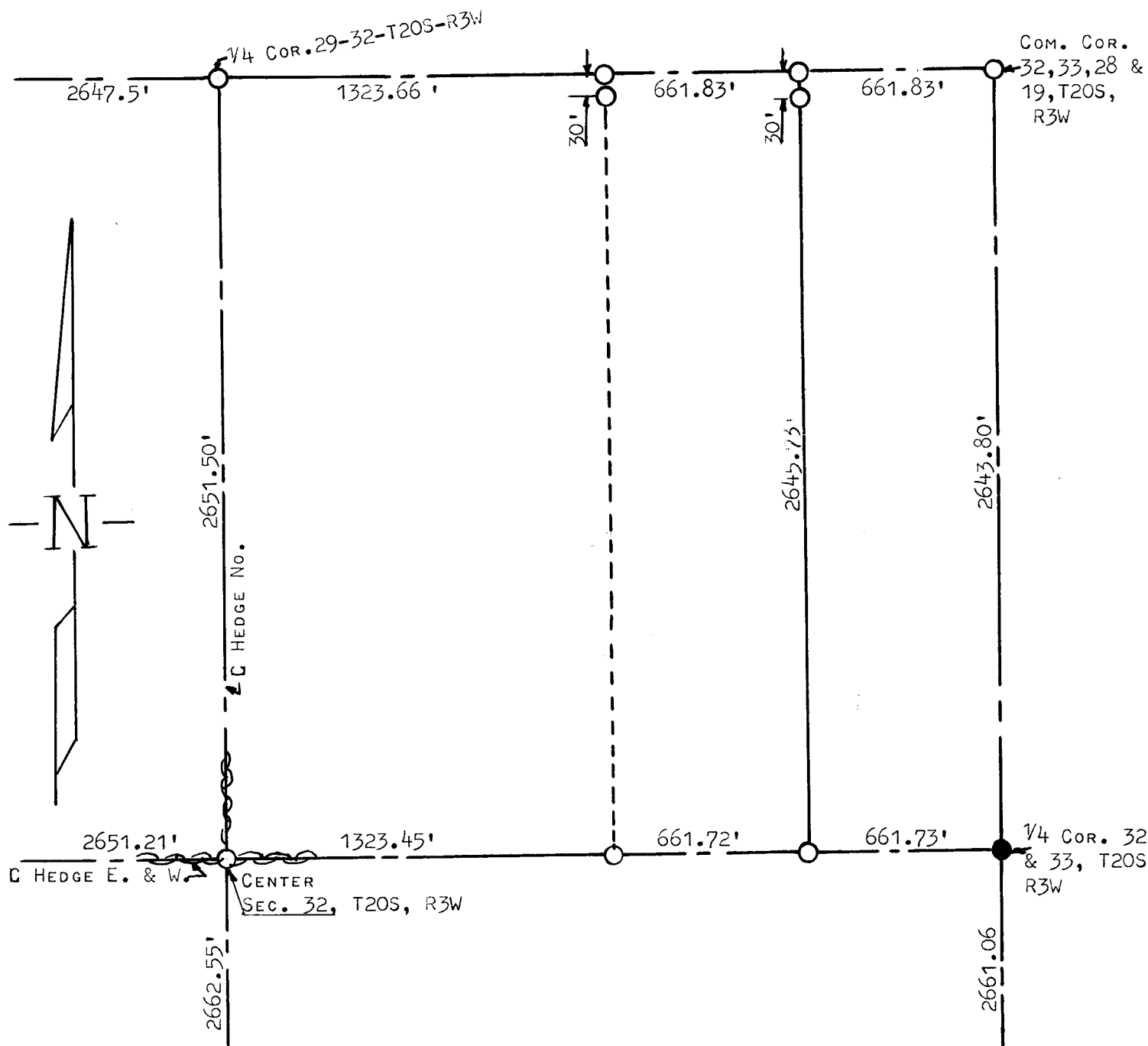


A SURVEY IN THE NE¹/₄ SECTION
32, T20S, R3W



- PIN FOUND THIS SURVEY
- PINS SET THIS SURVEY

I, FRANCIS D. WAGNER, COUNTY ENGINEER OF McPHERSON COUNTY, KANSAS DO HEREBY CERTIFY THAT I DID CAUSE TO BE DONE ON THE 11TH DAY OF MAY, 1960 A SURVEY OF THE E¹/₂ OF THE E¹/₂ OF THE NE¹/₄ SECTION 32-T20S-R3W OF THE SIXTH PRINCIPAL MERIDIAN, AND THAT THE ACCOMPANYING PLAT IS A TRUE EXHIBIT OF SAID SURVEY.

Francis D. Wagner

FRANCIS D. WAGNER
COUNTY ENGINEER
McPHERSON COUNTY

MAY 12, 1960



MICROFILM