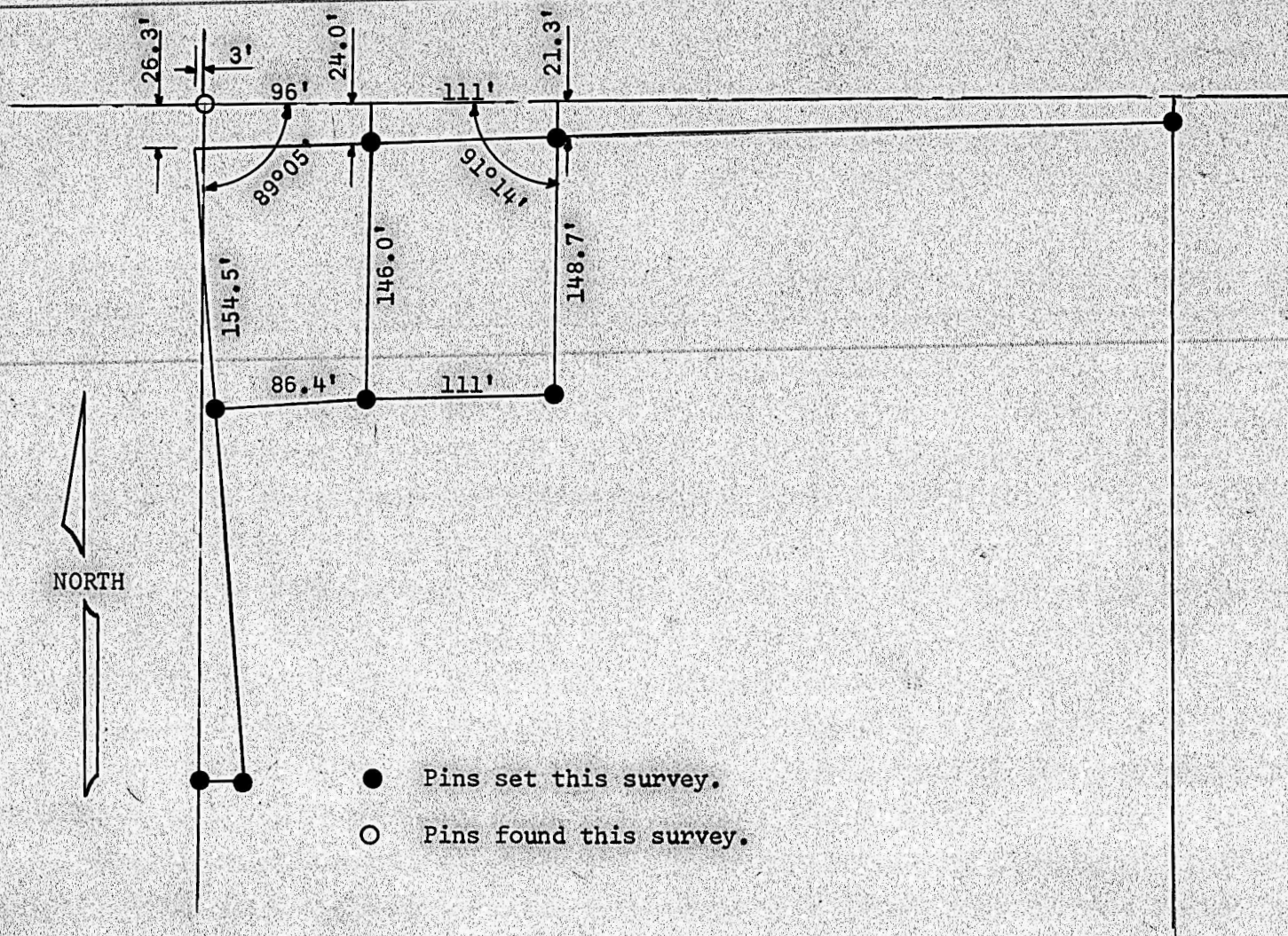


A SURVEY IN THE NE 1/4
SECTION 32, T19S, R3W



State of Kansas)
County of McPherson) SS

I, Francis Rankin, County Engineer of McPherson County, Kansas do hereby certify that under my supervision a survey was made on the 13th day of February, 1963 in the NE 1/4 Section 32, T19S, R3W of the 6th P.M., and that the said tract is described as follows;

Commencing at the NW corner of the NE 1/4 Section 32, T19S, R3W, thence east 96 feet on said section line, thence south 24 feet parallel with the Missouri Pacific Railroad to a point of beginning, thence east 111 feet to a point 21.3 feet south of section line thence 148.7 feet south, thence 111 feet west, thence north 146.0 feet parallel with Missouri Pacific Railroad to the place of beginning and that the accompanying plat is a true exhibit of said survey as far as it is known to me.

14 February, 1963

Francis Rankin
Francis Rankin
County Engineer
McPherson County

799
KANSAS
PROFESSIONAL ENGINEER