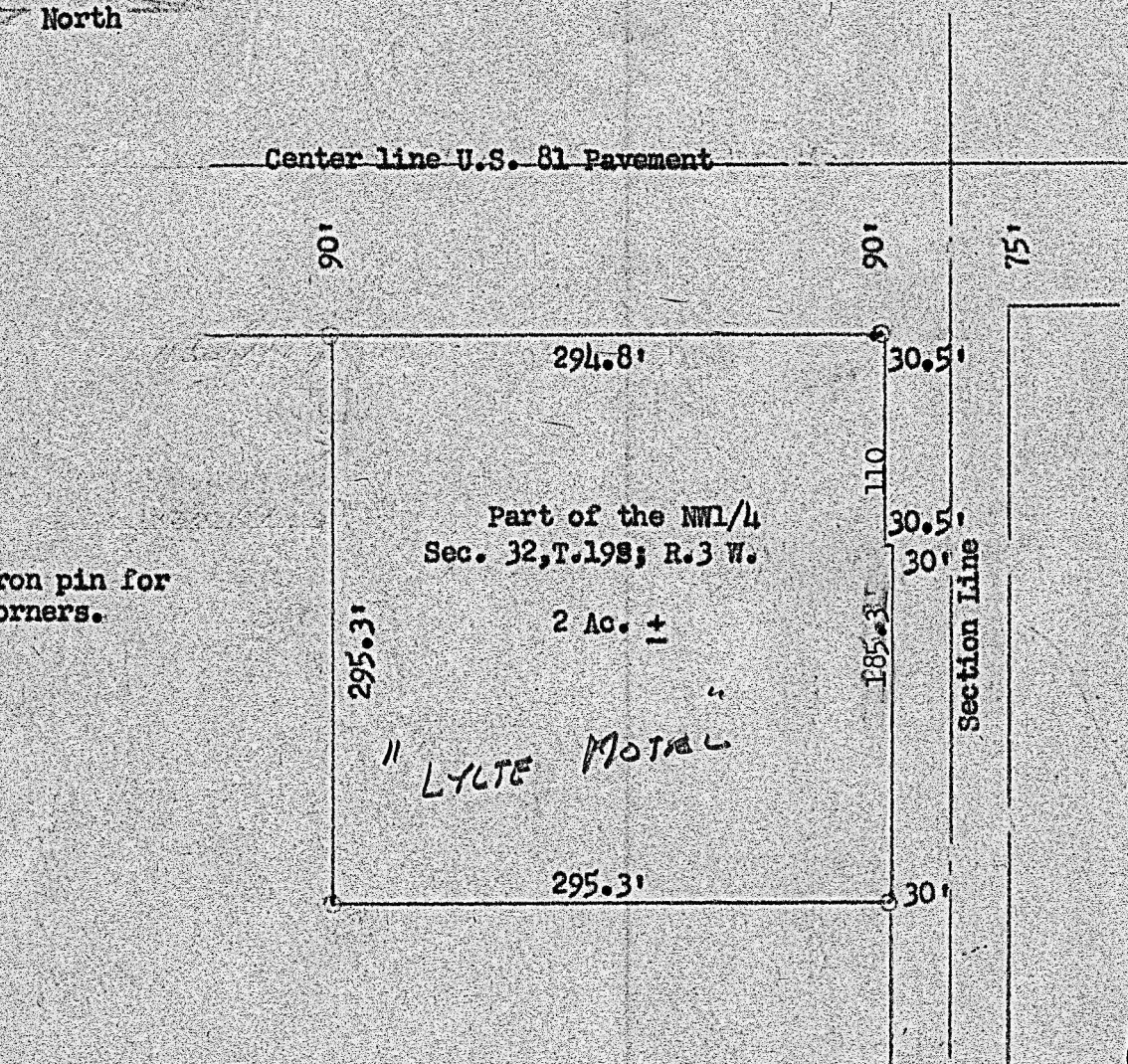


Sec 32

FILE

26th February, 1952

North



FRANK LYLLE

State of Kansas, County of McPherson, SS:

I, Francis D. Wagner, County Engineer of McPherson County of Kansas, do hereby certify that I did cause to be done on the 26th day of February 1952, a survey of 2 acre tract of land in the NW Quarter Sec. 32, T. 19 S.; R.3 W. of sixth Principal Meridian and that the accompanying plat is a true and correct exhibit of said survey.

Francis D. Wagner

Francis D. Wagner
County Engineer
McPherson County

ENCLOSURE