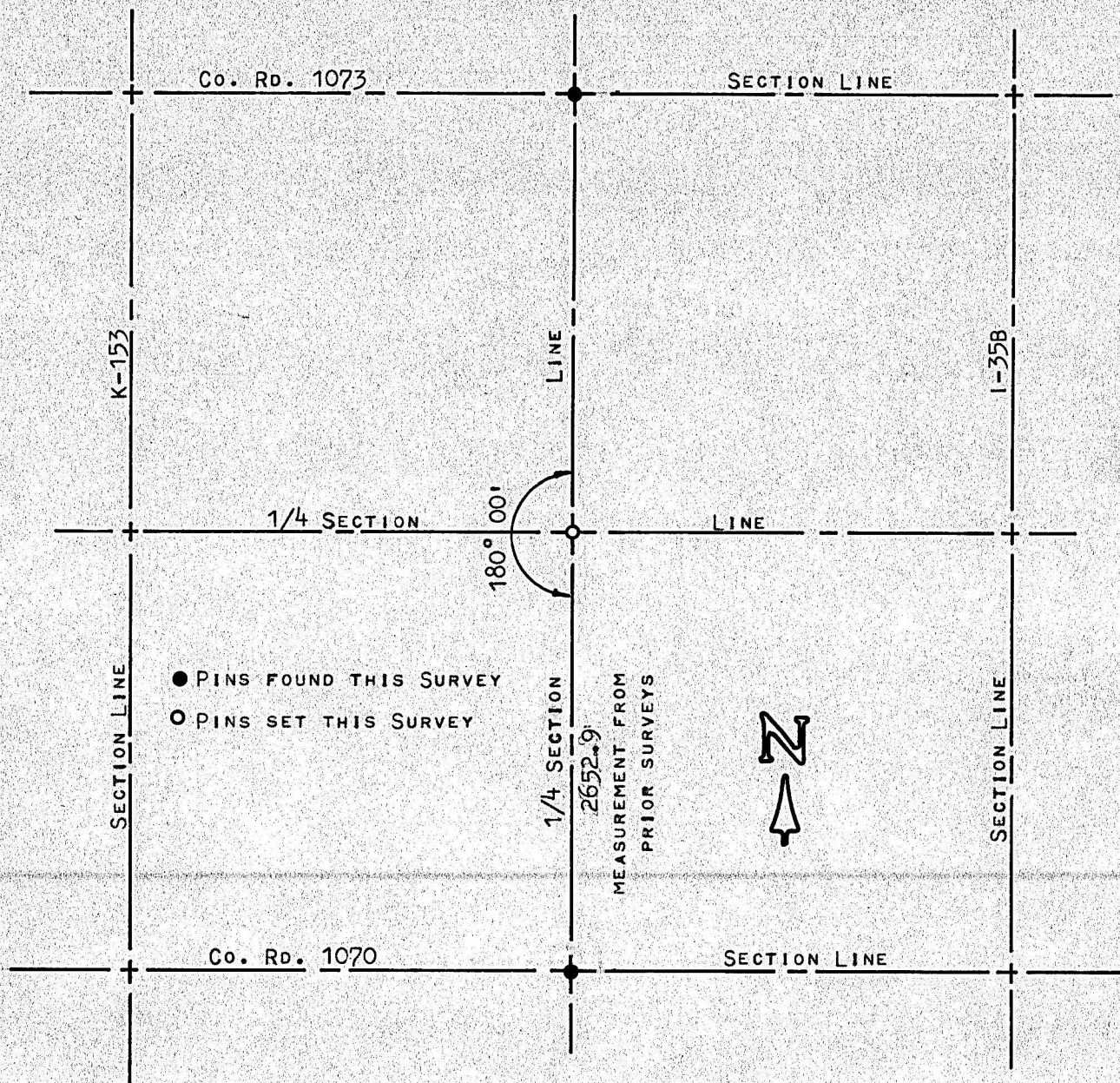


A SURVEY IN SECTION 32,
TOWNSHIP 19 SOUTH - RANGE 3 WEST



STATE OF KANSAS)
COUNTY OF McPHERSON) SS

I, MELVIN FERGUSON, COUNTY ENGINEER OF McPHERSON CO., KANSAS,
DO HEREBY CERTIFY THAT UNDER MY SUPERVISION A SURVEY WAS MADE TO
ESTABLISH THE CENTER AND THE WEST LINE OF THE E1/2 OF SECTION 32,
T19S - R3W OF THE 6TH P.M.

I, ALSO CERTIFY THAT THE ABOVE PLAT IS A TRUE EXHIBIT OF
SAID SURVEY AS FAR AS IT IS KNOWN TO ME.

SIGNED ON THIS 19th DAY OF DECEMBER, 1978.

Melvin Ferguson
MELVIN FERGUSON

COUNTY ENGINEER
McPHERSON CO., KANSAS

SURVEY CALLED FOR BY N.C.R.A.