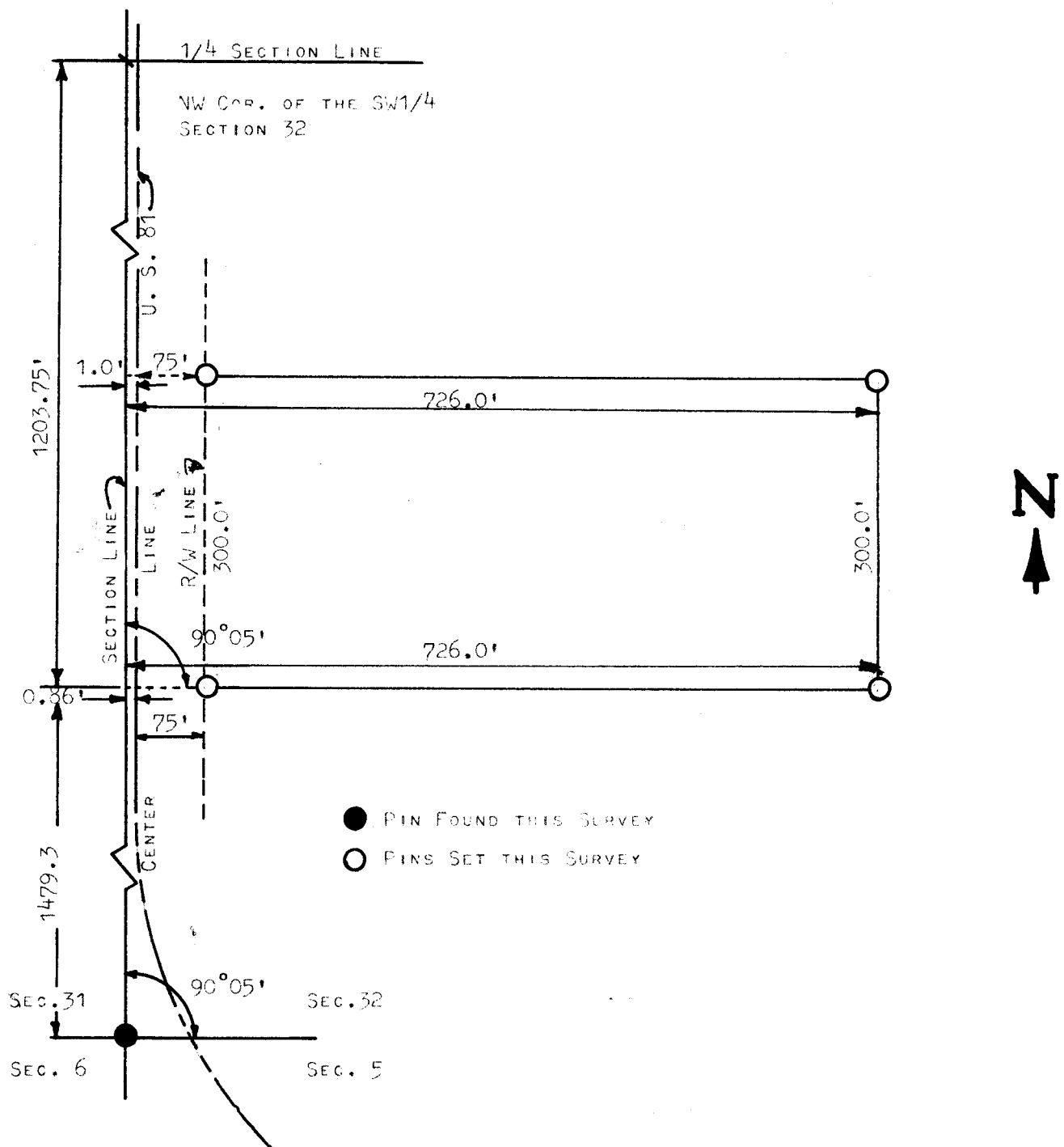


A SURVEY OF A TRACT OF LAND
IN THE SW1/4 SECTION 32
T19S-R3W
McPHERSON, KANSAS



STATE OF KANSAS)
COUNTY OF MCPHERSON) SS

I, FRANCIS RANKIN, PROFESSIONAL ENGINEER OF THE STATE OF KANSAS DO HEREBY CERTIFY THAT UNDER MY SUPERVISION A SURVEY WAS MADE IN THE SW1/4 SECTION 32, T19S-R3W OF THE 6TH P.M. AND DESCRIBED AS FOLLOWS:

BEGINNING AT THE NW CORNER OF THE SW1/4 SECTION 32, T19S-R3W THENCE SOUTH 1203.75 FEET FOR A POINT OF BEGINNING; THENCE EAST PARALLEL WITH SOUTH SECTION LINE 726.0 FEET; THENCE NORTH 300.0 FEET PARALLEL WITH WEST SECTION LINE; THENCE WEST PARALLEL WITH SOUTH SECTION LINE 726.0 FEET; THENCE SOUTH 300.0 FEET TO PLACE OF BEGINNING, SAID TRACT OF LAND CONTAINS 5 ACRES MORE OR LESS, AND THAT THE ACCOMPANYING PLAT IS A TRUE EXHIBIT OF SAID SURVEY AS FAR AS IT IS KNOWN TO ME.

SURVEY CALLED FOR BY CARL STUCKY

SIGNED THIS 27 DAY OF APRIL, 1966

Francis Rankin
FRANCIS RANKIN
PROFESSIONAL ENGINEER
MCPHERSON, KANSAS

FIELD NOTES IN FIELD BOOK #2 RANGE 3

MICROFILM