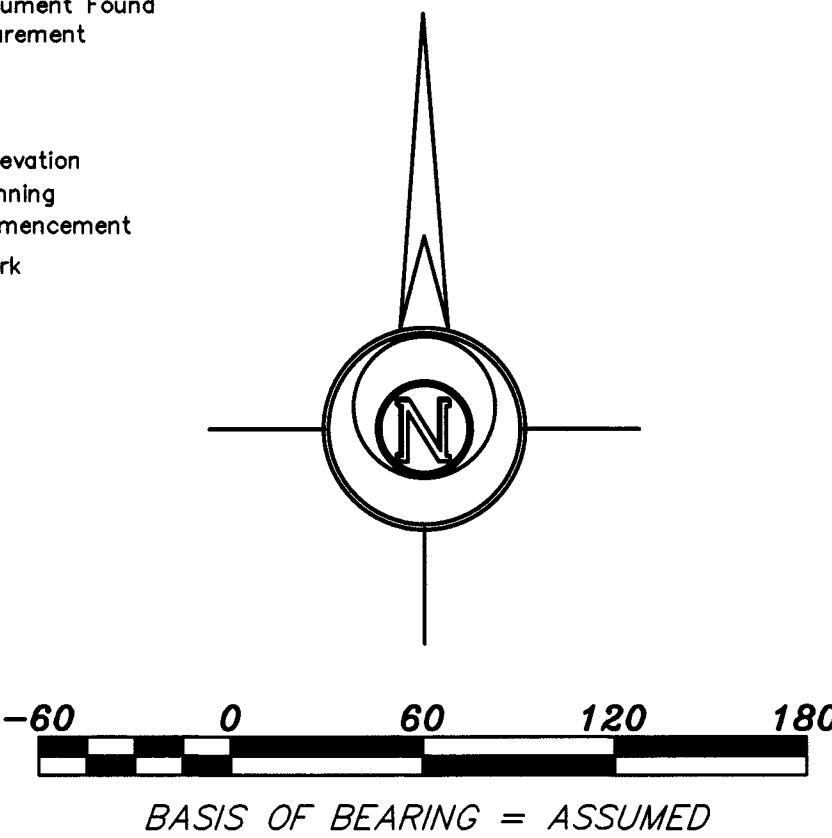


LINE TABLE

L1	- S 00°39'51" W	66.29'
L2	- S 39°56'06" E	69.22'
L3	- S 44°58'50" E	132.80'
L4	- S 30°18'03" E	68.36'
L5	- S 12°21'44" W	71.36'
L6	- N 89°12'09" W	62.41'
L7	- S 51°25'10" W	38.13'
L8	- S 17°43'37" W	35.00'
L9	- S 08°23'02" E	6.80'
L10	- S 58°22'24" E	102.08'
L11	- N 88°08'26" E	45.71'
L12	- S 67°50'09" E	63.57'
L13	- S 02°47'58" E	103.30'
L14	- S 06°34'31" W	13.88'
L15	- S 23°29'30" W	34.00'
L16	- S 74°42'58" W	74.35'
L17	- N 52°07'51" W	32.71'
L18	- S 69°30'14" W	12.13'
L19	- S 39°00'04" W	78.22'
L20	- N 78°45'14" W	47.54'
L21	- N 65°56'23" W	66.08'
L22	- N 81°14'13" W	138.41'
L23	- N 51°03'41" W	89.74'
L24	- N 00°10'07" W	91.72'
L25	- N 04°56'03" W	124.20'
L26	- N 34°35'22" E	118.40'
L27	- N 02°31'47" W	319.53'
L28	- N 77°56'29" E	36.51'
L29	- S 50°13'33" E	20.16'
L30	- S 36°49'17" E	21.56'
L31	- S 80°08'39" E	37.26'
L32	- N 65°13'25" E	14.78'
L33	- S 85°40'57" E	30.58'
L34	- S 67°40'26" E	35.04'
L35	- S 49°26'00" E	21.22'

LEGEND

△ - Sectional Monument Found
(R) - Record measurement
(C) - Calculated
(W) - Measured
FF - Finished Floor
BFE - Base Flood Elevation
P.O.B. - Point of Beginning
P.O.C. - Point of Commencement
SBM - Site Benchmark



DESCRIPTION OF RECORD:

A part of the North Half of the Northwest Quarter (N/2 NW/4) of Section Thirty-two (32), Township Nineteen (19) South, Range Three (3) West of the 6th P.M., described as follows:

Commencing at the Northwest corner of said NW/4 Section 32, thence East on section line 1102.85 feet to place of beginning, thence South 621.8 feet to a point 50 feet Northerly of a right-of-way condemned by the City of McPherson in District Court Case No. 14, 947; thence Southeasterly and parallel to and 50 feet from said right-of-way 1020 feet; thence North parallel with the West property line 790 feet, thence West 186.5 feet; thence Northwesterly at a deflection angle right 45 degrees a distance of 424.3 feet, thence North 143.8 feet to the section line; thence West 330 feet to place of beginning, containing 13.64 acres, more or less.

DESCRIPTION FOR REMOVAL FROM FEMA ZONE AE:

A portion of the North Half of the Northwest Quarter of Section 32, Township 19 South, Range 3 West of the 6th Principal Meridian, McPherson County, Kansas, described as follows:

Commencing at the Northwest corner of said Northwest Quarter; thence on a NAD 83 Kansas South Zone bearing of South 89°20'09" East on the North line of said Northwest Quarter a distance of 1432.84 feet; thence South 00°39'51" West a distance of 77.51 feet to the point of beginning; thence South 00°39'51" West a distance of 66.29 feet; thence South 39°56'06" East a distance of 69.22 feet; thence South 44°58'50" East a distance of 132.80 feet; thence South 30°18'03" East a distance of 68.36 feet; thence South 12°21'44" West a distance of 71.36 feet; thence North 89°12'09" West a distance of 62.41 feet; thence South 51°25'10" West a distance of 38.13 feet; thence South 17°43'37" West a distance of 35.00 feet; thence South 08°23'02" East a distance of 6.80 feet; thence South 58°22'24" East a distance of 102.08 feet; thence North 88°08'26" East a distance of 45.71 feet; thence South 67°50'09" East a distance of 63.57 feet; thence South 02°47'58" East a distance of 103.30 feet; thence South 06°34'31" West a distance of 13.88 feet; thence South 23°29'30" West a distance of 34.00 feet; thence South 74°42'58" West a distance of 74.35 feet; thence North 52°07'51" West a distance of 32.71 feet; thence South 69°30'14" West a distance of 12.13 feet; thence South 39°00'04" West a distance of 78.22 feet; thence North 78°45'14" West a distance of 47.54 feet; thence North 65°56'23" West a distance of 66.08 feet; thence North 81°14'13" West a distance of 138.41 feet; thence North 51°03'41" West a distance of 89.74 feet; thence North 00°10'07" West a distance of 91.72 feet; thence North 04°56'03" West a distance of 124.20 feet; thence North 34°35'22" East a distance of 118.40 feet; thence North 02°31'47" West a distance of 319.53 feet; thence North 77°56'29" East a distance of 36.51 feet; thence South 50°13'33" East a distance of 20.16 feet; thence South 36°49'17" East a distance of 21.56 feet; thence South 80°08'39" East a distance of 37.26 feet; thence North 65°13'25" East a distance of 14.78 feet; thence South 85°40'57" East a distance of 30.58 feet; thence South 67°40'26" East a distance of 35.04 feet; thence South 49°26'00" East a distance of 21.22 feet to the point of beginning.

The above described tract contains 5.271 Acres and is subject to any easements or restrictions of record.

BASE FLOOD ELEVATION: 1484.4 (NAVD88)

ZONE: AE & FLOODWAY

MAP PANEL: 20113C0356E

EFFECTIVE DATE: 1/16/2009

NOTE: BFE is from FIS Profile

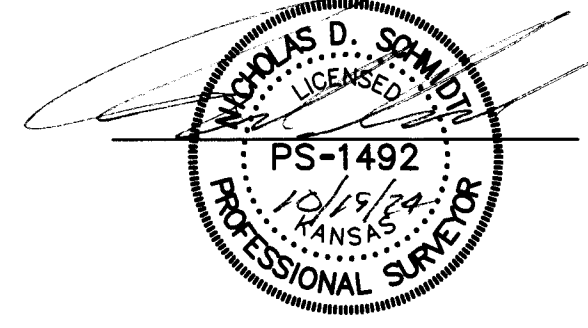
BENCHMARK:


Benchmark Disk Stamped "T 296 1952" in Concrete.

Elevation=1493.37 (NAVD88)

SURVEYOR'S CERTIFICATE:

I hereby certify this plat to be a true, correct and complete representation of the property described hereon and the improvements and elevations thereon, as surveyed under my supervision, this 19th day of October, 2024.



Prepared For:	MCPHERSON COUNTY PLANNING & ZONING		Description:	A PORTION OF THE NW 1/4 SECTION 32, T19S, R3W MCPHERSON COUNTY, KANSAS			
Prepared By:	Garber Surveying Service, P.A.						
			HUTCHINSON 2908 North Plum St. 67502 Ph. 620-665-7032 (Main Office)			BRANCH OFFICES: MCPHERSON Ph. 620-241-4441 SALINA Ph. 785-404-6302	MANHATTAN Ph. 785-320-4810 NEWTON Ph. 316-283-5053 WICHITA Ph. 316-260-9933
Drawn By:	KJC/JAK	Scale:	1"= 60'	Date of Field Work:	August 5, 2024	Job No:	G2024-620
Checked By:	NDS	Date:	10/19/2024	Sheet	1 of 1 Sheet(s)		