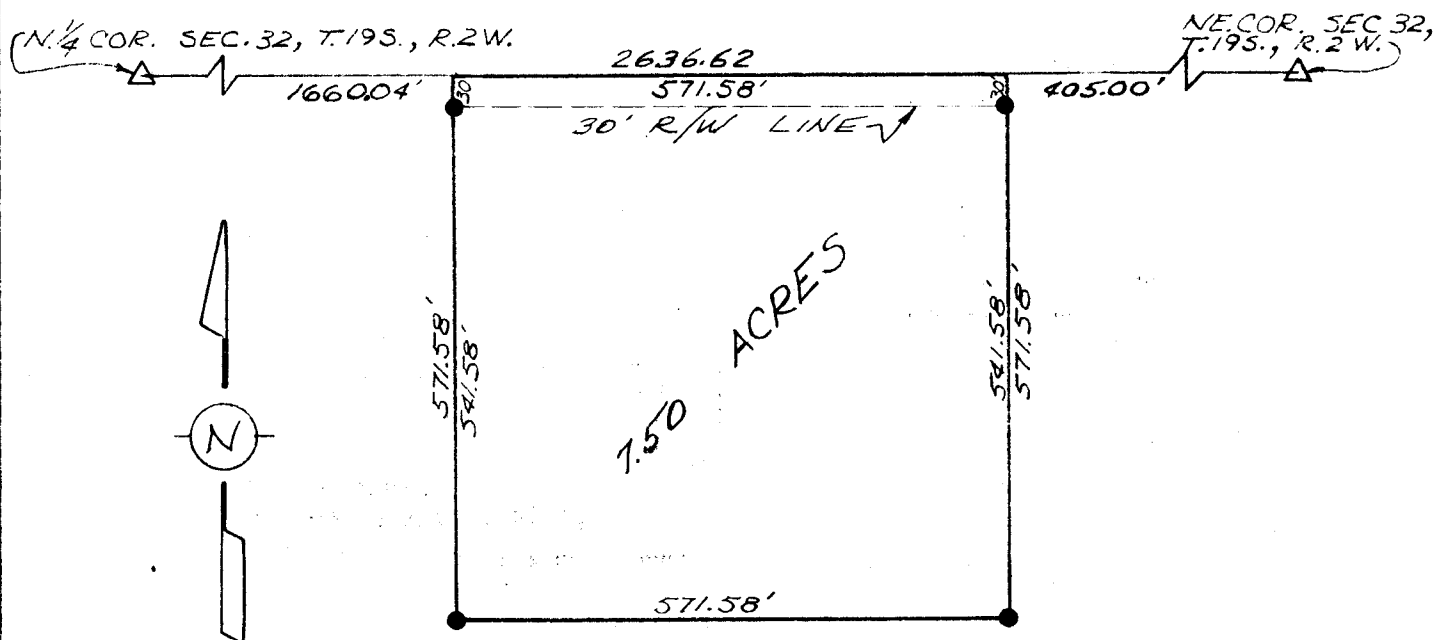


Survey for: Larry Peel
By: Garber Surveying Service
217 E. First Ave., Suite 9
Hutchinson, Kansas 67501

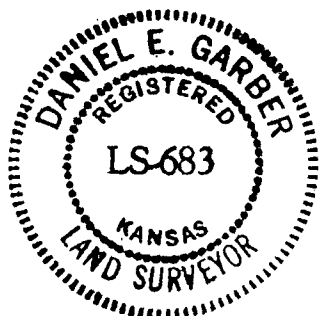
DESCRIPTION: A tract in the N.E. $\frac{1}{4}$ of Section 32, T.19 S., R.2 W.
of the 6th P.M. in McPherson County, Kansas more particularly
described on the attached sheet.



Scale: 1"=200'

△- Gov't. Corner Found
●- Iron Pin Set

I hereby certify this plat to be a true,
correct and complete representation of the property
described above and on the attached sheet, as
surveyed by me, this 6th day of June, 1979.



Daniel E. Garber