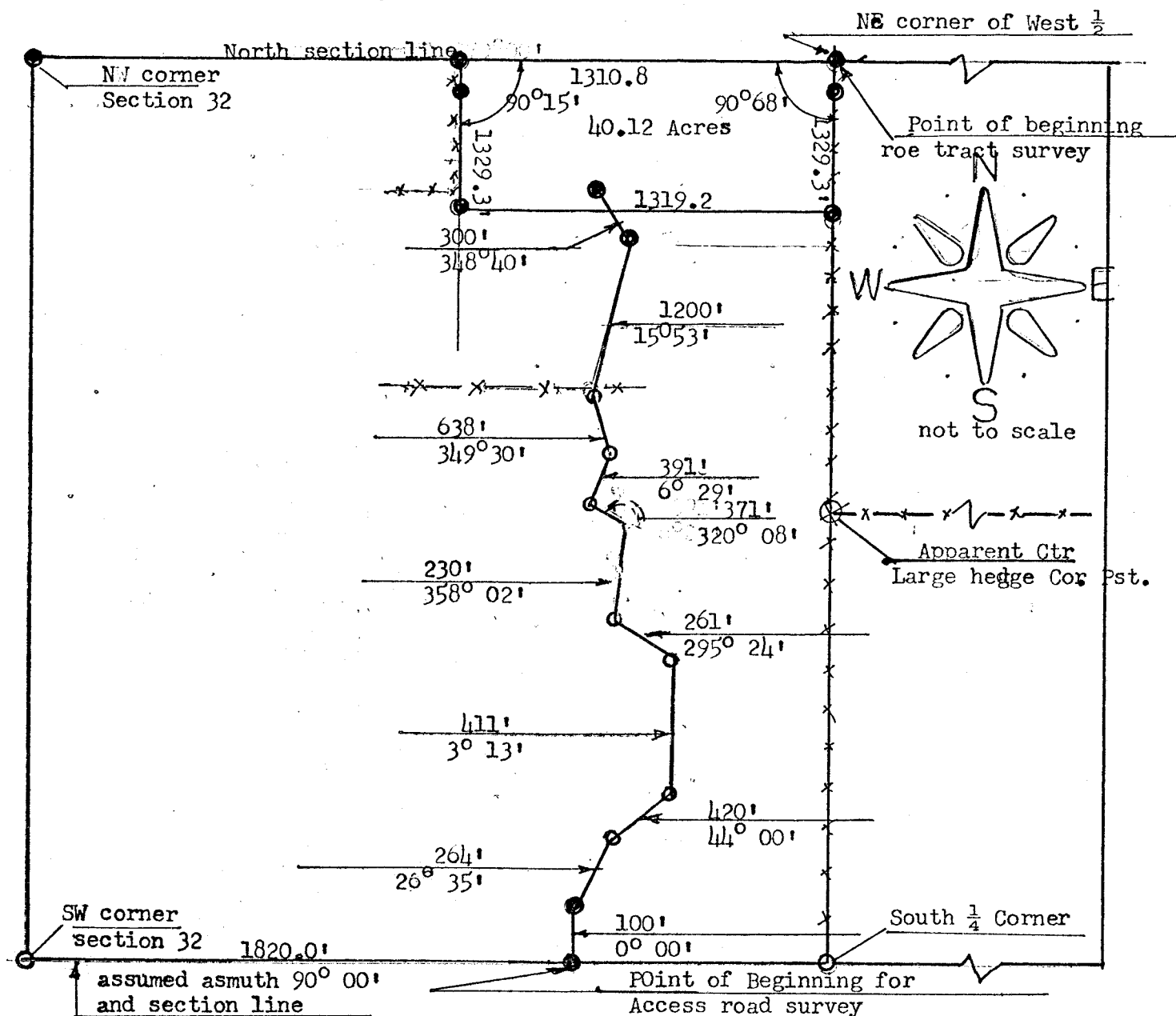


A Survey in the w $\frac{1}{2}$ Section 32, T18S, R1W.
for Access road Alinement and 40.12 Acre
tract.



Legend:

Pins found 0 fence line — * * *

Pins Set 0

Nails Set 0

This survey called for by George Toews Canton Kansas.

STATE OF KANSAS)
COUNTY OF MCPHERSON) SS

I Francis R Rankin, a licensed professional engineer in the state of Kansas Hereby certify that a survey was made under my supervision described as follows:

ACCESS ROAD CENTER LINE, E.

Beginning at the SW corner of Section 32, T18S, R1W thence east on section line on an assumed Azimuth of 90° 00'; a distance of 1820.0'; thence North on azimuth 0° 00' a distance of 100.0'; thence on azimuth of 26° 35' a distance of 264'; thence on azimuth of 44° 00' a distance of 420'; thence on Azimuth of 3° 13' a distance of 411'; thence on azimuth of 295° 24' a distance of 261'; thence on azimuth of 358° 02' a distance of 230'; thence on azimuth of 320° 08' a distance of 371'; thence on azimuth of 6° 29' a distance of 391'; thence on azimuth of 349° 30' a distance of 638' to a point just north of pasture fence; thence on azimuth 15° 53' a distance of 1200'; thence on azimuth of 348° 40' a distance of 300' and to a point within the 40.12 acre tract described herein. Said right of way for said access easement to be 16 $\frac{1}{2}$ feet either side of the above described center line and being 33.0' in total width.

40.12 ACRE TRACT DESCRIBED AS FOLLOWS:

Beginning at the North East corner of the west 1/2 of Section 23, T18S, R1W, thence west along the north section line a distance of 1310.8 feet; thence south on an interior angle of 90°15' a distance of 1329.3 feet; thence east 1319.17 feet east to the east line of the west 1/2 of said section; thence North along said east line a distance of 1329.3 feet to the point of beginning. Said tract contains 40.12 Acres more or less.

I, F.R. Rankin, certify the above to be a representative plat of said described surveys, and that all lines, angles and measurements are correct so far as it is known to me.

Signed

F. R. Rankin
F. R. Rankin P.E.
KANSAS
PROFESSIONAL ENGINEER

April 9 1977 at McPherson Kansas