

COMMISSIONERS:

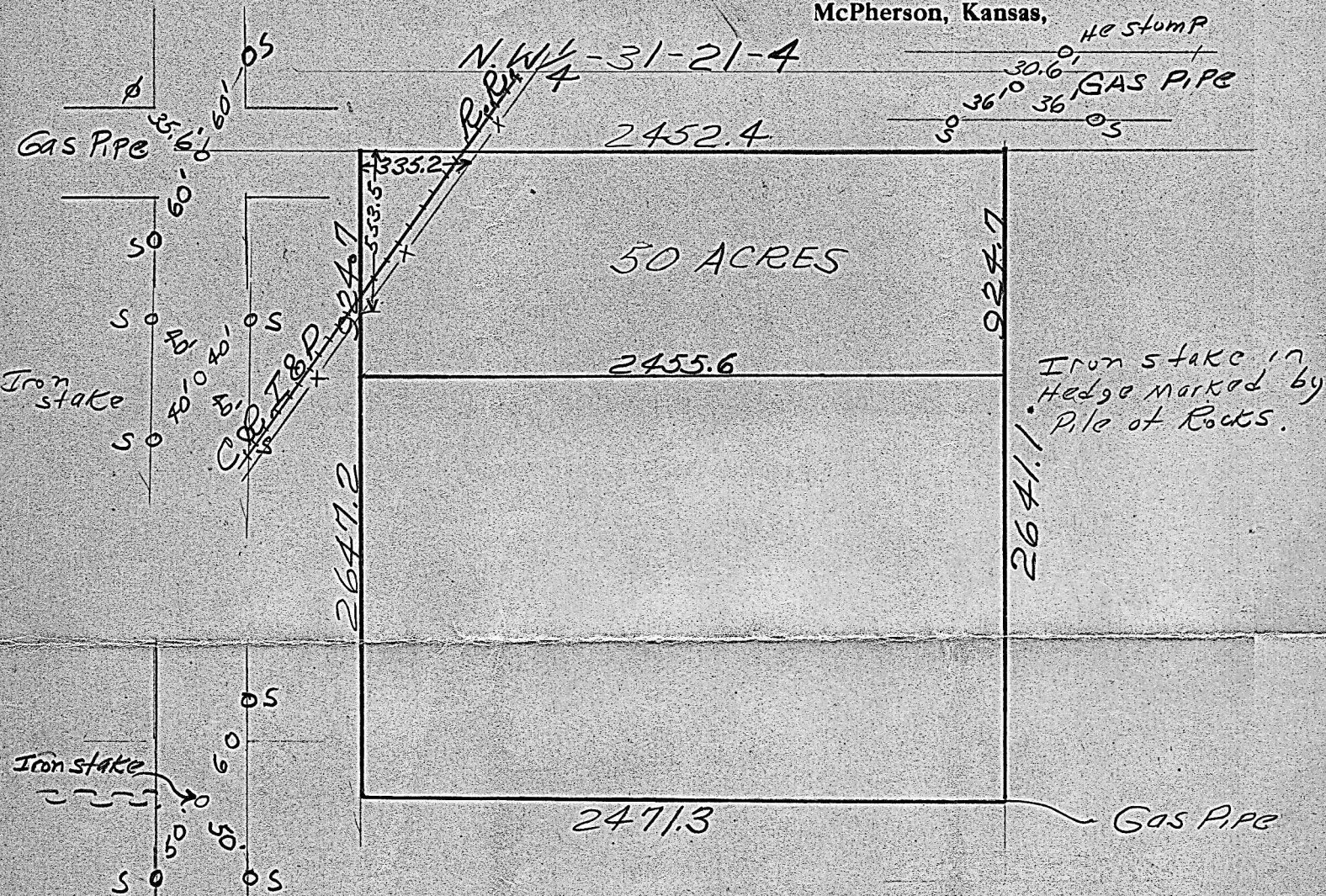
C. R. JOHNSON, McPherson  
EMIL BILLING, Lindsborg  
H. H. GOERTZEN, Inman

# HIGHWAY DEPARTMENT

McPherson County, Kansas

GUY HALL  
COUNTY ENGINEER

McPherson, Kansas,



This is to certify that the above is a true plat of a survey made by me March 22, 1935, for G. F. Toeve to locate the north fifty acres of the NW 1/4 of Sec 31-21-4, said fifty acres to be exclusive of the railroad right of way and the tract lying north and west of the railroad. The corners are marked as shown above.

Guy Hall, County Engineer.



MICROFILM