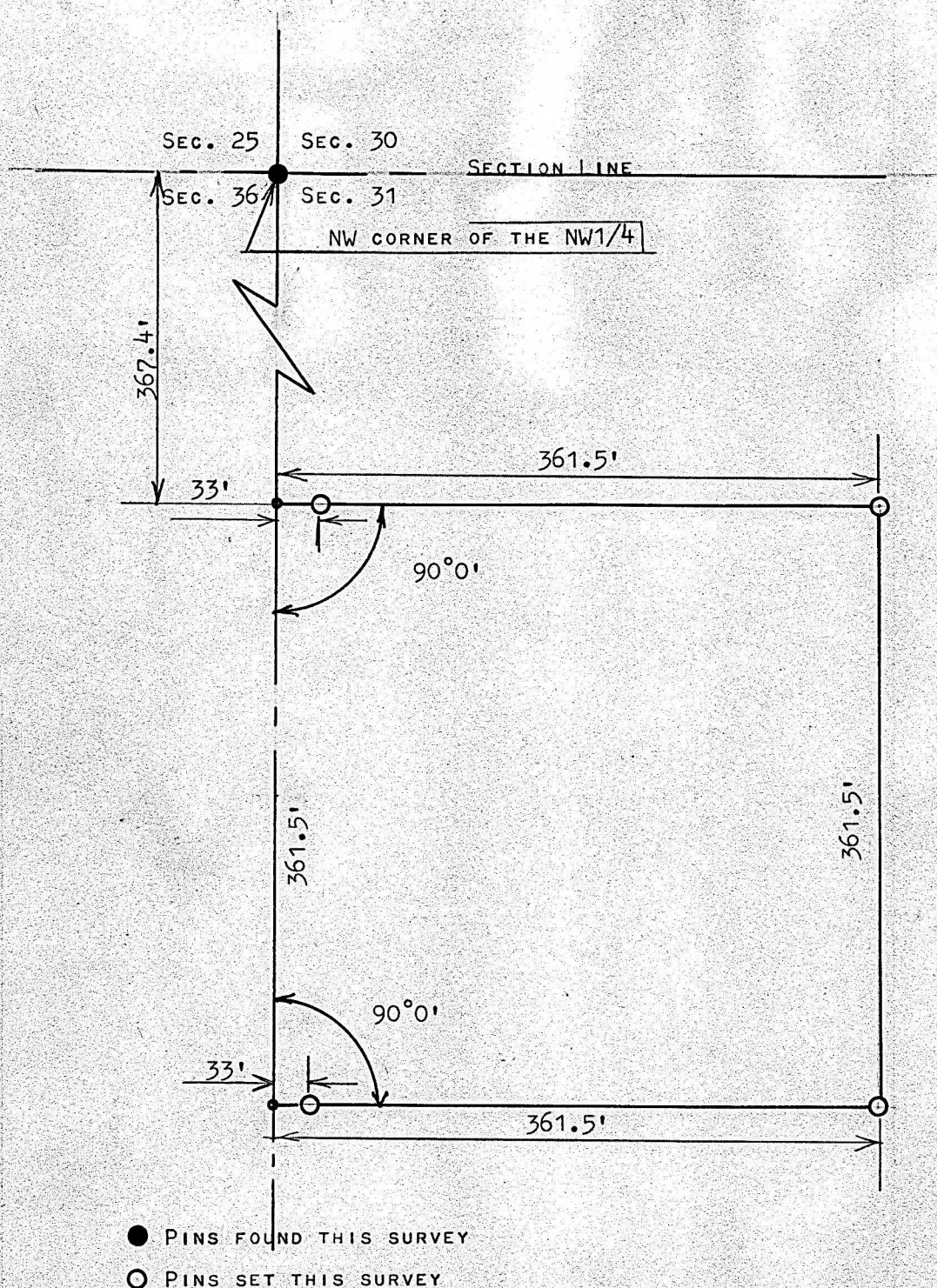


A SURVEY OF A TRACT OF LAND IN THE
NW1/4, SECTION 31, T21S, R2W,
MCPHERSON, COUNTY
KANSAS



STATE OF KANSAS)
MCPHERSON COUNTY) SS

I, FRANCIS RANKIN, PROFESSIONAL ENGINEER OF THE STATE OF KANSAS DO HEREBY CERTIFY THAT UNDER MY SUPERVISION A SURVEY WAS MADE OF A TRACT OF LAND IN THE NW1/4, SECTION 31, T21S, R2W OF THE 6TH P.M. AND DESCRIBED AS FOLLOWS;

COMMENCING AT A POINT 367.4 FEET SOUTH OF THE NW CORNER OF THE NW1/4, OF SAID SECTION 31, T21S, R2W FOR PLACE OF BEGINNING; THENCE RIGHT ANGLE EAST 361.5 FEET; THENCE SOUTH PARALLEL WITH SECTION LINE 361.5 FEET; THENCE WEST TO SECTION LINE 361.5 FEET; THENCE NORTH ON SECTION LINE 361.5 FEET TO PLACE OF BEGINNING, SAID TRACT OF LAND CONTAINS 3.0 ACRES MORE OR LESS, AND THAT THE ABOVE PLAT IS A TRUE EXHIBIT OF SAID SURVEY AS FAR AS IT IS KNOWN TO ME. SURVEY CALLED FOR BY PAUL P. GOERING

SIGNED THIS 5 DAY OF AUGUST, 1968

FRANCIS RANKIN
PROFESSIONAL ENGINEER
MCPHERSON, KANSAS



MICROFILM