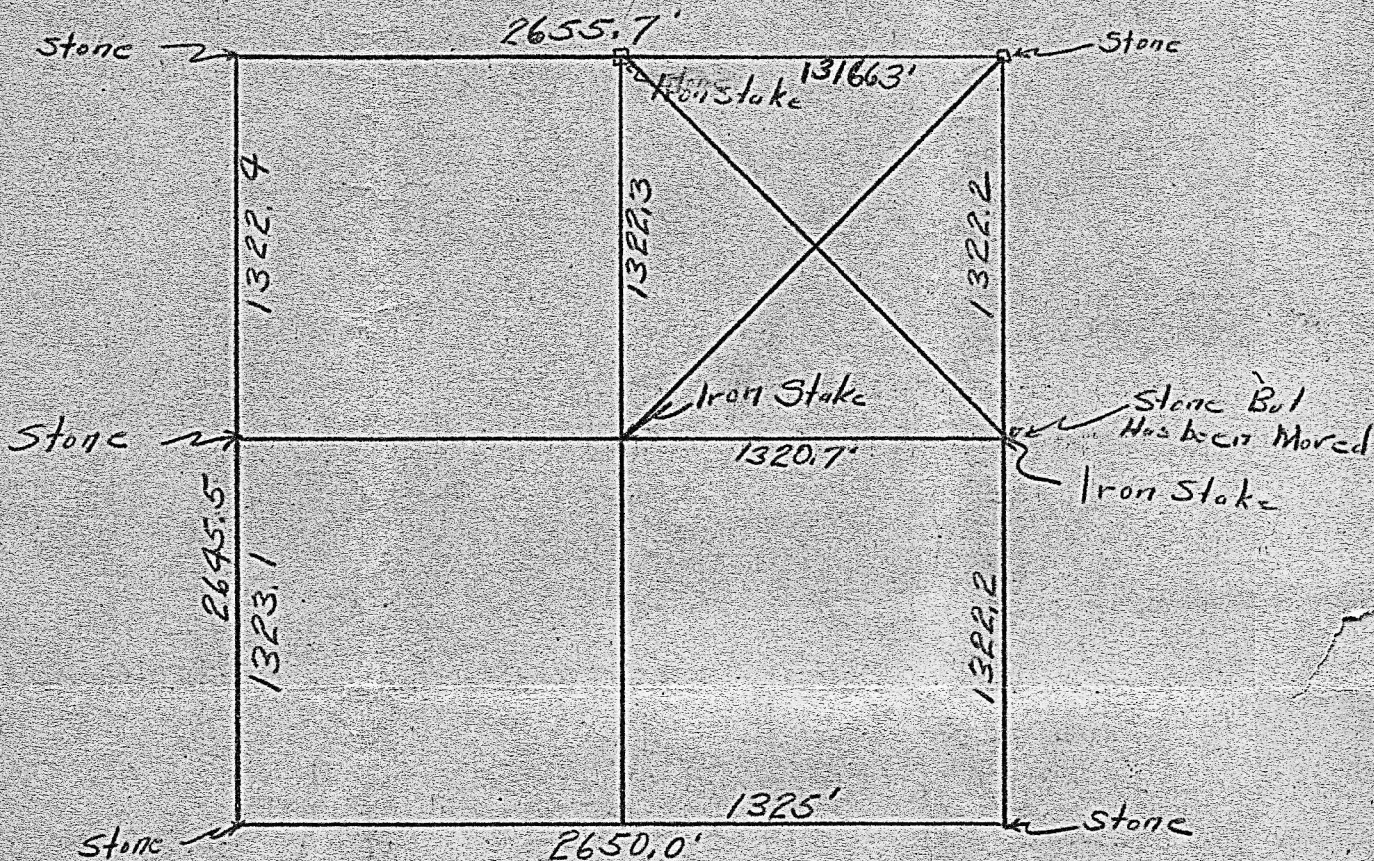


S.W. 1/4 Sec. 30-20-4



The above is a plat of a survey made under my supervision for C M Toeys to locate the NE $\frac{1}{4}$ SW $\frac{1}{4}$ Sec 30-20-4. The old stone at the center of the section was found and a stone placed by Bert Rowland at the SE Cor of the forty was also found but this had evidently been moved so a steel rod was placed at the correct location. Steel rods were placed at the two corners on the west.

Dec 29, 1934.

Guy Hall, County Engineer.

MICROFILM