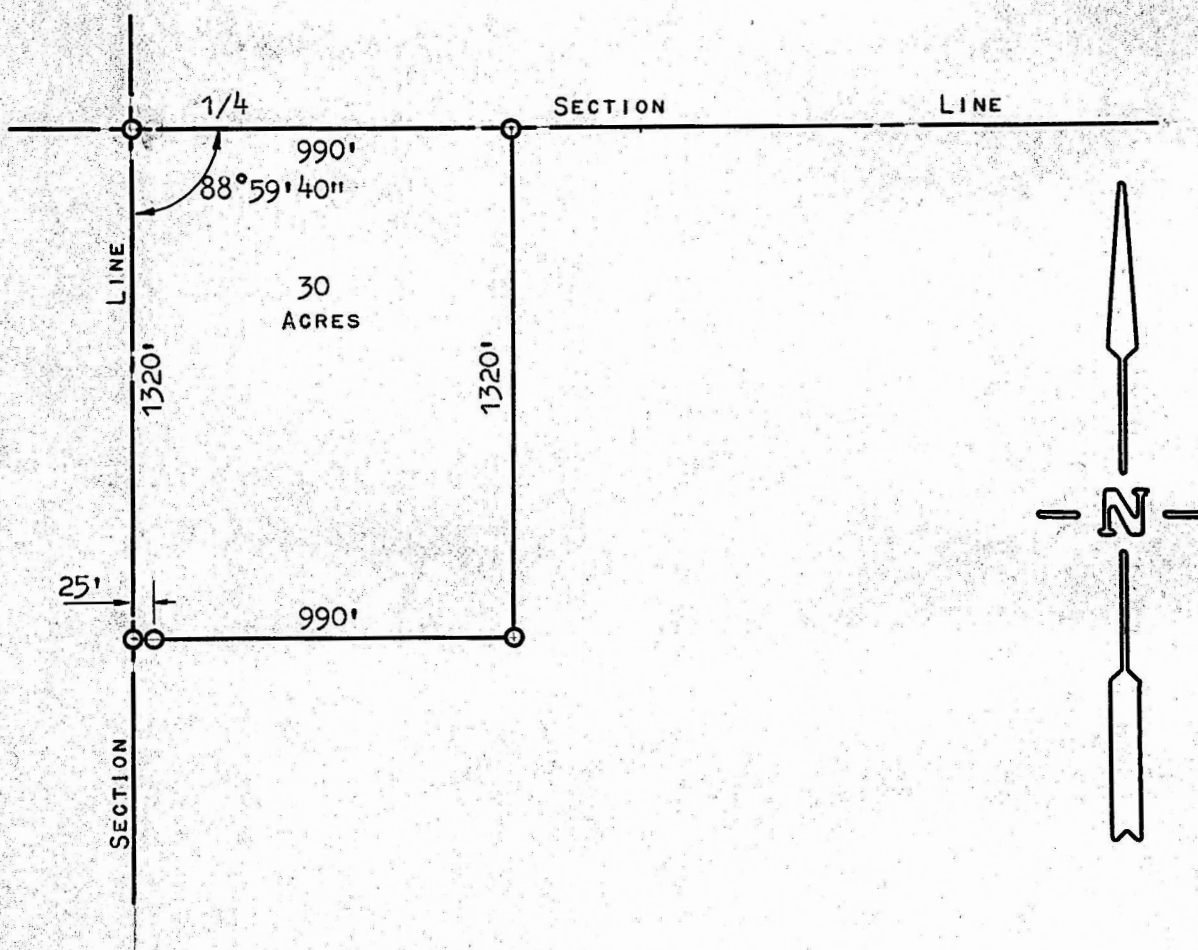


A SURVEY OF A TRACT OF LAND IN THE  
SW1/4 OF SECTION 31, T19S - R4W



○ PINS SET THIS SURVEY

STATE OF KANSAS )  
COUNTY OF McPHERSON )<sub>SS</sub>

I, F. R. RANKIN, COUNTY ENGINEER OF McPHERSON CO., KANSAS,  
DO HEREBY CERTIFY THAT UNDER MY SUPERVISION A SURVEY WAS MADE OF  
A TRACT OF LAND IN THE SW1/4 OF SECTION 31, T19S - R4W OF THE 6TH  
P.M. AND DESCRIBED AS FOLLOWS:

BEGINNING AT THE NW CORNER OF SAID SW1/4 OF SECTION 31,  
THENCE EAST, ON 1/4 SECTION LINE, 990 FEET; THENCE SOUTH,  
PARALLEL WITH THE SECTION LINE, 1320 FEET; THENCE WEST,  
PARALLEL WITH THE 1/4 SECTION LINE, 990 FEET; THENCE  
NORTH, ON SECTION LINE, 1320 FEET TO THE PLACE OF BEGINNING.

SAID TRACT CONTAINS 30 ACRES AND THE ABOVE PLAT IS A TRUE EXHIBIT  
OF SAID SURVEY AS FAR AS IT IS KNOWN TO ME.

SURVEY CALLED FOR BY HOWARD SAWYER.

SIGNED ON THIS 16 DAY OF APRIL, 1973.

*F. R. Rankin*  
F. R. RANKIN  
COUNTY ENGINEER  
McPHERSON CO., KANSAS



MICROFILM