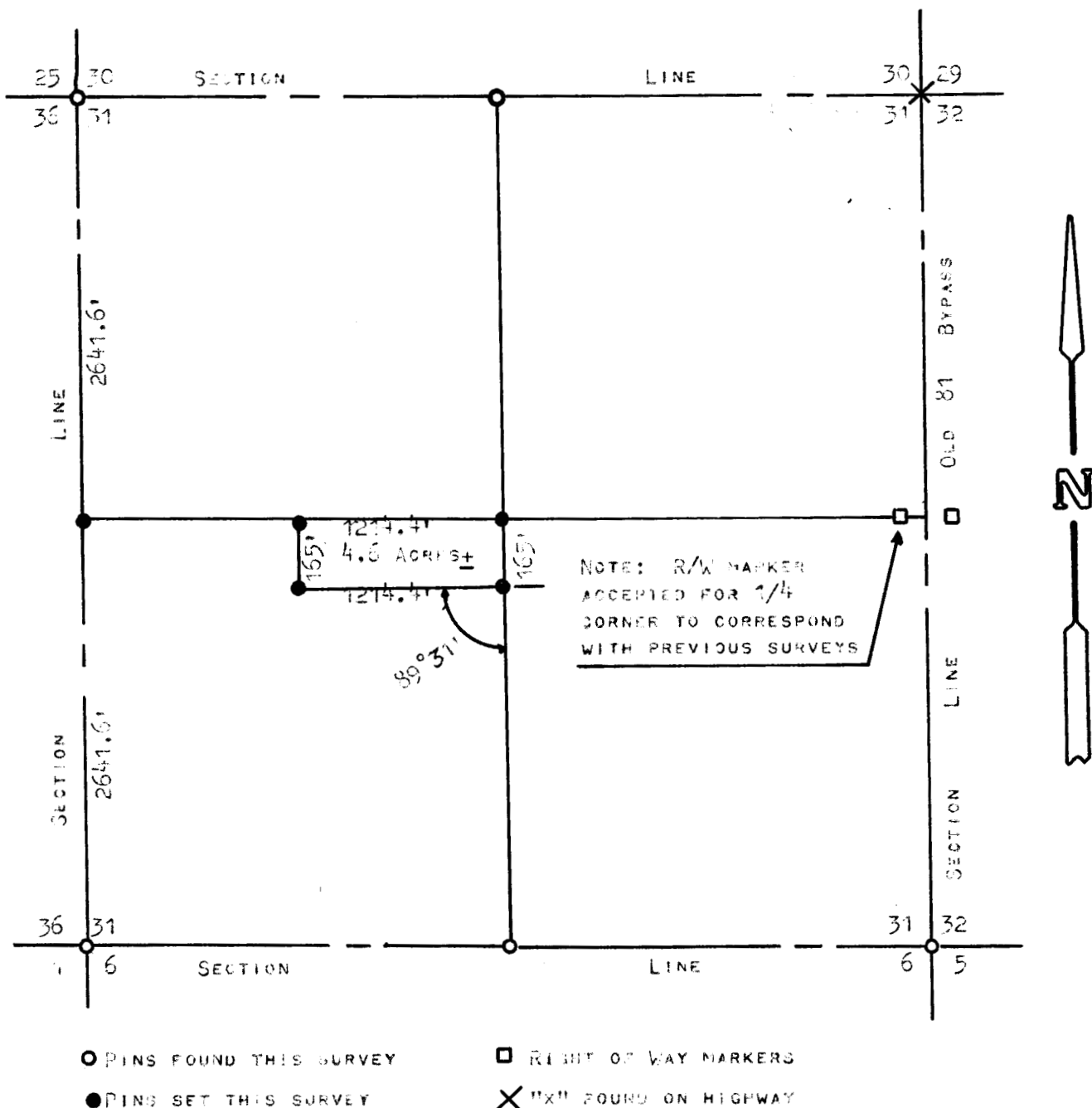


A SURVEY OF A TRACT OF LAND
IN THE SW 1/4, SECTION 31,
T19S, R3W



STATE OF KANSAS)
COUNTY OF McPHERSON) SS

I, FRANCIS RANKIN, COUNTY ENGINEER OF McPHERSON COUNTY, KANSAS DO HEREBY
THAT UNDER MY SUPERVISION A SURVEY WAS MADE OF A TRACT OF LAND IN THE SW 1/4
OF SECTION 31, T19S, R3W AND DESCRIBED AS FOLLOWS:

BEGINNING AT THE NE CORNER OF THE SW 1/4 OF SECTION 31, T19S, R3W,
THENCE WEST 1214.4 FEET, THENCE SOUTH 165 FEET, THENCE EAST 1214.4
FEET, THENCE NORTH 165 FEET TO POINT OF BEGINNING.

SAID TRACT CONTAINS 4.6 ACRES MORE OR LESS. I CERTIFY THAT THE ABOVE PLAT IS
A TRUE EXHIBIT OF SAID SURVEY AS FAR AS IT IS KNOWN TO ME.

SURVEY CALLED FOR BY McPHERSON COUNTY

SIGNED THIS 25 DAY OF JUNE, 1973.

