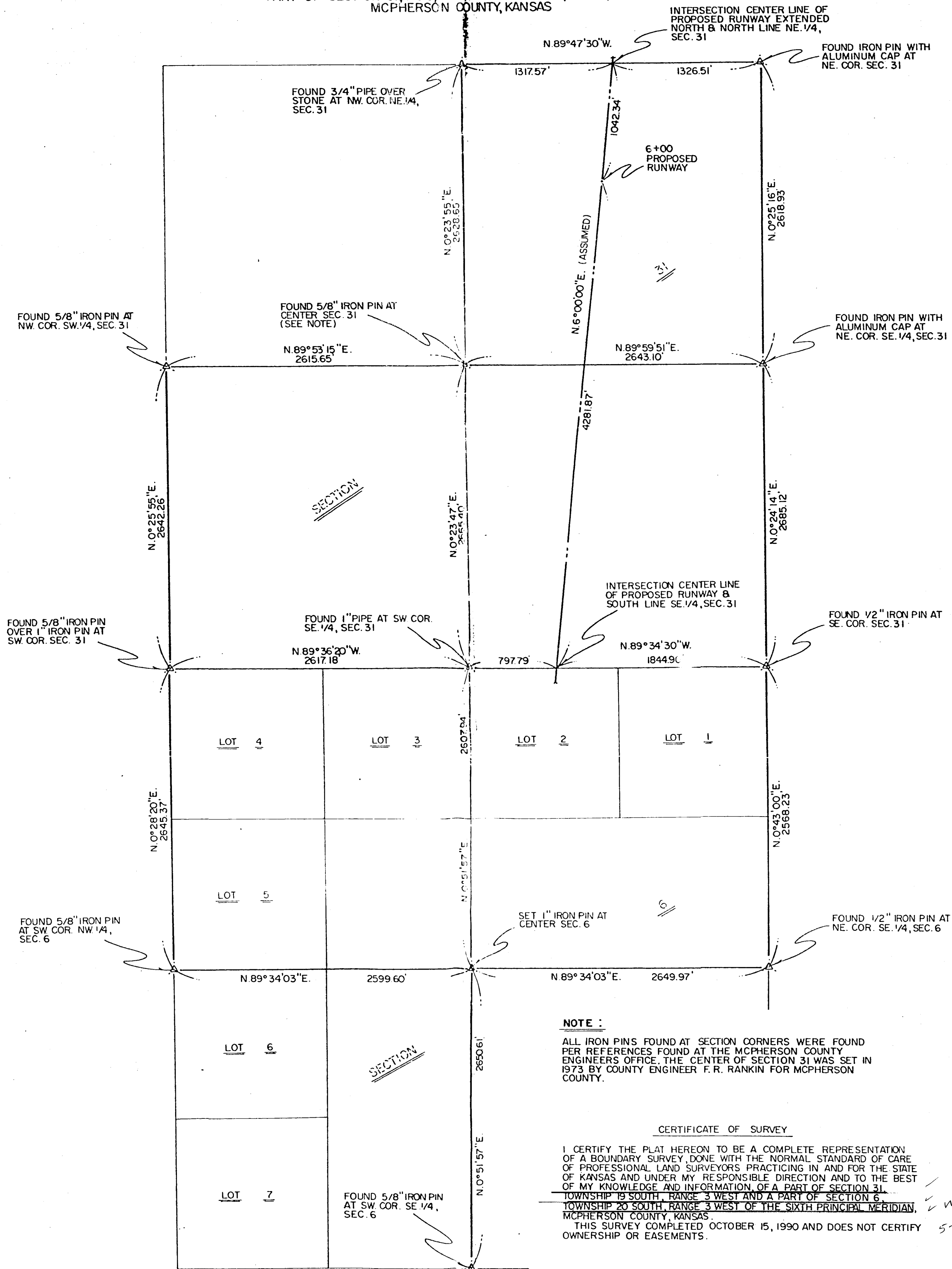


BOUNDARY SURVEY

PART OF SECTION 31, T19S, R3W & SECTION 6, T20S, R3W
MCPHERSON COUNTY, KANSAS

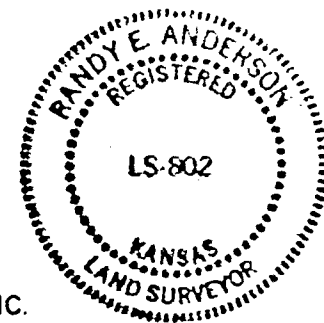
SCALE
1" = 600'



PLAT PREPARED FOR:

"MULLER, SIRHALL & ASSOC. INC."

AIRPORT CONSULTANTS
AURORA, COLORADO



Randy E. Anderson
RANDY E. ANDERSON

R.L.S. 802

DATE: OCTOBER 15, 1990

CENTRAL KANSAS SURVEYING & MAPPING, INC.

90-586