

Main Office
2908 North Plum Street
Hutchinson, KS 67502
Office: (620) 665-7032
Fax: (620) 663-7401



Garber Surveying Service, P.A.

Branch Offices
Manhattan 785-320-4810
McPherson 620-241-4441
Newton 316-283-5053
Salina 785-404-6302
Wichita 316-260-9933

SURVEY FOR: HILARY CONDREN

Project No. G2024-862

DESCRIPTION:

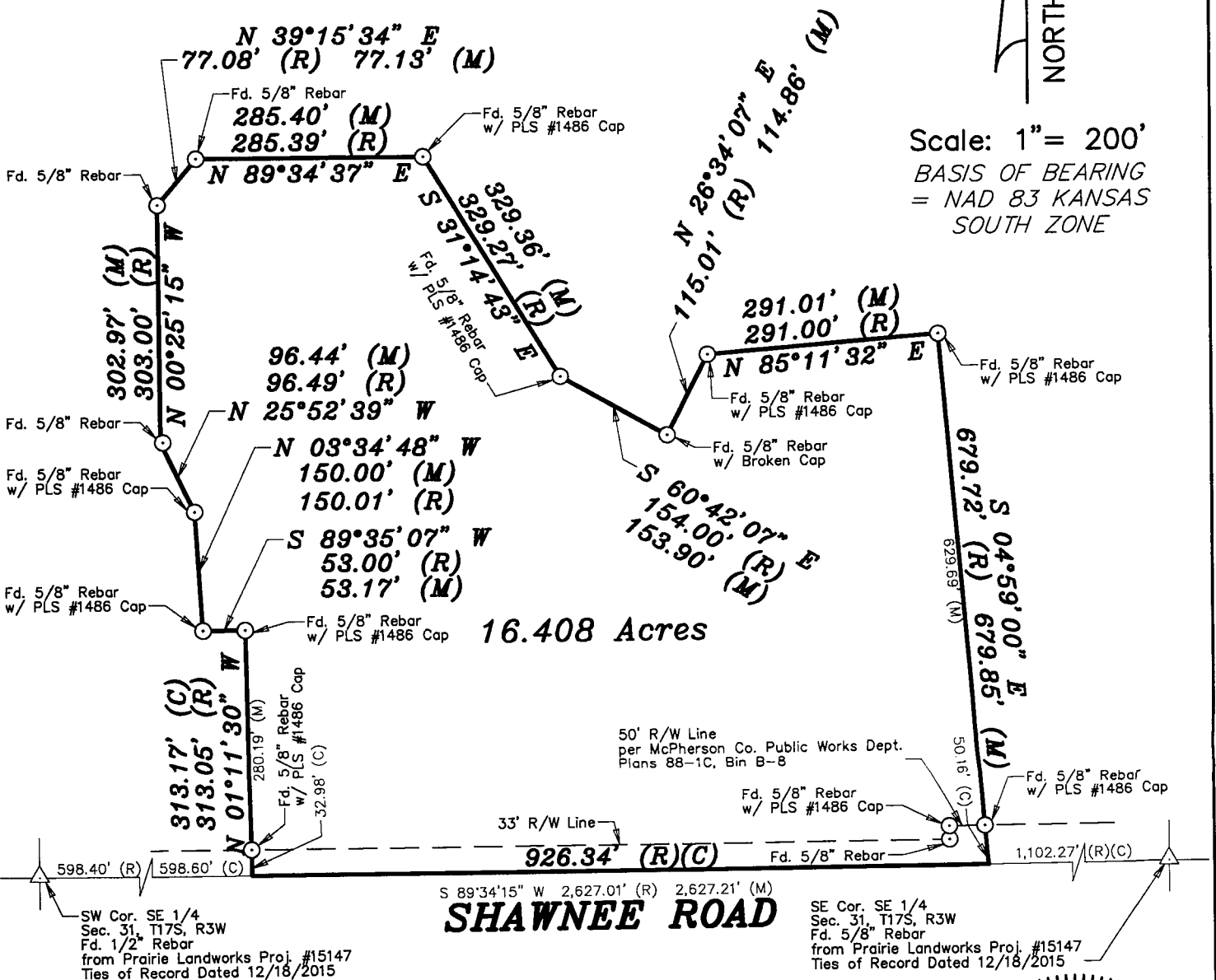
DESCRIPTION OF RECORD (Bk. 667, Pg. 64081):

A portion of the Southeast Quarter (SE 1/4) of Section Thirty-One (31), Township Seventeen (17) South, Range Three (3) West of the Sixth Principal Meridian, McPherson County, Kansas, more particularly described as follows:

Commencing at the Southeast corner of the SE 1/4 of Section 31, Township 17 South, Range 3 West; thence South 89 degrees 34 minutes 19 seconds West 1102.27 feet along the South line of said SE 1/4 to the point of beginning; thence continuing South 89 degrees 34 minutes 19 seconds West 926.34 feet; thence North 1 degrees 09 minutes 53 seconds West 313.05 feet; thence South 89 degrees 34 minutes 33 seconds West 53.00 feet; thence North 3 degrees 36 minutes 43 seconds West 150.01 feet; thence North 25 degrees 53 minutes 03 seconds West 96.49 feet; thence North 0 degrees 25 minutes 36 seconds West 303.00 feet; thence North 39 degrees 17 minutes 24 seconds East 77.08 feet; thence North 89 degrees 34 minutes 23 seconds East 285.39 feet; thence South 31 degrees 14 minutes 47 seconds East 329.27 feet; thence South 60 degrees 41 minutes 07 seconds East 154.00 feet; thence North 26 degrees 31 minutes 00 seconds East 115.01 feet; thence North 85 degrees 13 minutes 47 seconds East 291.00 feet; thence South 4 degrees 58 minutes 16 seconds East 679.72 feet to the point of beginning. Subject to public road.

LEGEND

- △ - Sectional Monument Found
- - Survey Monument Found
- (C) - Calculated
- (M) - Measured
- (R) - Record Measurement (Bk. 667, Pg. 64081)



DATE OF FIELD WORK: December 2, 2024

SURVEYOR'S CERTIFICATE:

I hereby certify this plat to be a true, correct and complete representation of the property described above as surveyed under my supervision.
Dated: December 9, 2024

Copyright © 2024 Garber Surveying Service, P.A.

Daniel E. Garber, PS #683

