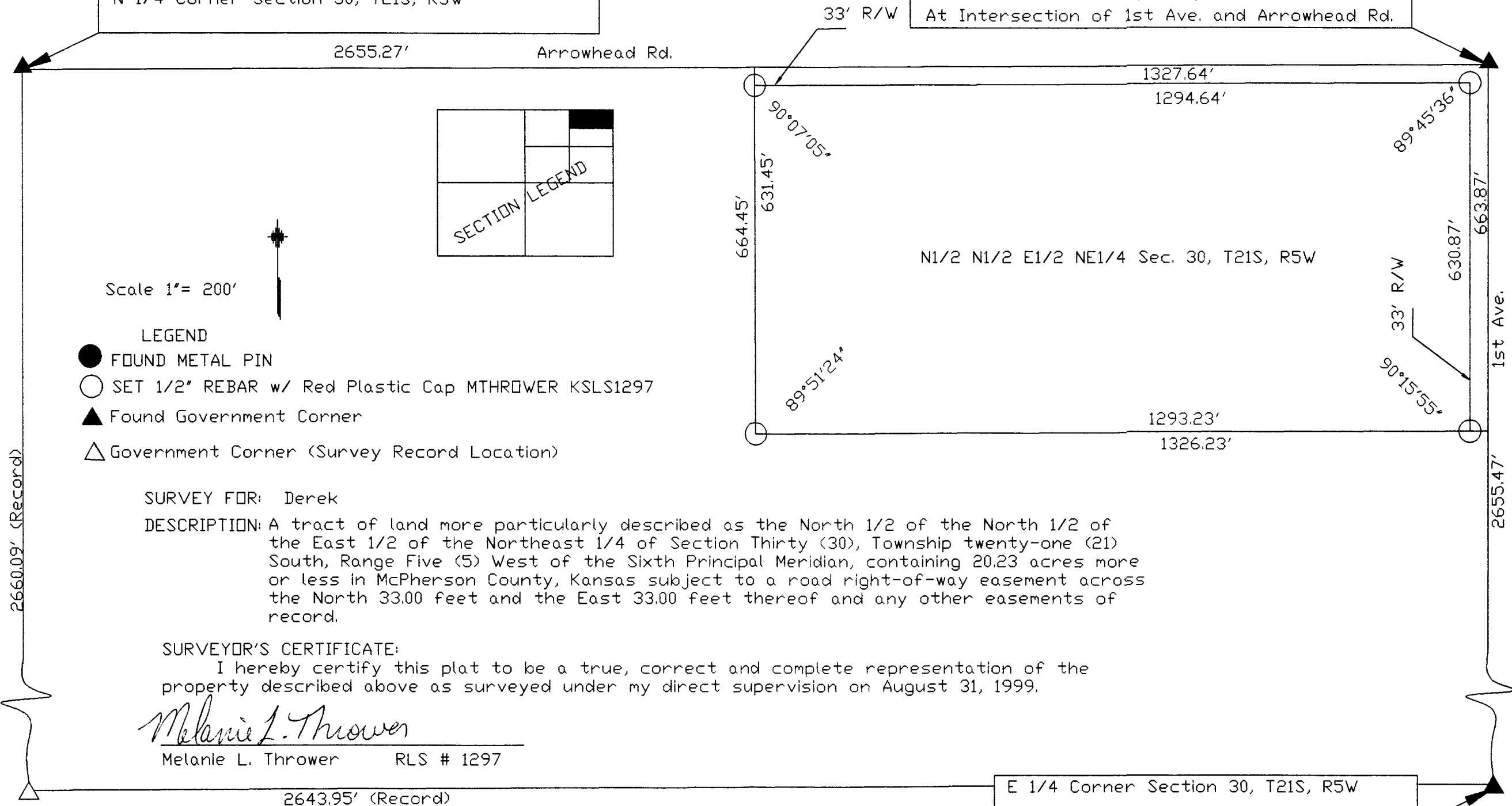


Found 5/8 Rebar 6" below Gravel Surface  
N 1/4 Corner Section 30, T21S, R5W

Found 1/2" Rebar 6" below Gravel Surface  
NE Corner Section 30, T21S, R5W  
At Intersection of 1st Ave. and Arrowhead Rd.



**Melanie L. Thrower, P.E., L.S.**  
P.O. Box 662  
McPherson, Kansas 67460  
316-241-0950 Fax 316-241-5086