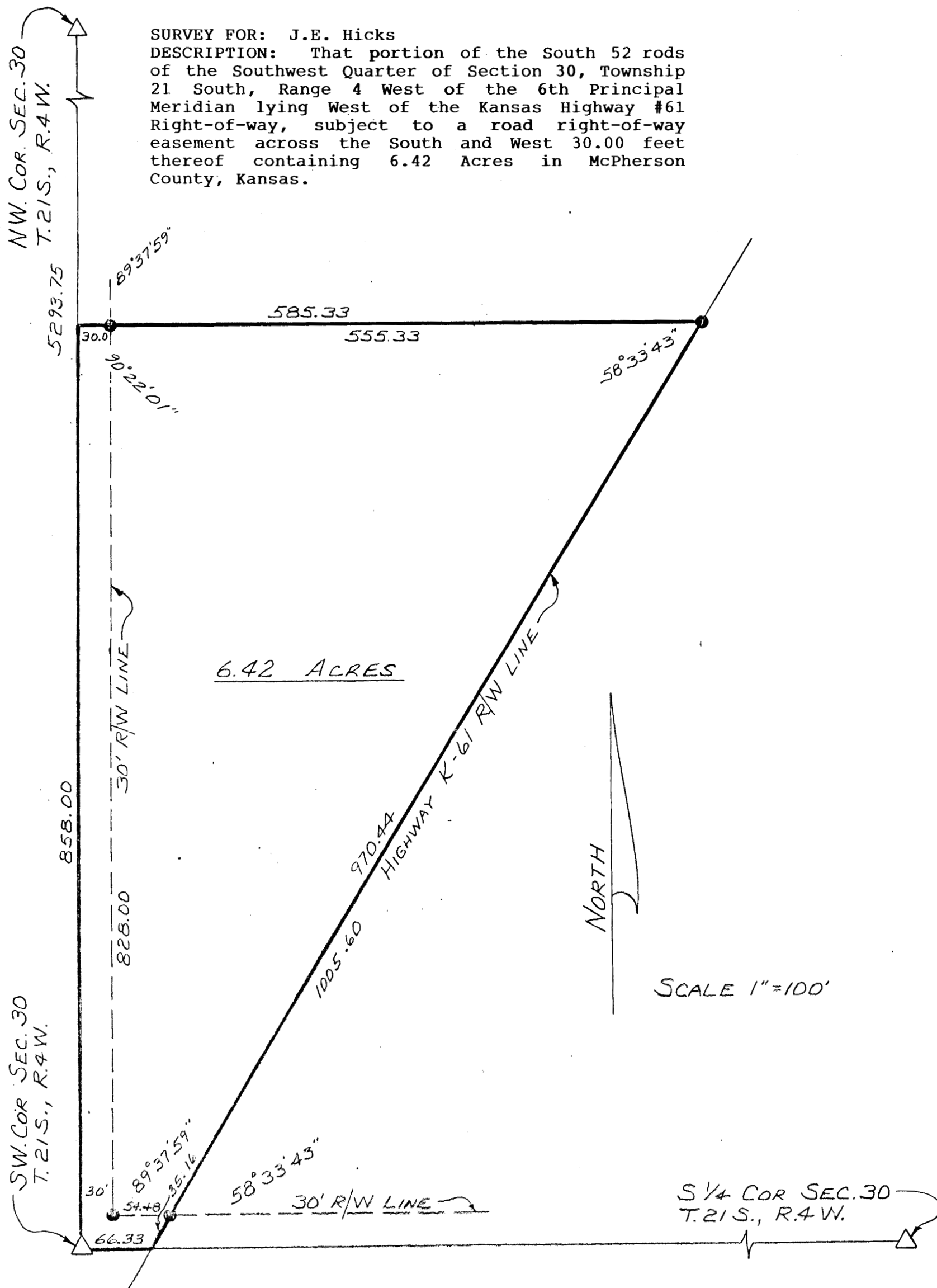


**Garber
Surveying Service, P.A.**

217 East 1st, Suite 16 Hutchinson, KS 67501

Proj. No. G86-248



SURVEYOR'S CERTIFICATE:

I hereby certify this plat to be a true, correct and complete representation of the property described above as surveyed under my supervision, this 1st of April, 1987.

Daniel E. Garber RLS #683

