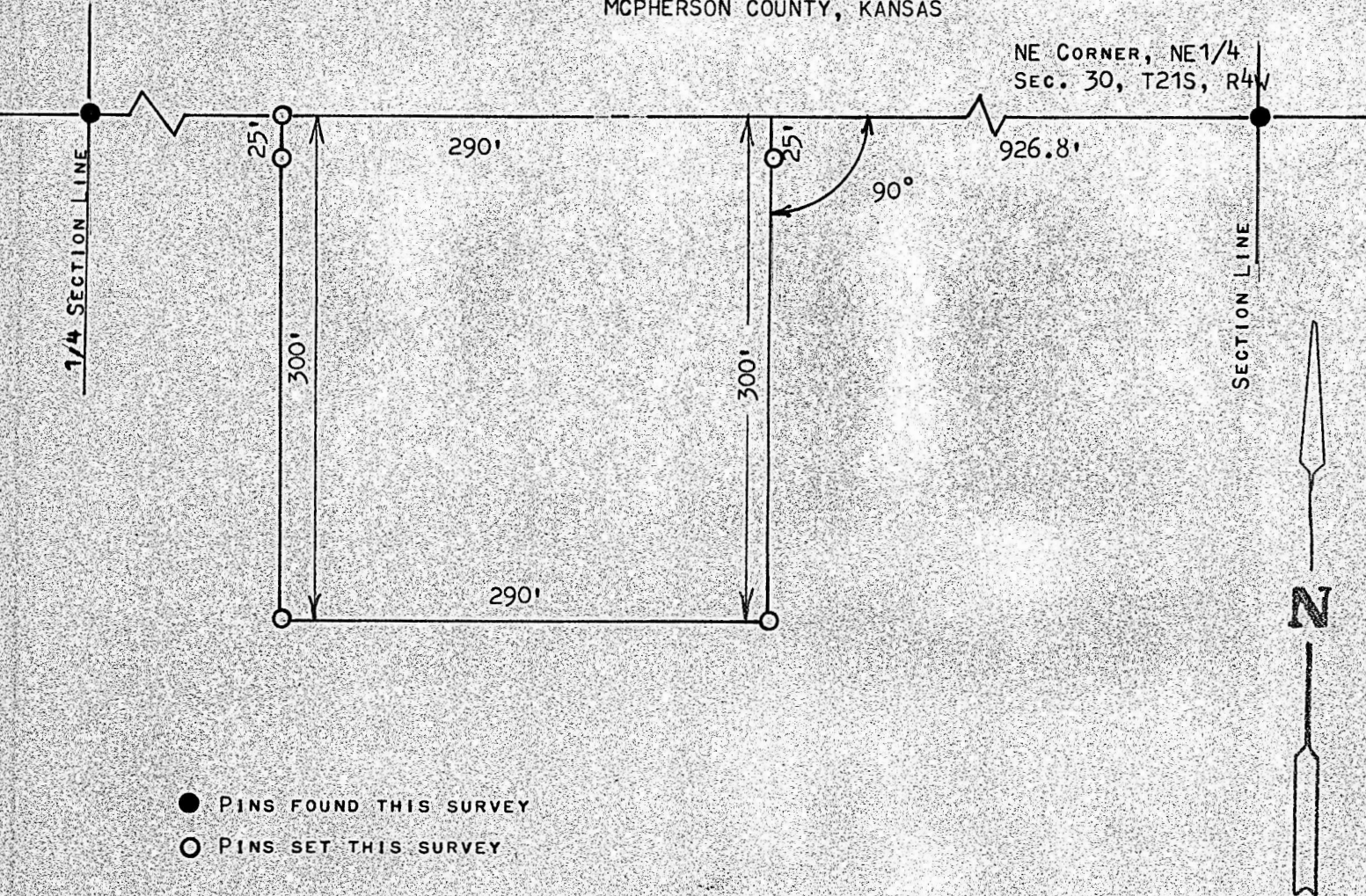


A SURVEY OF A TRACT OF LAND IN THE
NE1/4, SECTION 30, T21S, R4W
MCPHERSON COUNTY, KANSAS



STATE OF KANSAS)
COUNTY OF MCPHERSON) SS

I, FRANCIS RANKIN, PROFESSIONAL ENGINEER OF THE STATE OF KANSAS
DO HEREBY CERTIFY THAT UNDER MY SUPERVISION A SURVEY WAS MADE
OF A TRACT OF LAND IN THE NE1/4, SECTION 30, T21S, R4W OF THE
6TH P.M. AND DESCRIBED AS FOLLOWS:
BEGINNING 926.8 FEET WEST OF THE NE CORNER OF SAID NE1/4, SECTION
30, T21S, R4W; THENCE RIGHT ANGLE SOUTH 300.0 FEET; THENCE WEST
290.0 FEET; THENCE NORTH TO SECTION LINE 300.0 FEET; THENCE EAST
290.0 FEET TO PLACE OF BEGINNING SAID TRACT OF LAND CONTAINS
2.0 ACRES MORE OR LESS, AND THE ACCOMPANYING PLAT IS A TRUE EXHIBIT
OF SAID SURVEY AS FAR AS IT IS KNOWN TO ME.

SURVEY CALLED FOR BY PETE BECKER

SIGNED THIS 15 DAY OF JANUARY, 1973

FRANCIS RANKIN
PROFESSIONAL ENGINEER
MCPHERSON, KANSAS

