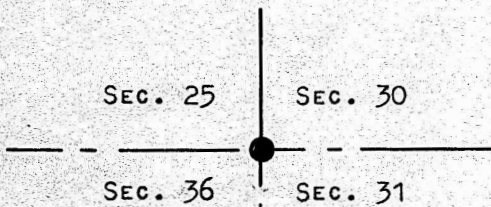
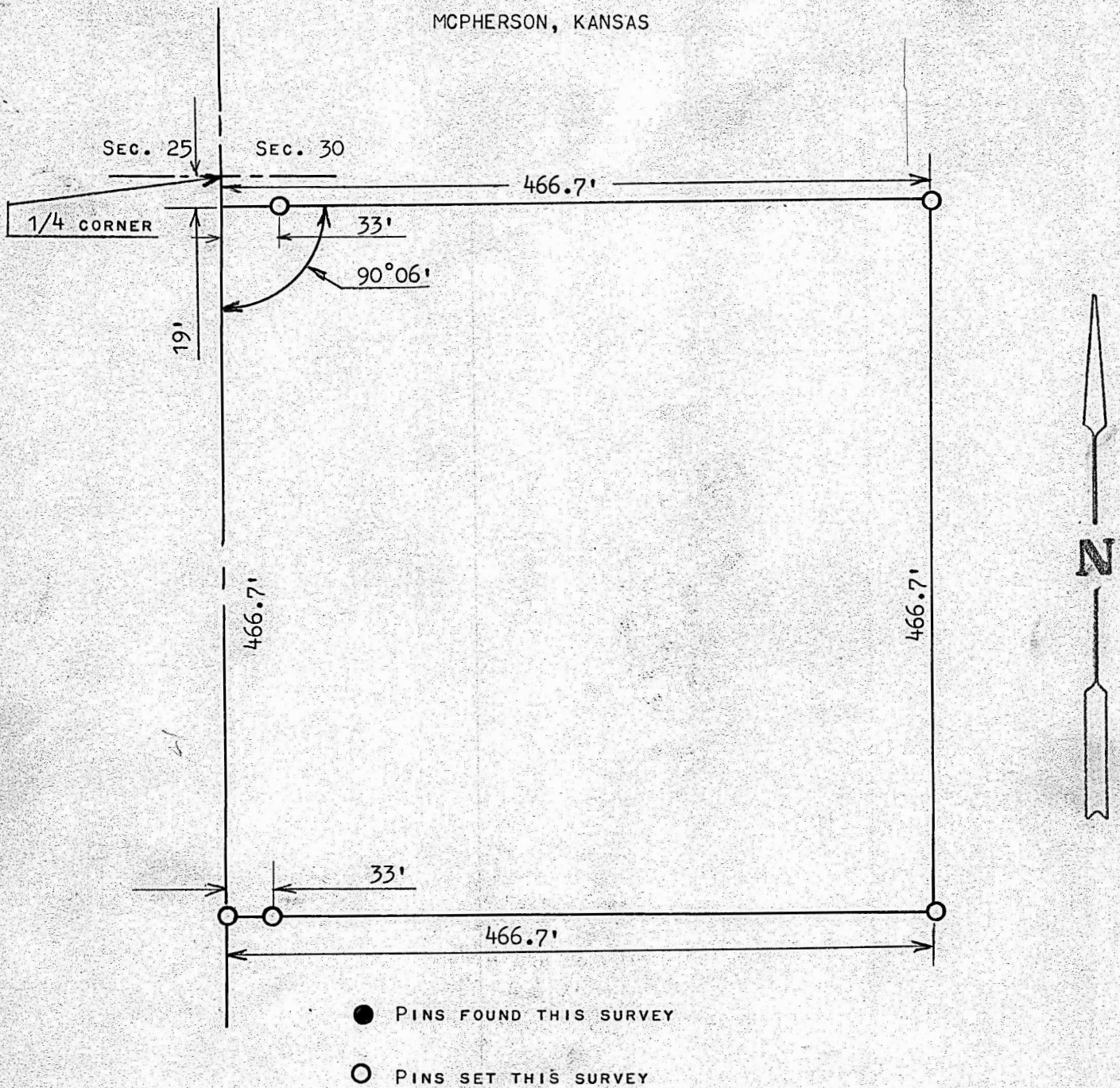


A SURVEY IN THE SW 1/4
SECTION 30, T21S R2W
MCIPHERSON, KANSAS



STATE OF KANSAS)
COUNTY OF MCIPHERSON) SS

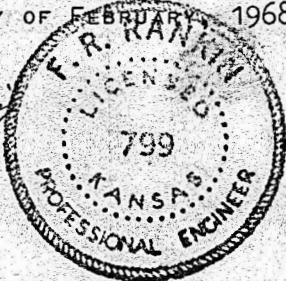
I, FRANCIS RANKIN PROFESSIONAL ENGINEER OF THE STATE OF KANSAS DO HEREBY CERTIFY THAT UNDER MY SUPERVISION A SURVEY WAS MADE IN THE SW 1/4, SECTION 30, T21S R2W OF THE 6TH. P.M. AND DESCRIBED AS FOLLOWS:

BEGINNING 19 FEET SOUTH OF THE NW CORNER OF THE SW1/4 OF SAID SECTION 30, T21S R2W; THENCE EAST AT AN INTERIOR ANGLE OF 90°06' A DISTANCE OF 466.7 FEET; THENCE SOUTH PARALLEL WITH THE SECTION LINE 466.7 FEET; THENCE WEST TO SECTION LINE 466.7 FEET; THENCE NORTH ON SECTION LINE 466.7 FEET, TO PLACE OF BEGINNING, SAID TRACT OF LAND CONTAINS 5.0 ACRES MORE OR LESS, AND THAT THE ACCOMPANYING PLAT IS A TRUE EXHIBIT OF SAID SURVEY AS FAR AS IT IS KNOWN TO ME.

SURVEY CALLED FOR BY VERENE M. GOERING

SIGNED THIS 7 DAY OF FEBRUARY, 1968

Francis Rankin
FRANCIS RANKIN
PROFESSIONAL ENGINEER
MCIPHERSON, KANSAS



MICROFILM