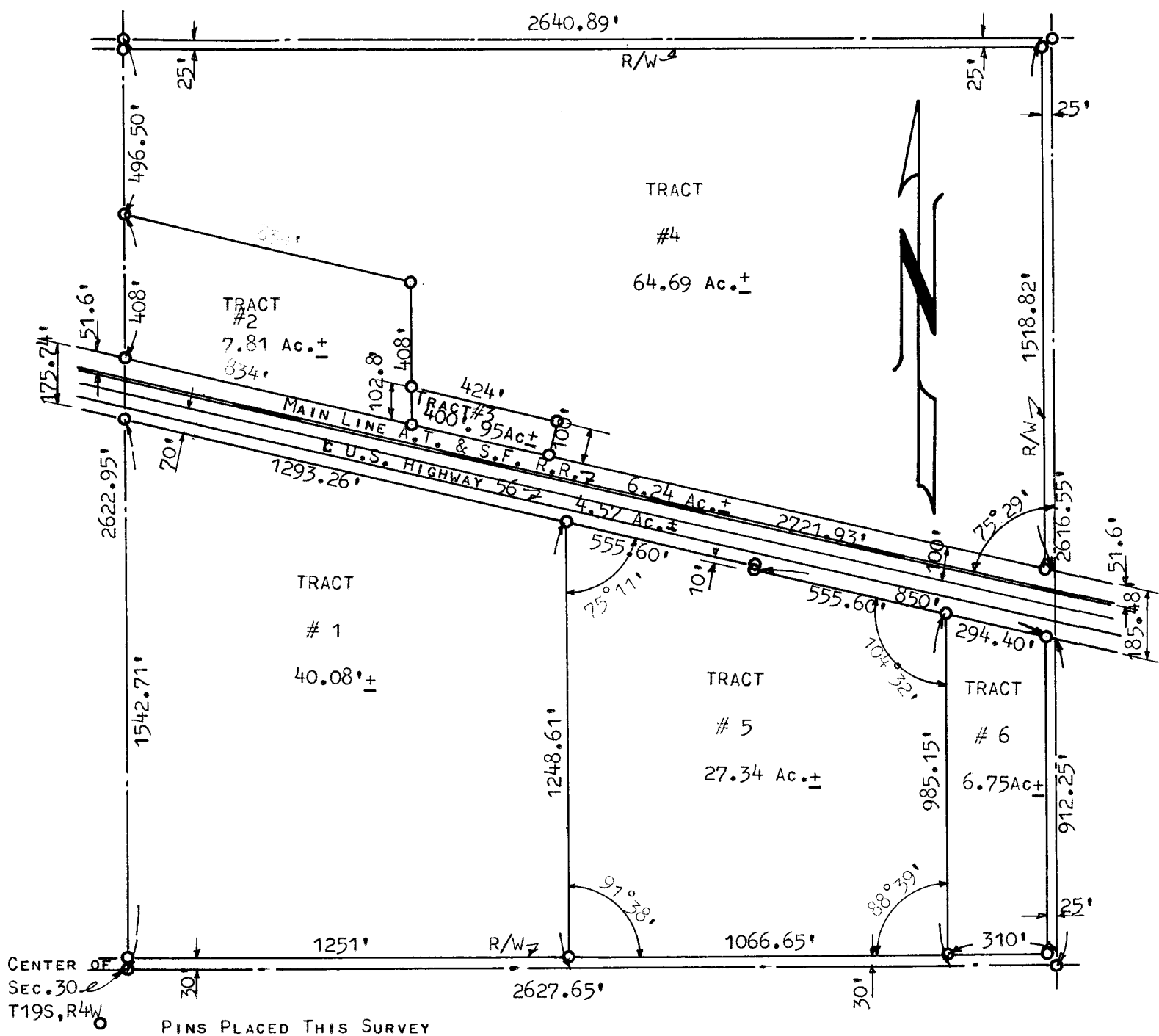


A SURVEY OF THE NE<sup>1</sup>/<sub>4</sub>  
SECTION 30, T19S, R4W



STATE OF KANSAS ) SS  
COUNTY OF McPHERSON)

I FRANCIS D. WAGNER, COUNTY ENGINEER OF McPHERSON COUNTY, KANSAS DO  
HEREBY CERTIFY THAT I DID CAUSE TO BE DONE ON THE 4TH DAY OF DECEMBER,  
1959, A SURVEY OF THE NE<sup>1</sup>/<sub>4</sub> SECTION 30, T19S, R4W OF THE 6TH P.M. AND  
THAT THE ACCOMPANYING PLAT IS A TRUE EXHIBIT OF SAID SURVEY.

MICROFILM

15 DECEMBER, 1959

*Francis D. Wagner*  
FRANCIS D. WAGNER  
COUNTY ENGINEER  
McPHERSON COUNTY