

SECTION LINE AND U.S. 56 H.W.

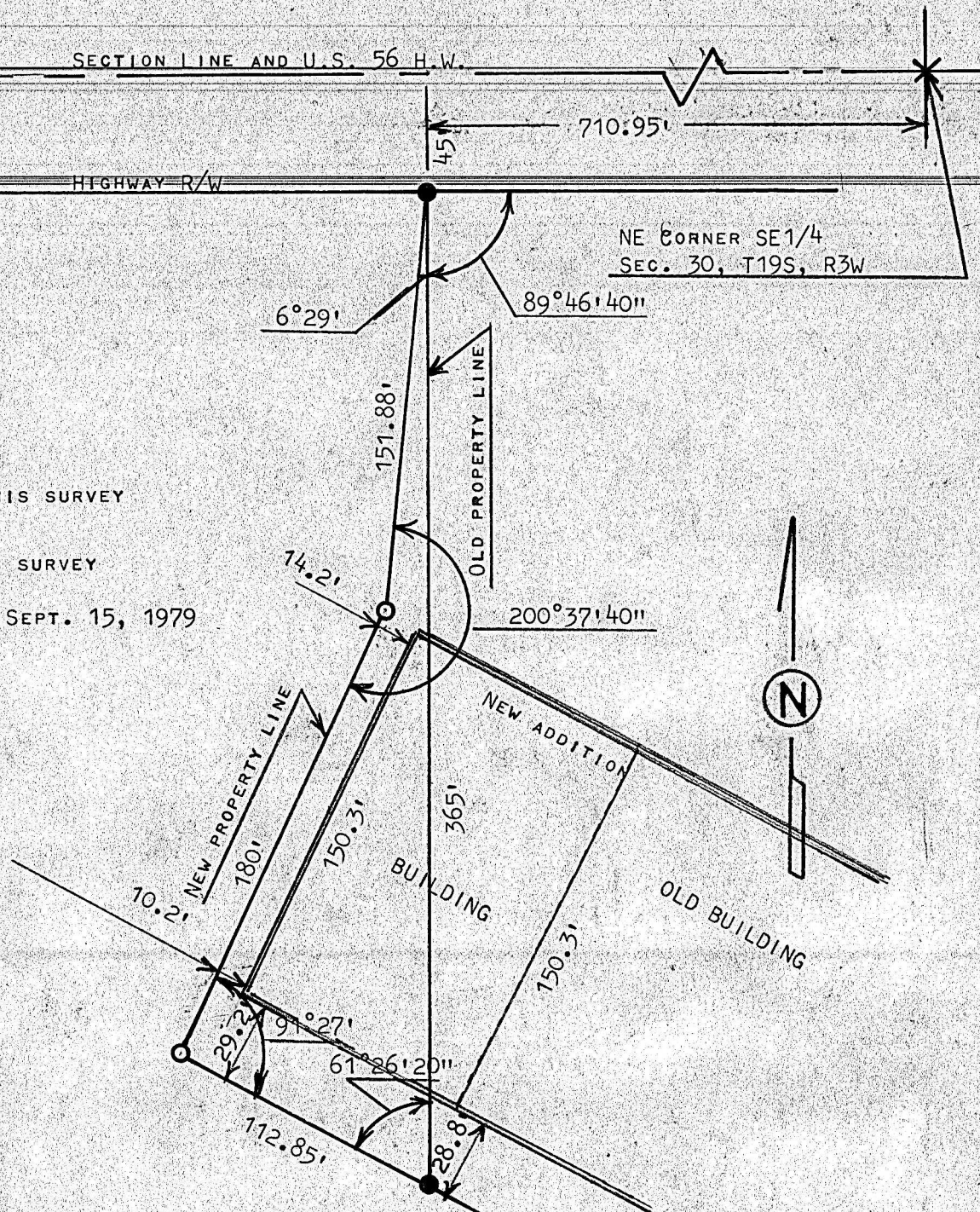
710.950

HIGHWAY-R/W

NE CORNER SE 1/4  
SEC. 30, T19S, R3W

**PINS SET THIS SURVEY**

LOCATE BUILDING SEPT. 15, 1979



STATE OF KANSAS )  
MCPHERSON COUNTY ) SS

BEGINNING AT A POINT 710.95 FEET WEST AND 45 FEET SOUTH OF THE NE CORNER OF SAID SE1/4, SECTION 30, T19S, R3W; THENCE SOUTH WITH AN EXTERIOR ANGLE OF 89°46'40" AND A DISTANCE OF 365 FEET; THENCE NORTHWESTERLY WITH AN INTERIOR ANGLE OF 61°26'20" AND A DISTANCE OF 112.85 FEET; THENCE NORTHEASTERLY WITH AN INTERIOR ANGLE OF 91°27' AND A DISTANCE OF 180 FEET; THENCE NORTHERLY WITH AN INTERIOR ANGLE OF 200°37'40" AND A DISTANCE OF 151.88 FEET AND TO THE PLACE OF BEGINNING, SAID TRACT OF LAND CONTAINS 0.29 ACRES MORE OR LESS AND THAT THE ACCOMPANYING PLAT IS A TRUE EXHIBIT OF SAID SURVEY AS FAR AS IT IS KNOWN TO ME.

SIGNED THIS 21<sup>st</sup> DAY OF FEBRUARY, 1979

MELVIN FERGUSON  
PROFESSIONAL ENGINEER  
MCPHERSON, KANSAS



**MICROFILM**