

Main Office
2908 North Plum Street
Hutchinson, KS 67502
Office: (620) 665-7032
Fax: (620) 663-7401



Garber Surveying Service, P.A.

Branch Offices
511 North Poplar Street
Newton, KS 67114
Office: (316) 283 - 5053
Fax: (316) 283 - 5073

115 East Marlin, Suite 102
McPherson, KS. 67460
Office: (620) 241-4441
Fax: (620) 241-4458

EXHIBIT A

SURVEY FOR: KEARNEY & SON, INC
OWNER: GREGORY J. THOMPSON & JANET K. THOMPSON

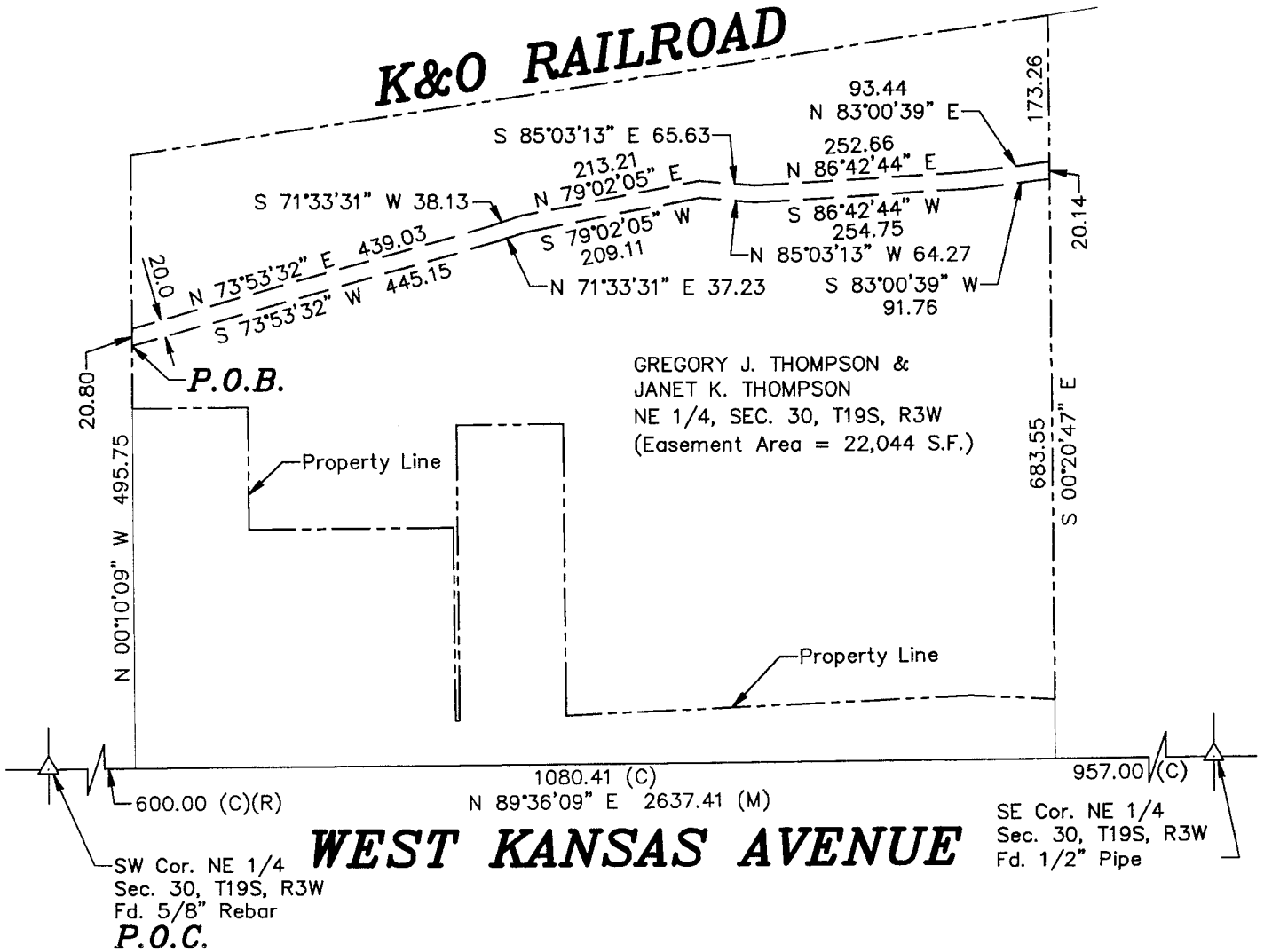
Project No. G2019-545

PROPOSED EASEMENT DESCRIPTION:

A portion of the Northeast Quarter of Section 30, Township 19 South, Range 3 West of the 6th Principal Meridian, McPherson County, Kansas, described as follows:

Commencing at the Southwest corner of said Northeast Quarter; thence on a NAD 83 Kansas South Zone bearing of North 89°36'09" East on the South line of said Southeast Quarter a distance of 600.00 feet; thence North 00°10'09" West a distance of 495.75 feet to the point of beginning; thence continuing North 00°10'09" West a distance of 20.80 feet; thence North 73°53'32" East a distance of 439.03 feet; thence North 71°33'31" East a distance of 38.13 feet; thence North 79°02'05" East a distance of 213.21 feet; thence South 85°03'13" East a distance of 65.63 feet; thence North 86°42'44" East a distance of 252.66 feet; thence North 83°00'39" East a distance of 93.44 feet; thence South 00°20'47" East a distance of 20.14 feet; thence South 83°00'39" West a distance of 91.76 feet; thence South 86°42'44" West a distance of 254.75 feet; thence North 85°03'13" West a distance of 64.27 feet; thence South 79°02'05" West a distance of 209.11 feet; thence South 71°33'31" West a distance of 37.23 feet; thence South 73°53'32" West a distance of 445.15 feet; thence to the point of beginning.

Containing 22,044 Square Feet and subject to any easements or restrictions of record.



WEST KANSAS AVENUE



Scale: 1" = 200'
BASIS OF BEARING
= NAD 83 KANSAS
SOUTH ZONE

LEGEND

- △ - Sectional Monument Found
- P.O.B. - Point of Beginning
- P.O.C. - Point of Commencement
- - Proposed Easement

DATE OF FIELD WORK: August 7, 2019

Copyright © 2019 Garber Surveying Service, P.A.

Nicholas D. Schmidt, PS #1492

