

Sec 30

HIGHWAY DEPARTMENT

COUNTY COMMISSIONERS

FLOYD OLIVER, Chairman, McPherson

GERHARD ZERGER, Moundridge

EMIL BILLING, Lindsborg

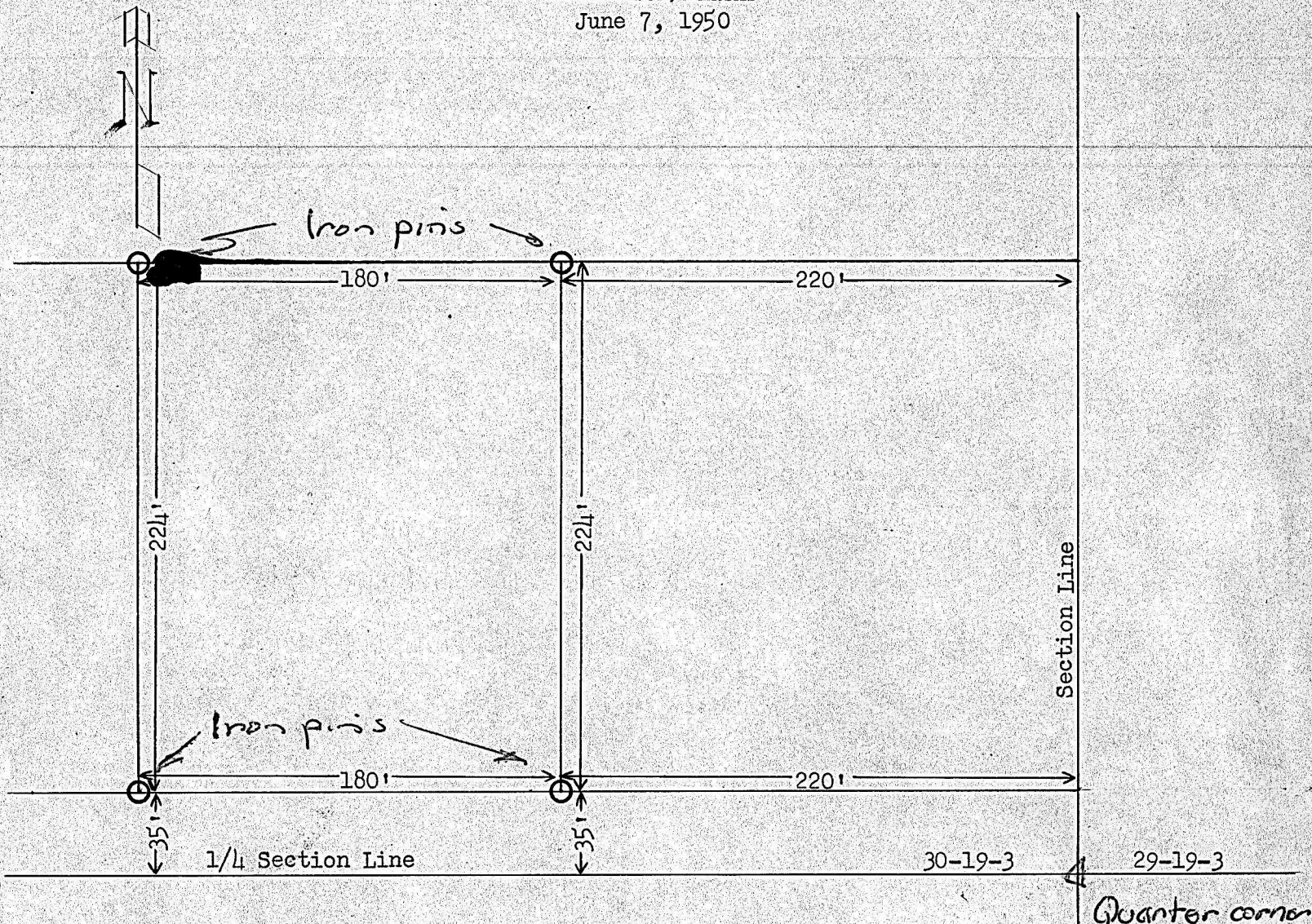
Board in session every Monday

FRANCIS D. WAGNER, COUNTY ENGINEER

McPHERSON COUNTY, KANSAS

McPHERSON, KANSAS

June 7, 1950



State of Kansas,
County of McPherson, ss

I, Francis D. Wagner, County Engineer of McPherson County, Kansas, do hereby certify that I did on the 7th day of June, 1950, survey and establish corners for tract of land located in the $SE\frac{1}{4}$ $SE\frac{1}{4}$ $NE\frac{1}{4}$ of Sec. 30, T19S, R3W, and that the accompanying plat is a true exhibit of said survey.