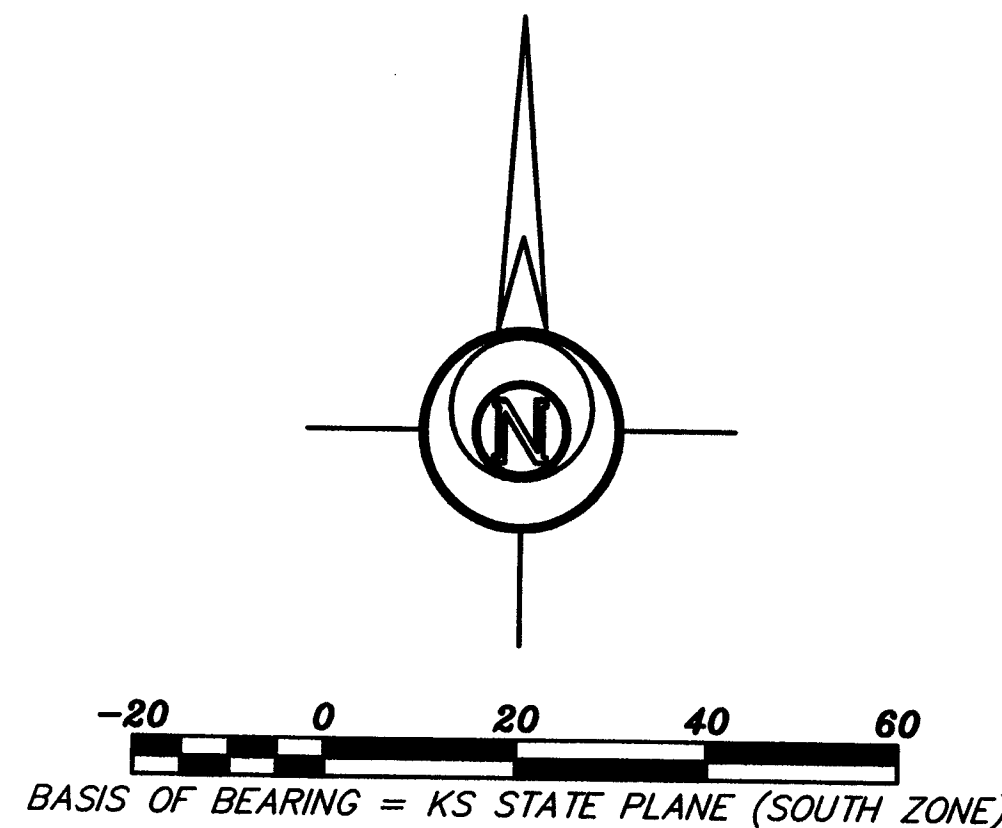
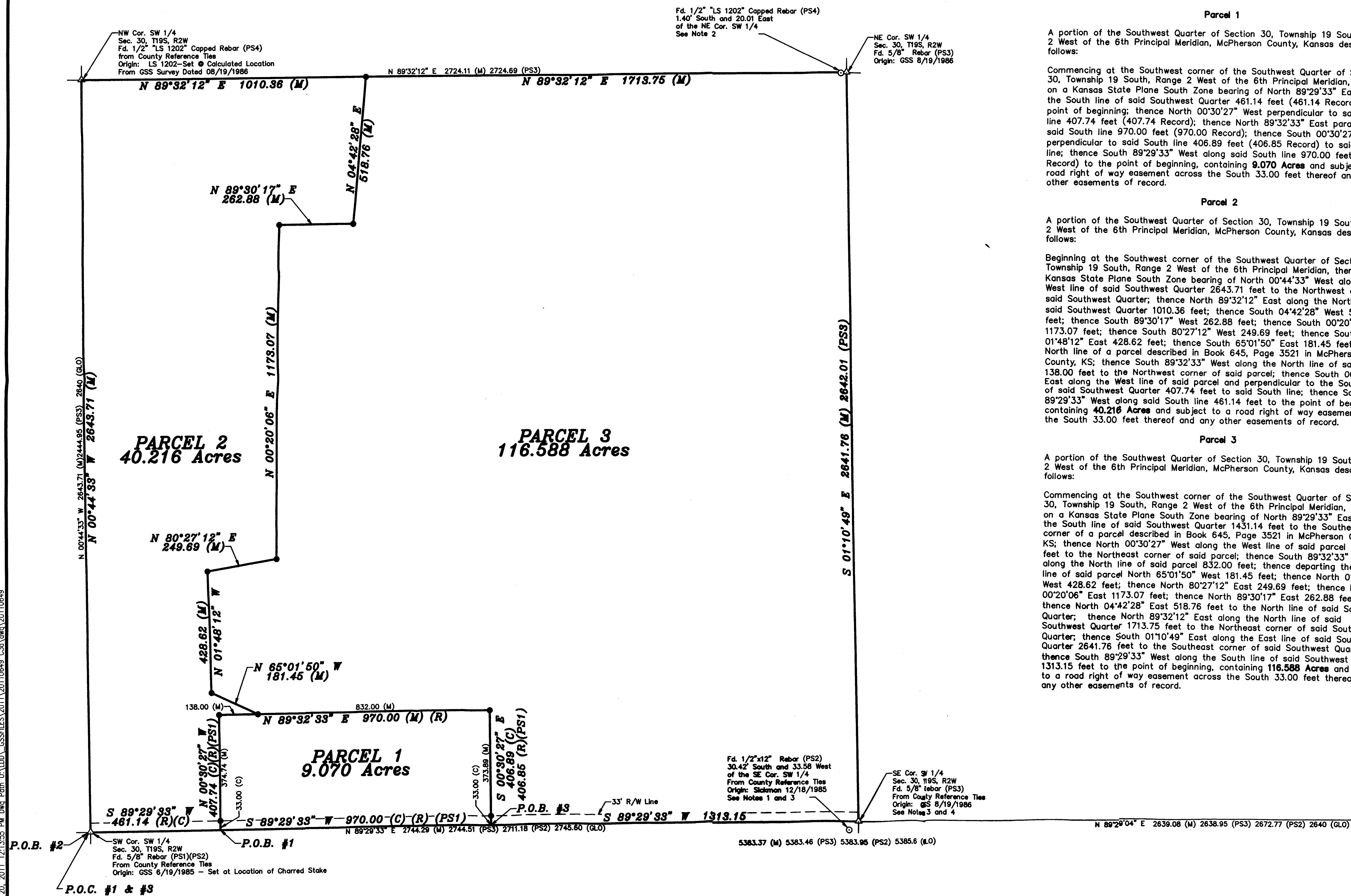


Saved 12/20/2011 12:13:10 PM by TKNAPP  
Plot Date & Time Tuesday, December 20, 2011 12:13:55 PM Dwg Path U:\DATA\_GSS\FILES\2011\20110649 CSd.dwg\20110649

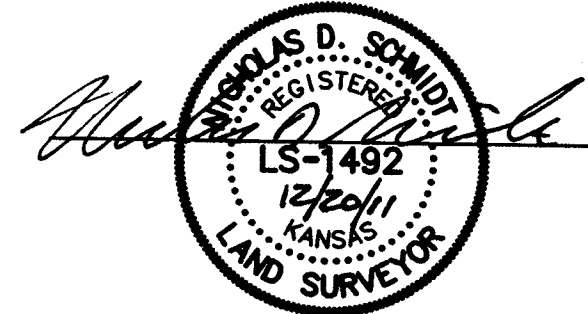


LEGEND	
△	Sectional Monument Found
○	Survey Monument Found
●	5/8" x 24" Iron Rebar Set w/G.S.S. Cap
○	Calculated
(M)	Measured
(R)	Record Measurement Book 645 Page 3521
P.O.B.	Point of Beginning
P.O.C.	Point of Commencement
(PS1)	Previous Survey: Garber Surveying Service GSS 85-122 Dated 6/19/1985
(PS2)	Previous Survey: Sickmon 85-97 Dated 12/18/1985
(PS3)	Previous Survey: Garber Surveying Service GSS 85-581 Dated 8/19/1986
(PS3)	Previous Survey: Heller Survey (LS 1202) Dated 2/17/2004

- SURVEYOR'S NOTES:**
- 1.) According to Sickmon's field Notes (Filed at GSS) Dated 12/18/1985, the 1/2" rebar was reset in the centerline of the Roadway in line with the hedge row South by visual field evidence; he did not accept his calculated solution based on GLO survey records.
  - 2.) According to the survey by Heller dated 2/17/2004, the 5/8" rebar set by GSS on 8/19/1986 was searched for, but nothing was found. The 1/2" with LS 1202 Cap was set at the previous survey distance from the North Quarter Corner with reference to GSS. Upon field review of this site on the date of fieldwork listed herein, the original monument set by GSS on 8/19/1986 was recovered and accepted.
  - 3.) The South 1/4 corner we excavated with a backhoe for the sandstone set by GLO in 3 locations: at the 1/2" rebar set by Sickmon in 1985, at the 5/8" rebar set by GSS in 1986, and at the prorated East/West distance at centerline of roadway. No stone was found.
  - 4.) The accepted position of the 5/8" rebar set by GSS in 1986 at the South 1/4 corner is reinforced by the comparison of acreage for the SW 1/4 and SE 1/4 of Section 30 from this survey with acreage shown on the GLO survey. The calculated acreage for both 1/4 sections are within 0.50 acre of the GLO survey.

**SURVEYOR'S CERTIFICATE:**

I hereby certify this plat to be a true, correct and complete representation of the property described herein, as surveyed under my supervision, this 20th day of December, 2011.



Prepared For:	<b>MIKE KREHBIEL</b>	Description:	<b>THE SW 1/4 SECTION 30, T19S, R2W McPHERSON CO., KS</b>
Prepared By:	<b>GSS</b>	<b>Garber Surveying Service, P.A.</b>	
2908 North Plum St. Hutchinson, Kansas 67502 Phone (620) 665-7032 • FAX (620) 663-7401		511 North Poplar Street Newton, Kansas 67114 Phone (316) 283-5053 • FAX (316) 283-5073	
Drawn By:	TJK	Scale:	1"=200'
Checked By:	NDS	Date:	12/20/2011
		Date of Field Work:	November 22, 2011
		Sheet	1 of 1 Sheet(s)
		Job No:	G2011-649