

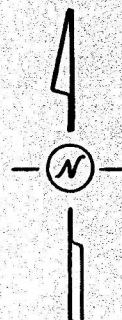
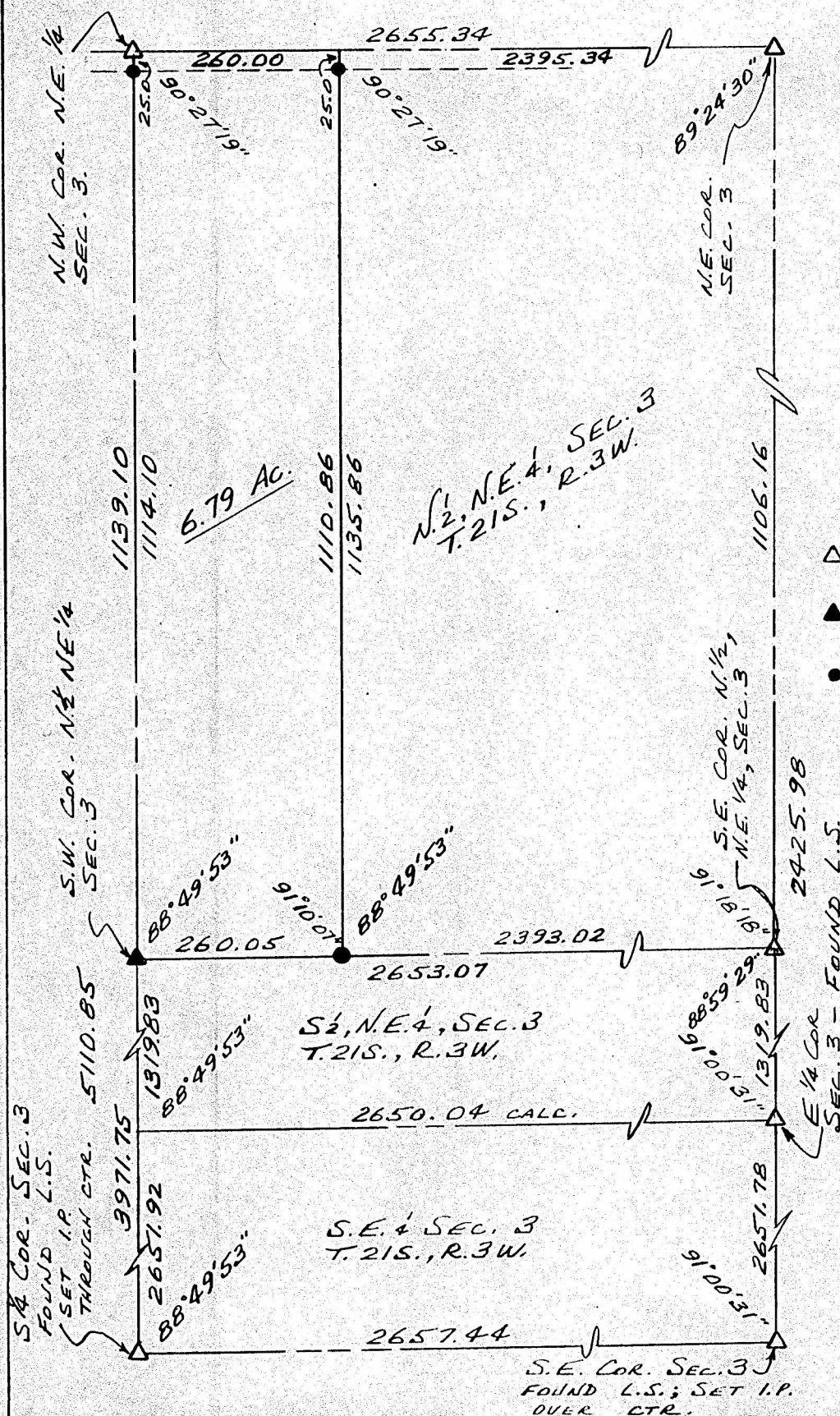
Survey for: Russ Groves

By: Garber Surveying Service, P.A.

217 East First Avenue, Suite 9

Hutchinson, Kansas 67501

DESCRIPTION: A tract in the N.  $\frac{1}{2}$ , N.E.  $\frac{1}{4}$ , Section 3, T.21 S., R.3 W.  
of the 6th P.M. in McPherson County, Kansas as more particularly  
described on the attached sheet.



SCALE: 1"=200'

LEGEND:

- △ - Section subdivision corner found.
- ▲ - Section subdivision corner set
- - 5/8"x24" Iron Pin Set.

I hereby certify this plat to be a true, correct and complete representation of the property described above and on the attached sheet, as surveyed by me, this 7th day of February, 1981.

*Daniel E. Garber*  
Daniel E. Garber RLS

