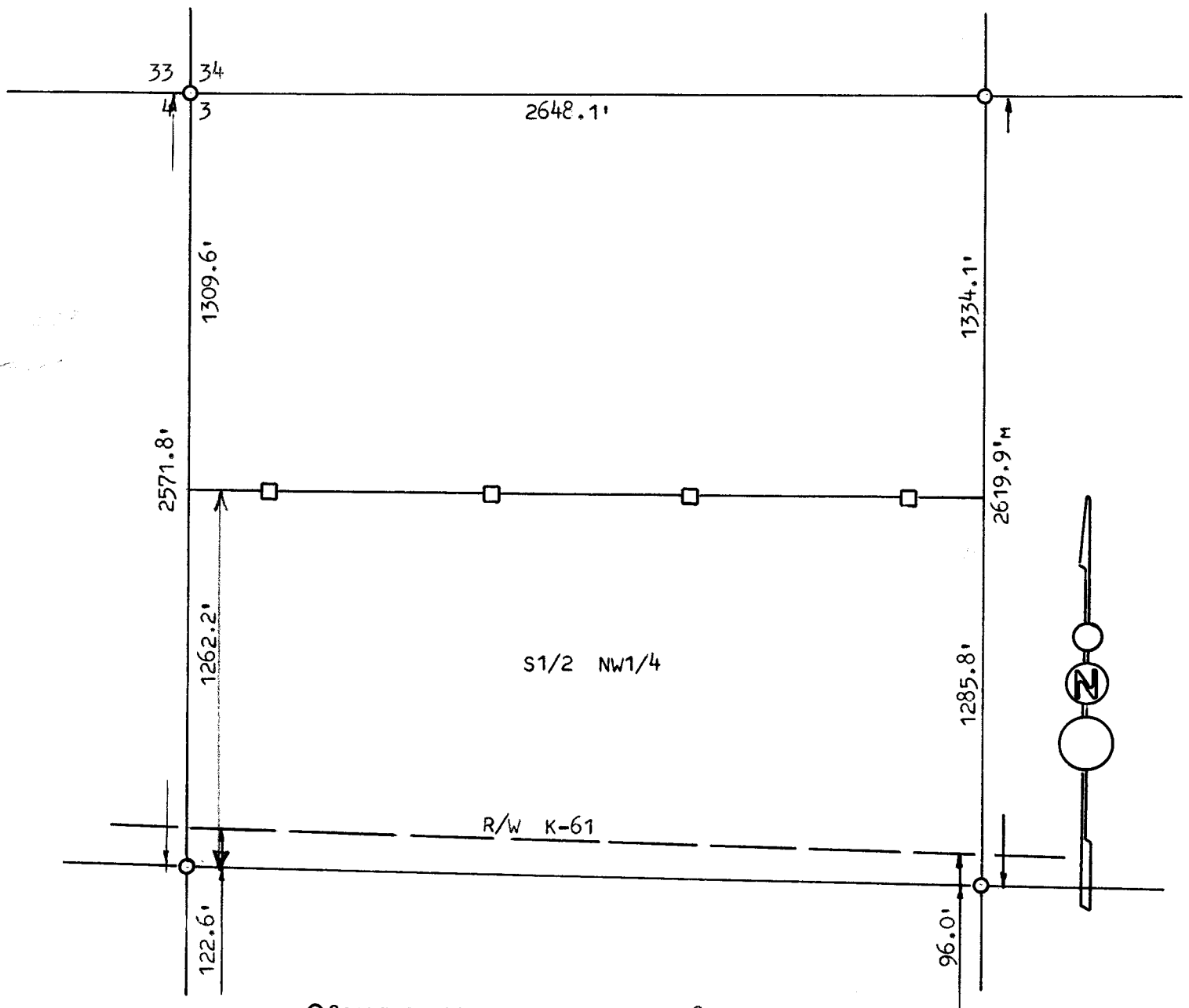


SURVEY OF THE NW1/4 OF SECTION 3, T20S-R3W  
McPHERSON, KANSAS



○ CORNERS ESTABLISHED PREVIOUS SURVEY

□ LATH SET THIS SURVEY

STATE OF KANSAS )  
COUNTY OF McPHERSON ) ss

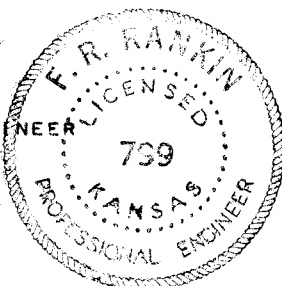
I, F. R. RANKIN, COUNTY ENGINEER OF McPHERSON COUNTY, KANSAS,  
DO HEREBY CERTIFY THAT UNDER MY SUPERVISION A SURVEY WAS MADE TO  
SUB-DIVIDE THE NORTH HALF & THE SOUTH HALF OF SECTION 3, T20S-  
R3W OF THE 6TH P.M. AS NOTED IN THE ORIGINAL SURVEY NOTES DATED  
JUNE 1865 AND THE ABOVE PLAT IS A TRUE EXHIBIT OF SAID SURVEY  
AS FAR AS IT IS KNOWN TO ME.

SURVEY REQUESTED BY EDWARD EMBERS.

SIGNED ON THIS 26 DAY OF OCTOBER, 1973.

*F. R. Rankin*

F. R. RANKIN, P. E.  
DIRECTOR OF P.W. & CO. ENGINEER  
McPHERSON Co., KANSAS



MICROFILM