

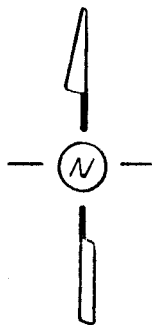
Survey for: Wade Mastre

By: Garber Surveying Service, P.A.

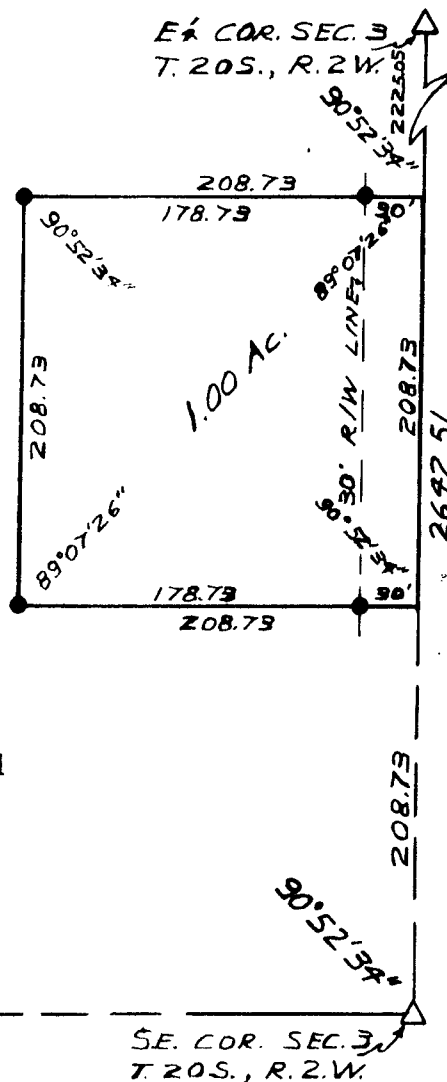
217 East First Avenue, Suite 9

Hutchinson, Kansas 67501

DESCRIPTION: A tract in the East half of the S.E.  $\frac{1}{4}$  of Section 3,  
T.20 S., R.2 W. of the 6th P.M. in McPherson County, Kansas  
as more particularly described on the attached sheet.



SCALE: 1"=100'



LEGEND

- △ - Section subdivision corner found
- - 5/8"x 24" iron pin set

I hereby certify this plat to be a true, correct  
and complete representation of the property described  
above and on the attached sheet, as surveyed by me,  
this 26th day of October, 1981.

*Daniel E. Garber*  
Daniel E. Garber RLS

