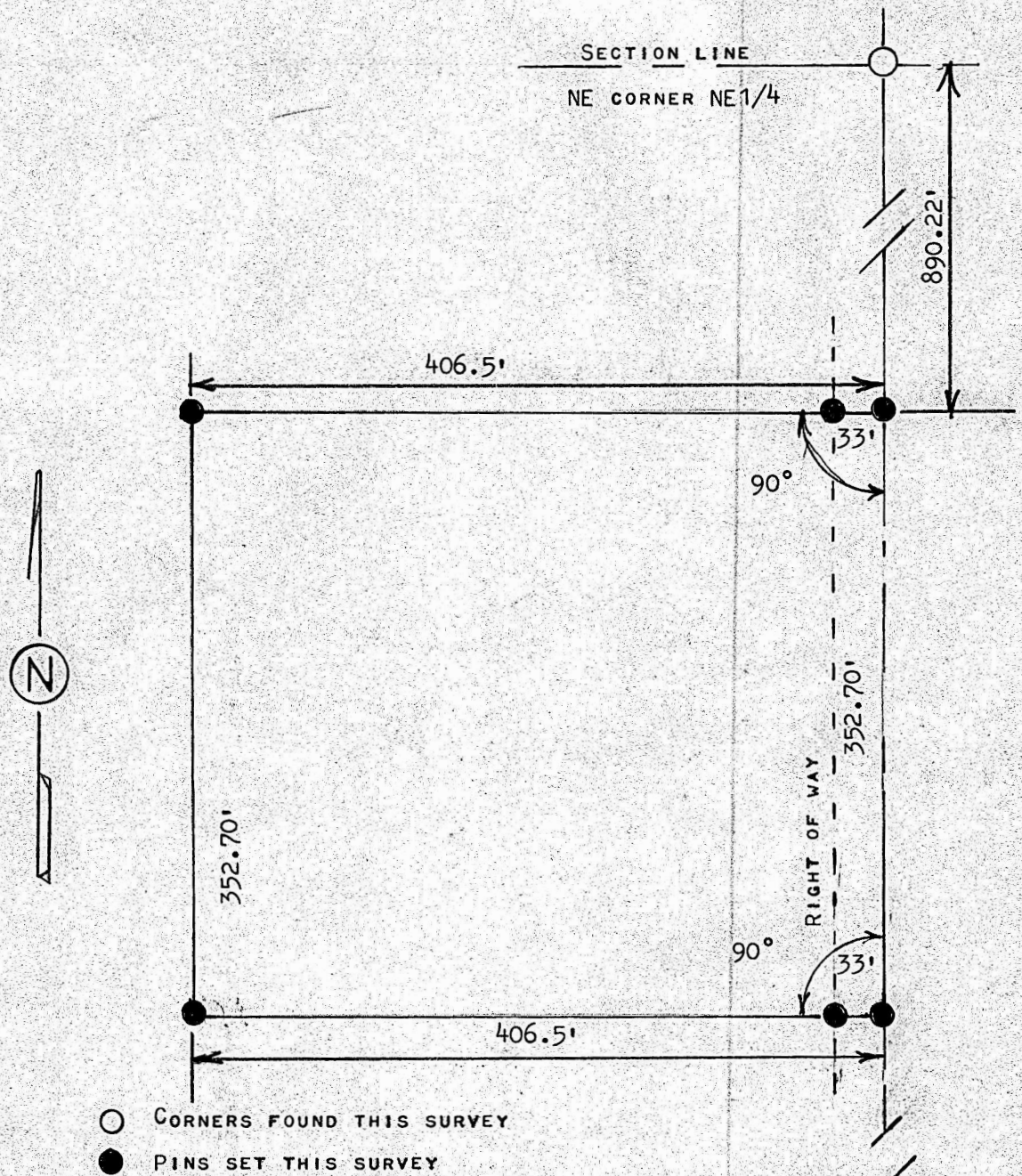


A SURVEY OF A TRACT OF LAND IN THE NE1/4, SECTION 3,
T19S, R4W, MCPHERSON COUNTY, KANSAS



STATE OF KANSAS)
COUNTY OF MCPHERSON) SS

SE CORNER
NE1/4

I, MELVIN FERGUSON, PROFESSIONAL ENGINEER OF THE STATE OF KANSAS
DO HEREBY CERTIFY THAT UNDER MY SUPERVISION A SURVEY WAS MADE IN
NE1/4, SECTION 3, T19S, R4W OF THE 6TH P.M. AND DESCRIBED AS FOLLOWS;
BEGINNING 890.22 FEET SOUTH OF THE NE CORNER OF SAID NE1/4, SECTION 3,
T19S, R4W; THENCE RIGHT ANGLE TO THE WEST 406.5 FEET; THENCE SOUTH
PARALLEL WITH SECTION LINE 352.70 FEET; THENCE EAST TO SECTION LINE
AT A RIGHT ANGLE 406.5 FEET; THENCE NORTH ON SECTION LINE 352.70 FEET,
AND TO PLACE OF BEGINNING, SAID TRACT OF LAND CONTAINS 3.3 ACRES MORE
OR LESS, AND THAT THE ABOVE PLAT IS A TRUE EXHIBIT OF SAID SURVEY AS
FAR AS IT IS KNOWN TO ME.

SURVEY CALLED FOR BY SCHMIDT (SHEET-ADAMS)

SIGNED THIS 31st DAY OF AUGUST 1982
MELVIN FERGUSON
PROFESSIONAL ENGINEER
MCPHERSON, KANSAS

