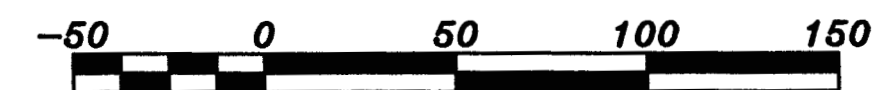
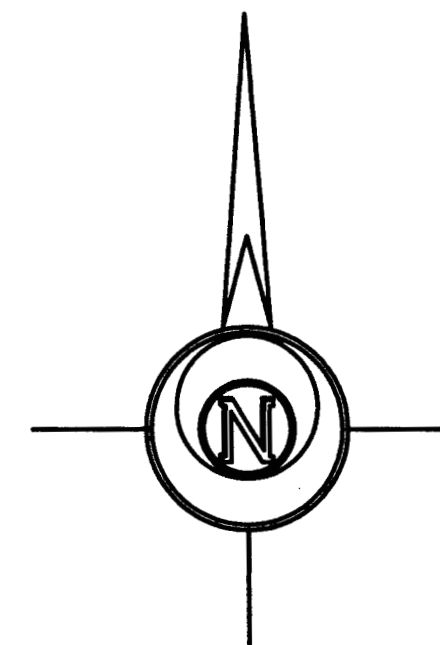
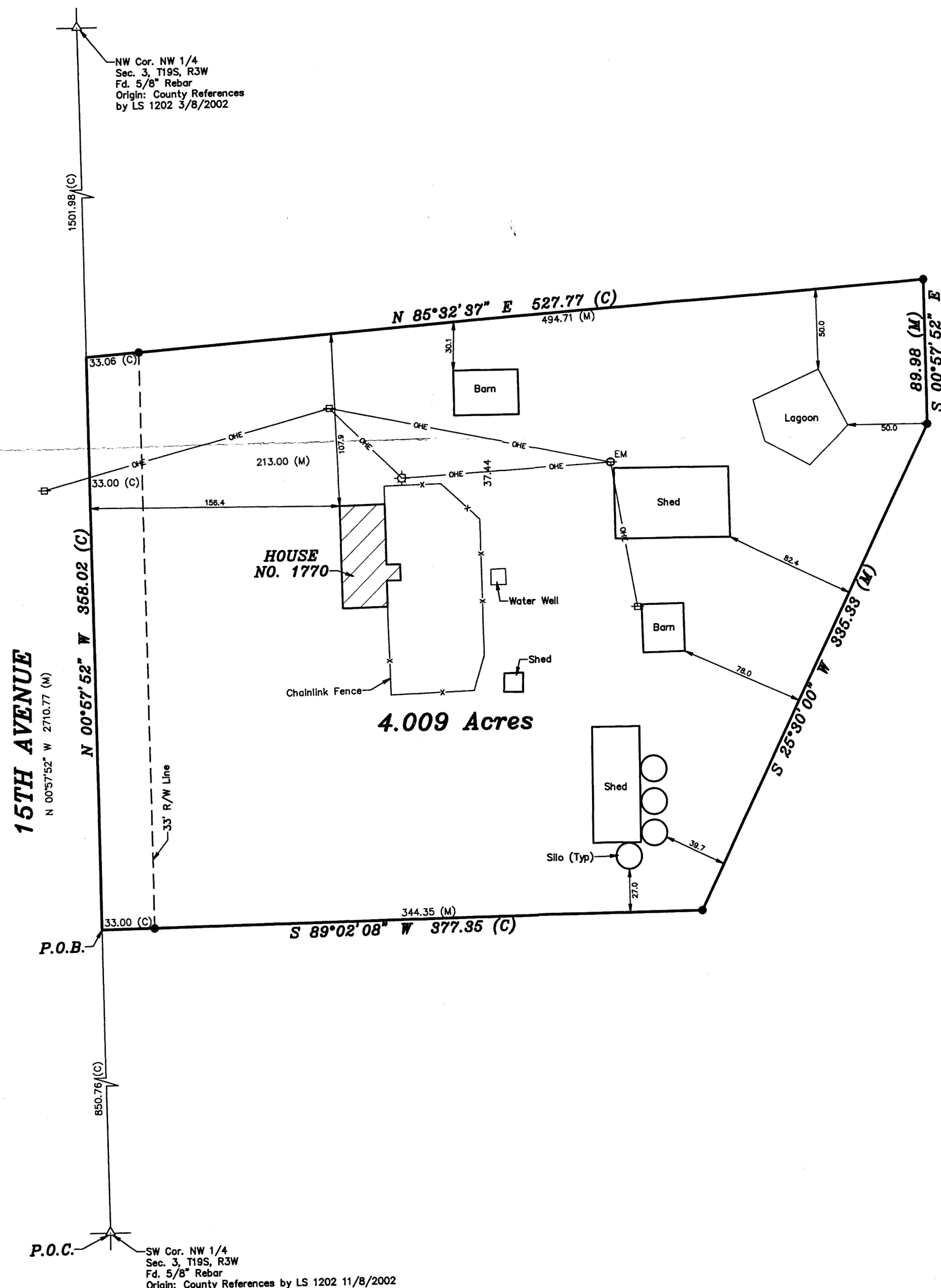


Copyright © 2018 Garber Surveying Service, P.A. Saved 12/27/2018 4:15:41 PM by K200K
Plot Date & Time: Thursday, December 27, 2018 4:16:39 PM Dwg Path C:\DDO\GSSFILES\2018\20180889M.dwg\20180889 Revised KWE Auto S Ground



BASIS OF BEARING = NAD 83 KANSAS SOUTH ZONE

LEGEND

- △ - Sectional Monument Found
- - 5/8" x 24" Iron Rebar Set w/GSS CLS 52 Cap
- - Sanitary Sewer Cleanout
- ✕ - Fence
- - Light Pole
- ⊕ - Power Pole
- EM - Electric Meter
- OHE- - Overhead Electric
- (C) - Calculated
- (M) - Measured
- P.O.B. - Point of Beginning
- P.O.C. - Point of Commencement

DESCRIPTION:

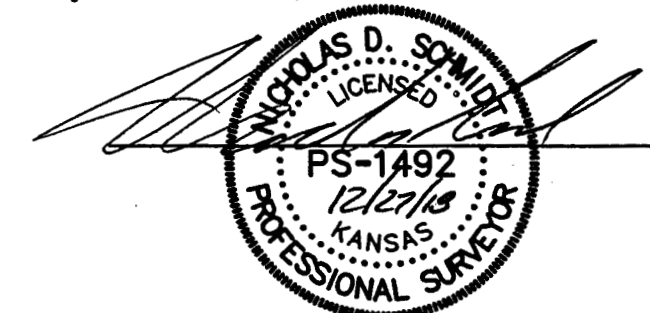
A portion of the Northwest Quarter of Section 3, Township 19 South, Range 3 West of the 6th Principal Meridian, McPherson County, Kansas described as follows:

Commencing at the Southwest corner of said Northwest Quarter; thence on a NAD 83 Kansas South Zone bearing of North 00°57'52" West on the West line of said Northwest Quarter a distance of 850.76 feet to the point of beginning; thence continuing North 00°57'52" West on said West line a distance of 358.02 feet; thence North 85°32'37" East a distance of 527.77 feet; thence South 00°57'52" East parallel with said West line a distance of 89.98 feet; thence South 25°30'00" West a distance of 335.33 feet; thence South 89°02'08" West perpendicular to said West line a distance of 377.35 feet to the point of beginning.

Containing 4.009 Acres and subject to a road right of way easement across the West 33.00 feet thereof, and any other easements or restrictions of record.

SURVEYOR'S CERTIFICATE:

I hereby certify this plat to be a true, correct and complete representation of the property described hereon, as surveyed under my supervision, this 27th day of December, 2018.



Prepared For: RON ERICKSON		Description: A PORTION OF THE NW 1/4 SECTION 3, T19S, R3W MCPHERSON COUNTY, KANSAS	
Prepared By: GSS		Garber Surveying Service, P.A.	
HUTCHINSON (Main Office) 2908 North Plum St. 67502 Ph. 620-665-7032 Fax 620-663-7401		MCPHERSON (Branch Office) 115 East Marlin 67460 Ph. 620-241-4441 Fax 620-241-4458	
NEWTON (Branch Office) 511 North Poplar St. 67114 Ph. 316-283-5053 Fax 316-283-5073			
Drawn By: KDZ	Scale: 1"=20'	Date of Field Work: December 5, 2018	Job No: G2018-889
Checked By: NDS	Date: 12/27/2018	Sheet 1 of 1 Sheet(s)	