

- LEGEND**
- △ - Sectional Monument Found
  - - Fd. 5/8" Rebar w/GSS Cap
  - - 5/8" x 24" Iron Rebar Set w/G.S.S. Cap
  - (C) - Calculated
  - (M) - Measured
  - (PS) - Previous Survey GSS Project #G2018-396
  - P.O.B. - Point of Beginning
  - P.O.C. - Point of Commencement

**DESCRIPTION:**

**PARCEL 1**

A portion of the Northwest Quarter of Section 3, Township 18 South, Range 4 West of the 6th Principal Meridian, McPherson County, Kansas described as follows:

Beginning at the Northeast corner of said Northwest Quarter; thence on a NAD 83 Kansas South Zone bearing of South 04°16'17" East on the East line of said Northwest Quarter a distance of 2777.38 feet to the Southeast corner of said Northwest Quarter; thence South 89°41'33" West on the South line of said Northwest Quarter a distance of 681.20 feet; thence North 40°27'01" West a distance of 75.66 feet; thence North 63°24'31" West a distance of 92.56 feet; thence North 76°40'50" West a distance of 95.55 feet; thence North 83°49'38" West a distance of 407.02 feet; thence North 24°48'58" West a distance of 476.21 feet; thence North 79°13'54" West a distance of 396.51 feet; thence North 38°40'35" West a distance of 166.06 feet; thence North 19°35'26" West a distance of 339.65 feet; thence North 02°20'39" West a distance of 1060.24 feet; thence North 76°16'09" East a distance of 240.24 feet; thence South 89°07'09" East a distance of 382.09 feet; thence North 00°44'38" West a distance of 538.95 feet to the North line of said Northwest Quarter; thence North 89°51'53" East on said North line a distance of 1345.82 feet to the point of beginning.

Containing **108.156 Acres** and subject to a road right of way easement across the North 33.00 feet thereof, and any other easements or restrictions of record.

**PARCEL 2**

A portion of the Northwest Quarter of Section 3, Township 18 South, Range 4 West of the 6th Principal Meridian, McPherson County, Kansas described as follows:

Beginning at the Northwest corner of said Northwest Quarter; thence on a NAD 83 Kansas South Zone bearing of North 89°51'53" East on the North line of said Northwest Quarter a distance of 1288.06 feet to a point 1345.82 feet West of the Northeast corner of said Northwest Quarter; thence South 00°44'38" East a distance of 538.95 feet; thence North 89°07'09" West a distance of 382.09 feet; thence South 76°16'09" West a distance of 240.24 feet; thence South 02°20'39" East a distance of 1060.24 feet; thence South 19°35'26" East a distance of 339.65 feet; thence South 38°40'35" East a distance of 166.06 feet; thence South 79°13'54" East a distance of 396.51 feet; thence South 24°48'58" East a distance of 476.21 feet; thence South 83°49'38" East a distance of 407.02 feet; thence South 76°40'50" East a distance of 95.55 feet; thence South 63°24'31" East a distance of 92.56 feet; thence South 40°27'01" East a distance of 75.66 feet to a point on the South line of said Northwest Quarter, said point being 681.20 feet West of the Southeast corner of said Northwest Quarter; thence South 89°41'33" West on said South line a distance of 1830.26 feet to the Southwest corner of said Northwest Quarter; thence North 06°45'48" West on the West line of said Northwest Quarter a distance of 2796.38 feet to the point of beginning.

Containing **55.694 Acres** and subject to road right of way easements across the North and West 33.00 feet thereof, and any other easements or restrictions of record.

**PARCEL 3**

A portion of the West Half of the Southwest Quarter of Section 3, Township 18 South, Range 4 West of the 6th Principal Meridian, McPherson County, Kansas described as follows:

Beginning at the Northwest corner of said Southwest Quarter; thence on a NAD 83 Kansas South Zone bearing of North 89°41'33" East on the North line of said Southwest Quarter a distance of 1255.73 feet to the Northeast corner of the West Half of said Southwest Quarter; thence South 00°26'39" East on the East line of said West Half a distance of 2669.16 feet to the Southeast corner of said West Half; thence South 89°43'24" West on the South line of said West Half a distance of 378.05 feet; thence North 08°55'37" West a distance of 2100.92 feet; thence North 89°18'26" West a distance of 573.87 feet to the West line of said Southwest Quarter; thence North 00°08'49" East on said West line a distance of 581.75 feet to the point of beginning.

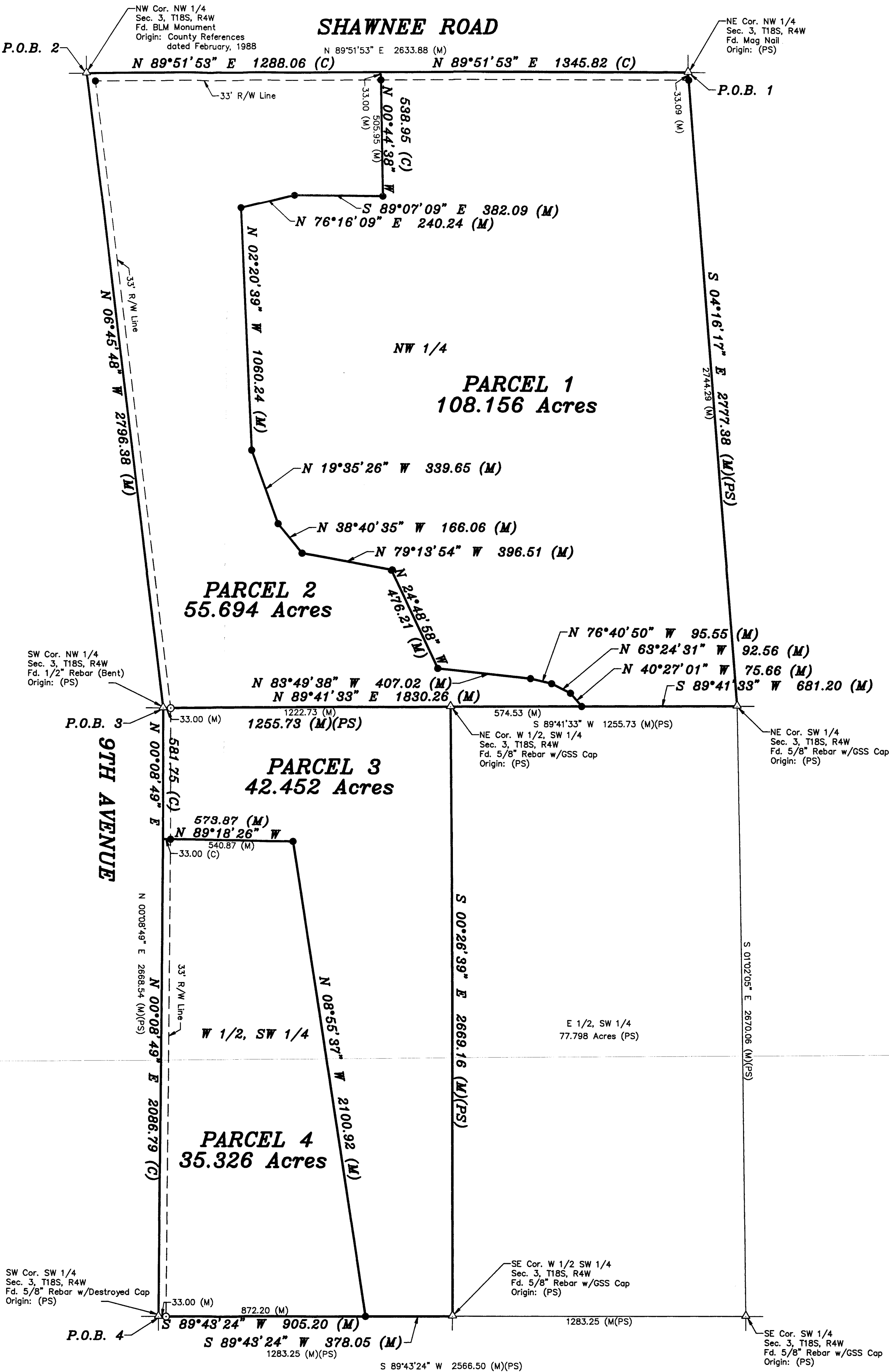
Containing **42.452 Acres** and subject to a road right of way easement across the West 33.00 feet thereof, and any other easements or restrictions of record.

**PARCEL 4**

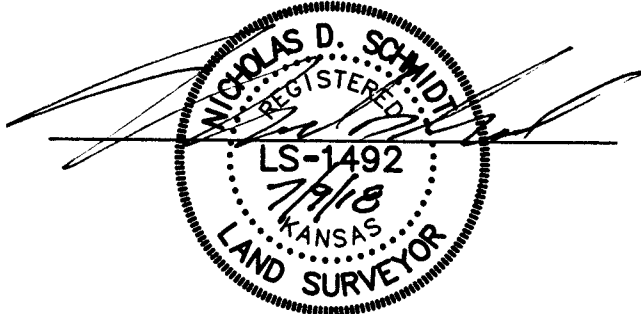
A portion of the West Half of the Southwest Quarter of Section 3, Township 18 South, Range 4 West of the 6th Principal Meridian, McPherson County, Kansas described as follows:

Beginning at the Southwest corner of said Southwest Quarter; thence on a NAD 83 Kansas South Zone bearing of North 00°08'49" East on the West line of said Southwest Quarter a distance of 2086.79 feet to a point 581.75 feet South of the Northwest corner of said Southwest Quarter; thence South 89°18'26" East a distance of 573.87 feet; thence South 08°55'37" East a distance of 2100.92 feet to a point on the South line of said Southwest Quarter, said point being 378.05 feet West of the Southeast corner of the West Half of said Southwest Quarter; thence South 89°43'24" West on said South line a distance of 905.20 feet to the point of beginning.

Containing **35.326 Acres** and subject to a road right of way easement across the West 33.00 feet thereof, and any other easements or restrictions of record.



**SURVEYOR'S CERTIFICATE:**  
I hereby certify this plat to be a true, correct and complete representation of the property described hereon, as surveyed under my supervision, this 9th day of July, 2018.



Prepared For: <b>KENT RAWSON</b>		Description: <b>A PORTION OF THE W 1/2 SECTION 3, T18S, R4W MCPHERSON COUNTY, KANSAS</b>	
Prepared By: <b>GSS</b>		<b>Garber Surveying Service, P.A.</b>	
HUTCHINSON (Main Office) 2908 North Plum St. 67502 Ph. 620-465-7032 Fax 620-663-7401		McPHERSON (Branch Office) 115 East Marlin 67460 Ph. 620-241-4441 Fax 620-241-4458	
NEWTON (Branch Office) 511 North Poplar St. 67114 Ph. 316-283-5053 Fax 316-283-5073			
Drawn By: <b>KDZ</b>	Scale: <b>1"=200'</b>	Date of Field Work: <b>June 21, 2018</b>	Job No: <b>G2018-466</b>
Checked By: <b>NDS</b>	Date: <b>07/09/2018</b>	Sheet <b>1 of 1</b> Sheet(s)	