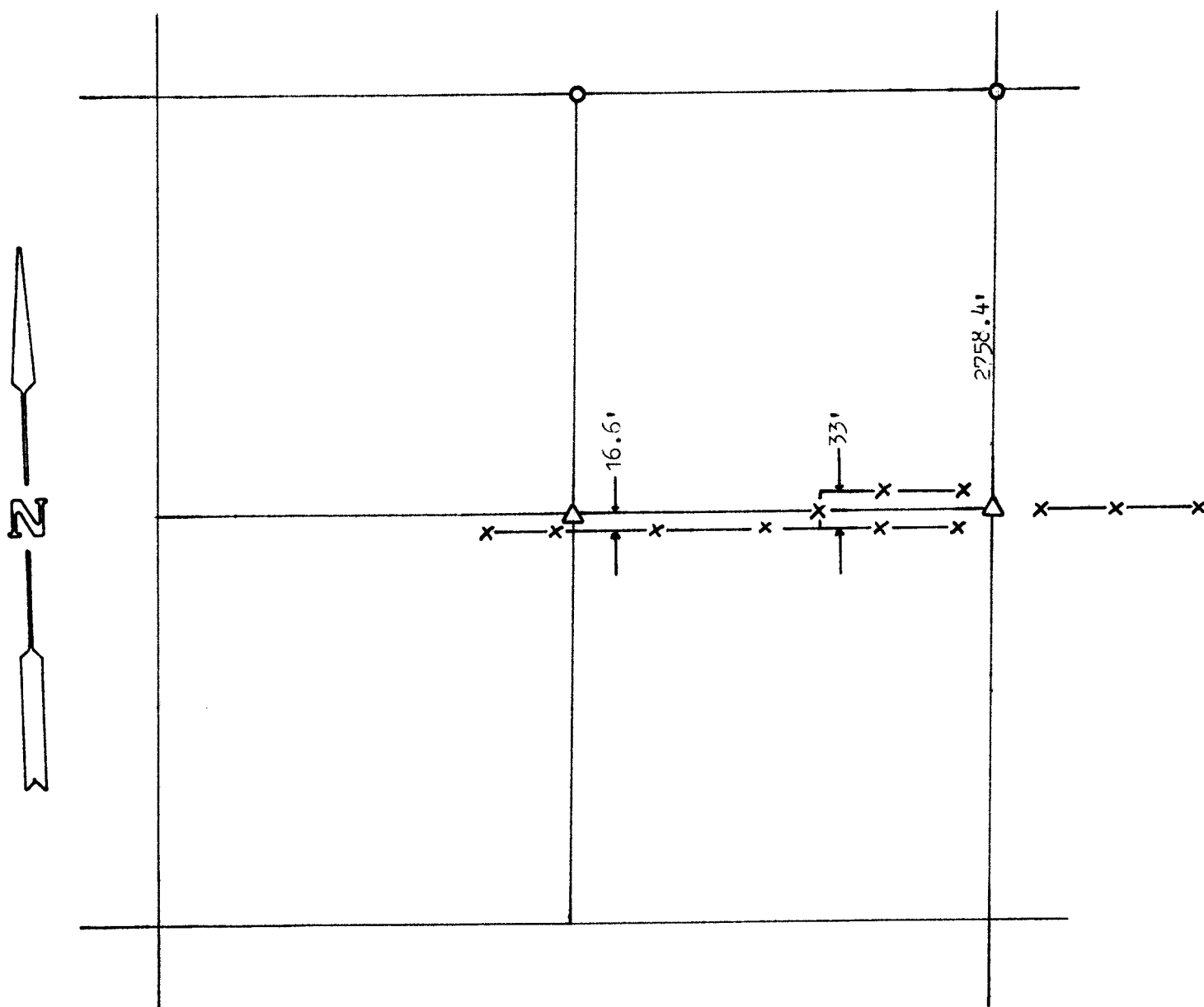


A SURVEY OF THE NORTHEAST 1/4,
SECTION 3, T18S, R4W,
McPHERSON COUNTY, KANSAS



- GOVERNMENT PINS FOUND THIS SURVEY
- △ STONES FOUND THIS SURVEY

STATE OF KANSAS)
COUNTY OF McPHERSON) SS

I, FRANCIS R. RANKIN, COUNTY ENGINEER OF McPHERSON COUNTY, KANSAS DO
HEREBY CERTIFY THAT UNDER MY SUPERVISION A SURVEY WAS MADE TO DETERMINE
THE CORNERS OF THE NE 1/4, SECTION 3, T18S, R4W. THE ACCOMPANYING PLAT
IS A TRUE EXHIBIT OF SAID SURVEY AS FAR AS IT IS KNOWN TO ME.

SURVEY CALLED FOR BY GEORGE SENTS

SIGNED THIS 19 DAY OF JULY, 1972

Francis R. Rankin
FRANCIS R. RANKIN
COUNTY ENGINEER
McPHERSON COUNTY, KANSAS

