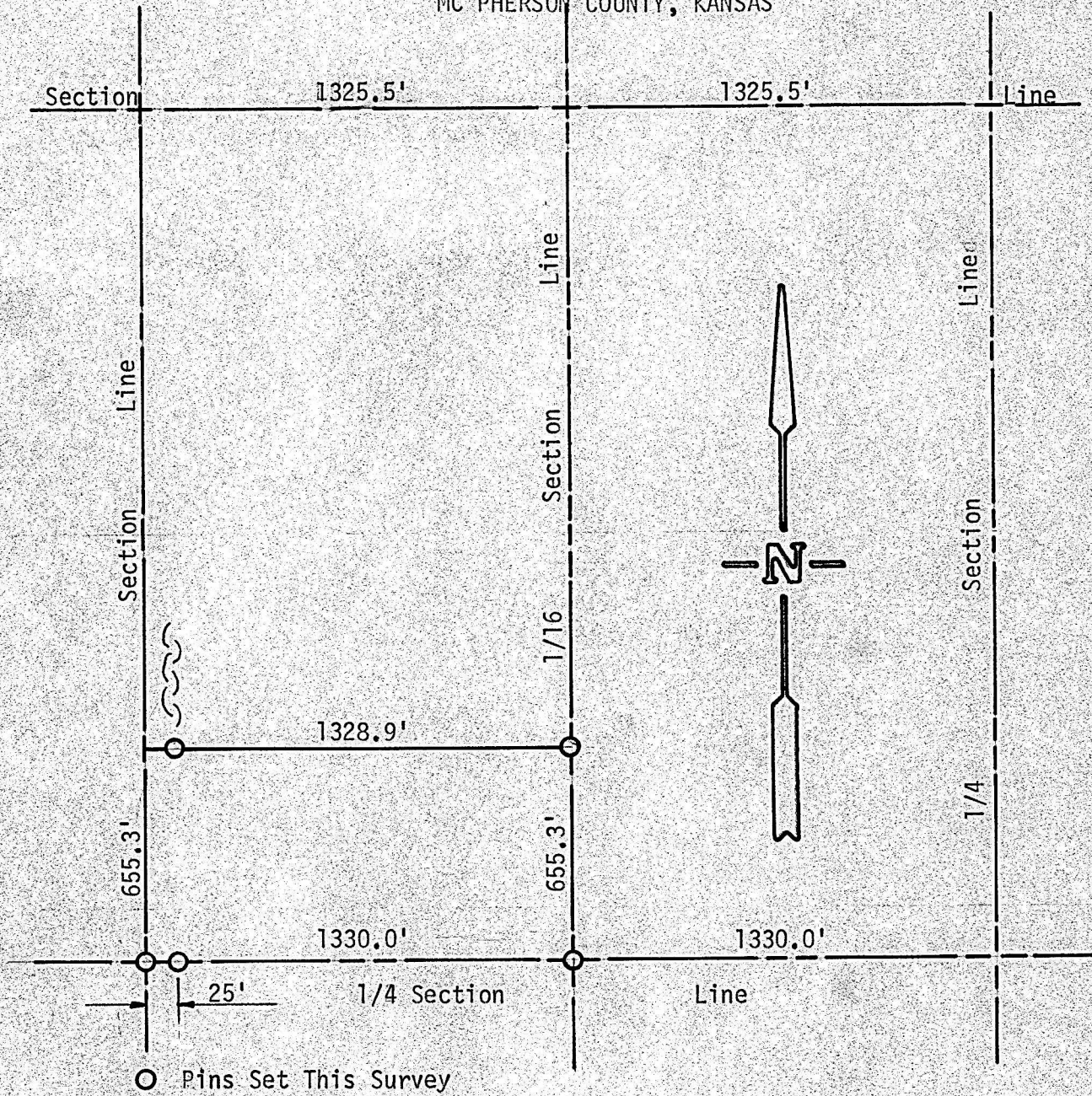


A SURVEY OF THE SOUTH 20 ACRES OF THE
W 1/2, NW 1/4 OF SECTION 3, T18S, R3W
MC PHERSON COUNTY, KANSAS



State of Kansas)
County of McPherson) SS

I, F. R. Rankin, County Engineer of McPherson County, Kansas, do hereby certify that under my supervision a survey was made of the South 20 Acres of the W 1/2 of the NW 1/4 of Section 3, T18S, R3W of the 6th P.M. and the above plat is a true exhibit of said survey as far as it is known to me.

Survey called for by Martin Rasmusson

Signed on this 18 day of May, 1972.

F. R. Rankin

F. R. Rankin, P. E.
County Engineer
McPherson County, Kansas

