

BASIS OF BEARING = NAD 83 KANSAS SOUTH ZONE

LEGEND

- △ - Sectional Monument Found
- ▲ - Section Monument Set 95/8" x 24" Iron Rebar w/GSS CLS 52 Cap
- - 5/8" x 24" Iron Rebar Set w/GSS CLS 52 Cap
- (C) - Calculated
- (M) - Measured
- GLO - General Land Office
- (PS) - Previous Survey GSS Project #G2018-297
- P.O.B. - Point of Beginning
- P.O.C. - Point of Commencement

DESCRIPTION:

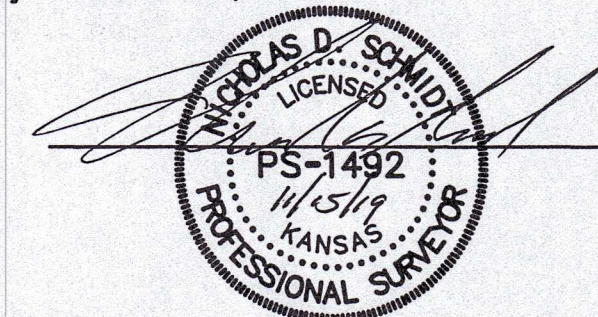
A portion of the Northeast Quarter of Section 3, Township 18 South, Range 1 West of the 6th Principal Meridian, McPherson County, Kansas described as follows:

Commencing at the Northwest Quarter of said Northeast Quarter; thence on a NAD 83 Kansas South Zone bearing of North 89°02'03" East on the North line of said Northeast Quarter a distance of 87.00 feet to the point of beginning; thence North 89°02'03" East on said North line a distance of 48.00 feet; thence South 00°57'57" East perpendicular to said North line a distance of 449.24 feet; thence North 89°02'03" East parallel with said North line a distance of 392.88 feet; thence South 00°57'57" East perpendicular to said North line a distance of 309.83 feet; thence South 20°49'29" East a distance of 212.52 feet; thence South 00°57'57" East perpendicular to said North line a distance of 131.43 feet; thence South 89°02'03" West parallel with said North line a distance of 170.56 feet; thence South 00°57'57" West perpendicular to said North line a distance of 331.32 feet; thence South 89°02'03" West parallel with said North line a distance of 342.51 feet; thence North 00°57'57" West perpendicular to said North line a distance of 759.07 feet to the point of beginning.

Containing 4.762 Acres and subject to a road right of way easement across the North 33.00 feet thereof, and any other easements or restrictions of record.

SURVEYOR'S CERTIFICATE:

I hereby certify this plat to be a true, correct and complete representation of the property described hereon, as surveyed under my supervision, this 15th day of November, 2019



Prepared For:		Description:	
SUE BOLDRA		A PORTION OF THE N 1/2 SECTION 3, T18S, R01W McPHERSON COUNTY, KANSAS	
Prepared By:		Garber Surveying Service, P.A.	
		HUTCHINSON (Main Office) 2908 North Plum St. 67502 Ph. 620-665-7032 Fax 620-663-7401	
		McPHERSON (Branch Office) 115 East Marlin 67460 Ph. 620-241-4441 Fax 620-241-4458	
		NEWTON (Branch Office) 511 North Poplar St. 67114 Ph. 316-283-5053 Fax 316-283-5073	
		MANHATTAN (Branch Office) 3226 Kimball Ave Ste. #2 66503 Ph. 785-320-4810	
Drawn By: MVK	Scale: 1"= 100	Date of Field Work: October 24, 2019	Job No:
Checked By: DEG	Date: 11/15/2019	Sheet 1 of 1 Sheet(s)	G2019-759