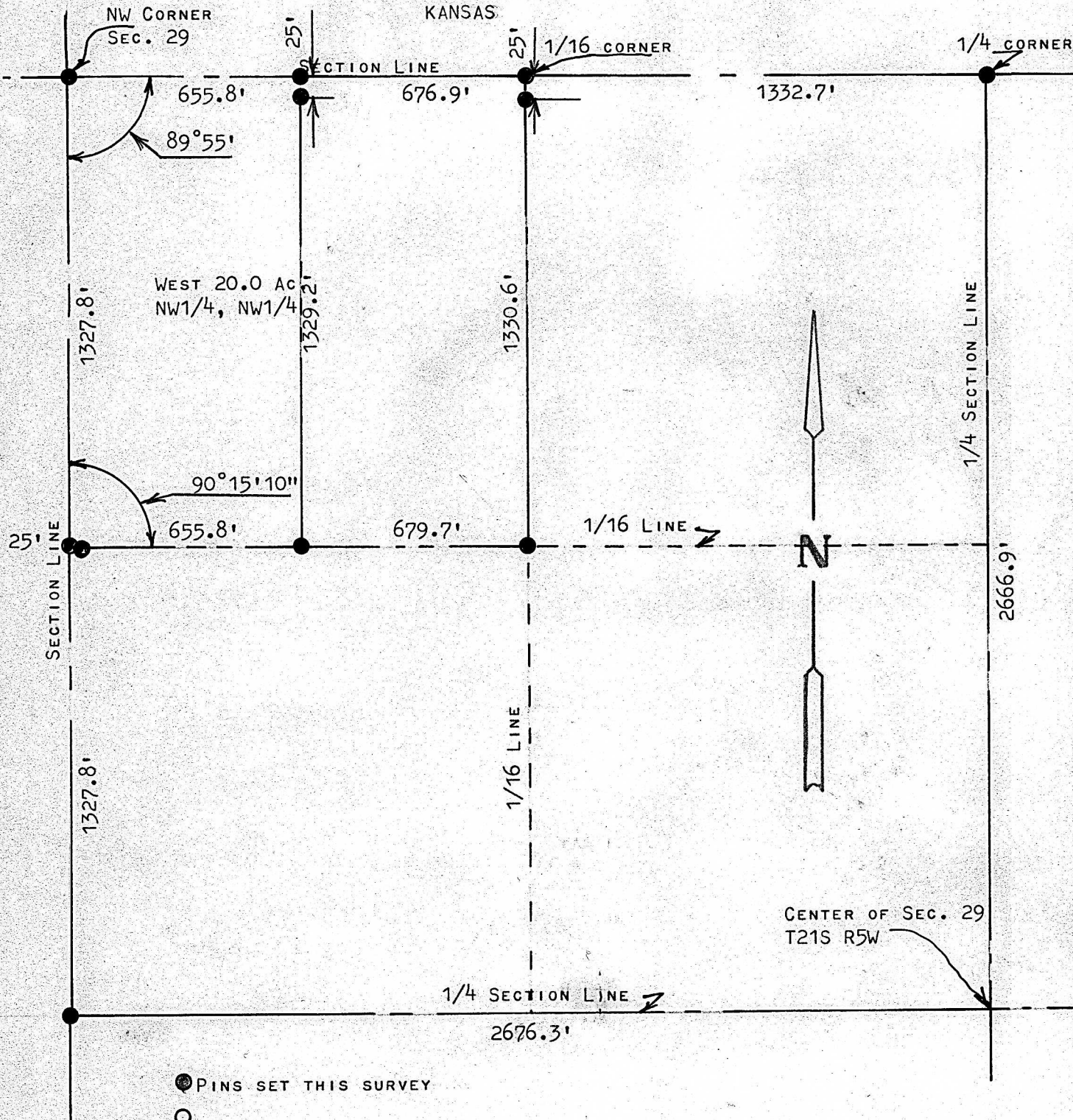


A SURVEY IN THE NW1/4 OF  
SECTION 29, T21S R5W  
MCPHERSON COUNTY  
KANSAS



PINS SET THIS SURVEY

STATE OF KANSAS )  
COUNTY OF MCPHERSON ) SS

I, FRANCIS RANKIN, PROFESSIONAL ENGINEER OF THE STATE OF KANSAS DO  
HEREBY CERTIFY THAT UNDER MY SUPERVISION A SURVEY WAS MADE OF THE  
NW1/4, NW1/4, AND THE WEST 20.0 ACRES OF THE NW1/4, NW1/4, SECTION 29  
T21S R5W OF THE 6TH P.M. AND THAT THE ACCOMPANYING PLAT IS A TRUE  
EXHIBIT OF SAID SURVEY AS FAR AS IT IS KNOWN TO ME.

SURVEY CALLED FOR BY BUD ENSZ

SIGNED THIS DAY 37 OF MAY, 1968

FRANCIS RANKIN  
PROFESSIONAL ENGINEER  
MCPHERSON, KANSAS

*Francis Rankin*

