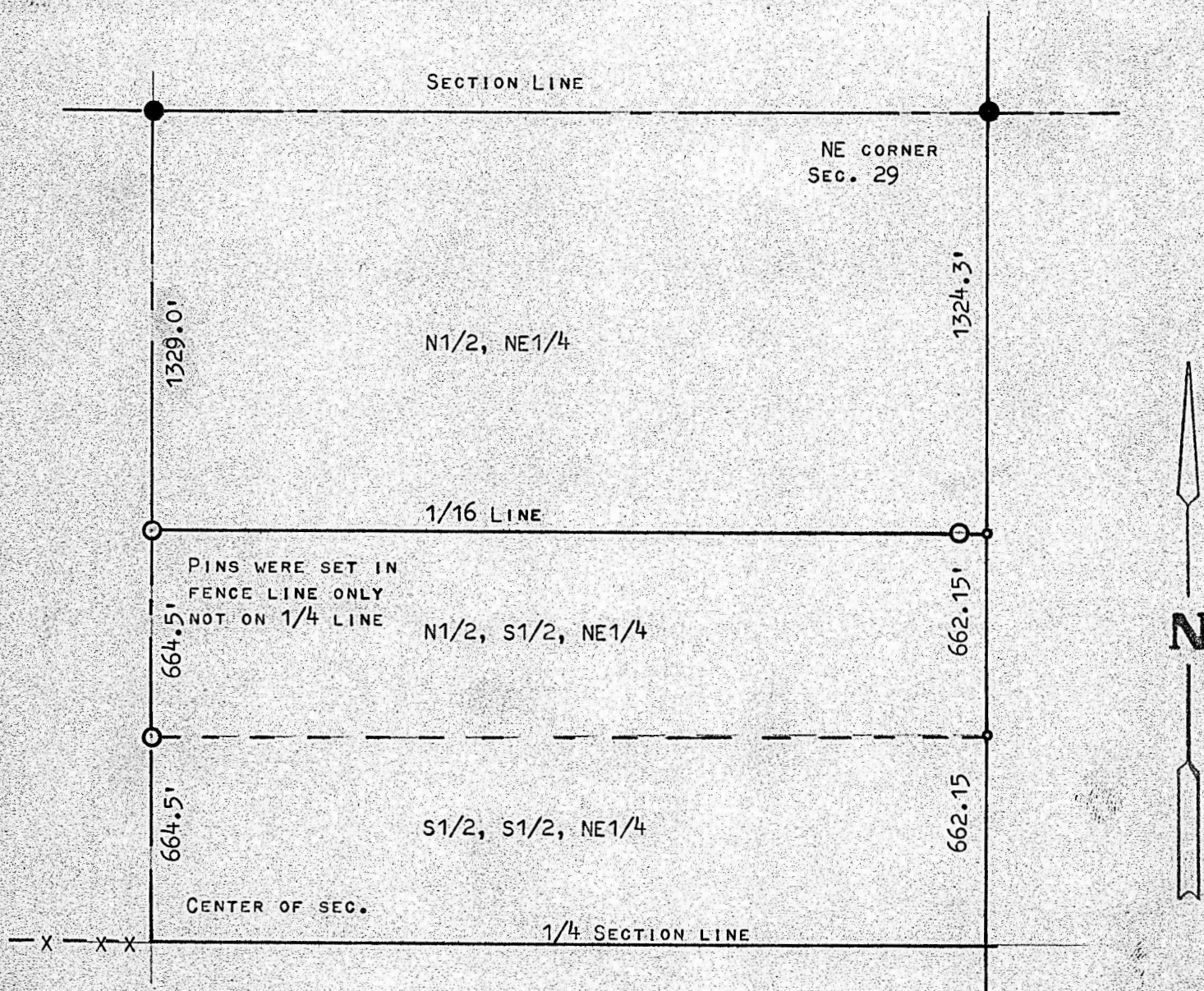


A SURVEY IN THE NE 1/4, SECTION 29
T21S R3W MCPHERSON COUNTY, KANSAS



● PINS FOUND THIS SURVEY

○ PINS SET THIS SURVEY

STATE OF KANSAS)
COUNTY OF MCPHERSON) SS

I, FRANCIS RANKIN, PROFESSIONAL ENGINEER OF THE STATE OF KANSAS, DO HEREBY CERTIFY THAT UNDER MY SUPERVISION A SURVEY WAS MADE TO DETERMINE THE 1/16 LINE BETWEEN THE N1/2, NE1/4, AND THE S1/2, NE1/4, SECTION 29, T21S R3W OF THE 6TH P.M. AND THAT THE ACCOMPANYING PLAT IS A TRUE EXHIBIT OF SAID SURVEY AS FAR AS IT IS KNOWN TO ME.

SURVEY CALLED FOR BY ELMER VOTH

SIGNED THIS 14 DAY OF SEPTEMBER, 1970

Francis Rankin
FRANCIS RANKIN
PROFESSIONAL ENGINEER
MCPHERSON, KANSAS



MICROFILM