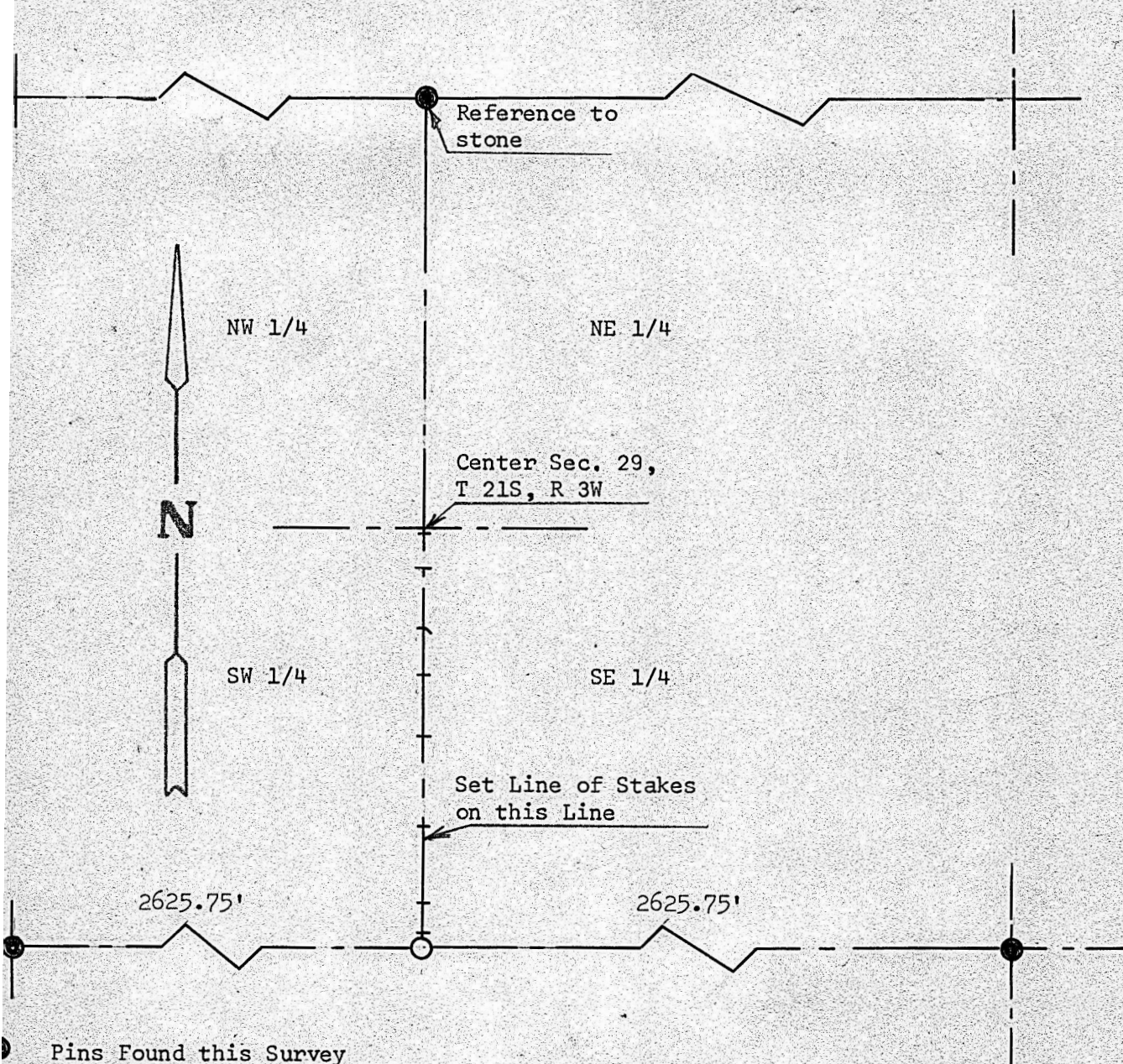


SURVEY BETWEEN THE SW 1/4 & SE 1/4
SECTION 29, T 21S, R 3W
MC PHERSON COUNTY, KANSAS



Pins Found this Survey

Pins Set this Survey

State of Kansas)
County of McPherson) SS

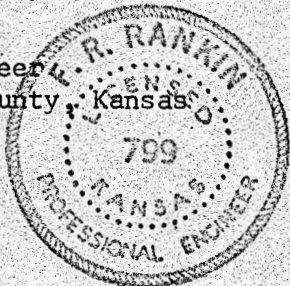
I, F. R. Rankin, County Engineer of McPherson County, Kansas, do hereby certify that under my supervision a survey was made to determine the 1/4 section line between the SW 1/4 & SE 1/4 of Section 29, T 21S, R 3W of the 6th P.M. and that the accompanying plat is a true exhibit of said survey as far as it is known to me.

Survey called for by Milo Schroeder

Signed this 20 day of October, 1967

F. R. Rankin

F. R. Rankin
County Engineer
McPherson County, Kansas



OFFICE